

An ageing society

Population 1 January

	Population	Annual growth. Per cent
1950	3 250 000	
1960	3 568 000	0.94
1970	3 863 000	0.80
1980	4 079 000	0.55
1990	4 233 000	0.37
2000	4 478 000	0.56
2008	4 737 000	0.71
<i>Projections</i>		
2010	4 851 000	1.2
2020	5 382 000	1.0
2030	5 848 000	0.8
2040	6 221 000	0.6
2050	6 553 000	0.5

High population growth...

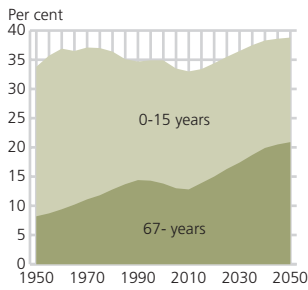
The population of Norway exceeded 4.8 million in 2008; an increase of more than 1.5 million since 1950. In the immediate post-war years, the annual growth in the population was approximately 1 per cent, mainly due to the high birth rate. The population growth dropped to 0.3 per cent in the 1980s and has increased slightly since then. Today, net immigration is more important for population growth than the surplus of births.

...also in the years ahead

Population projections will depend on the assumptions we make. A prognosis based on medium fertility, life expectancy, centralisation and net immigration, indicates continued growth over the next 50 years. The population will exceed 5 million in 2012 and climb to 6.5 million in 2050, while population growth will approach 0.5 per cent.

Much of the future growth will probably be due to net immigration. If this is low, Norway's population will reach a maximum of approximately 6 million around 2050, while higher immigration can take the population figure up to almost 8 million.

Percentage of children/young people and elderly in the population



The grey tsunami

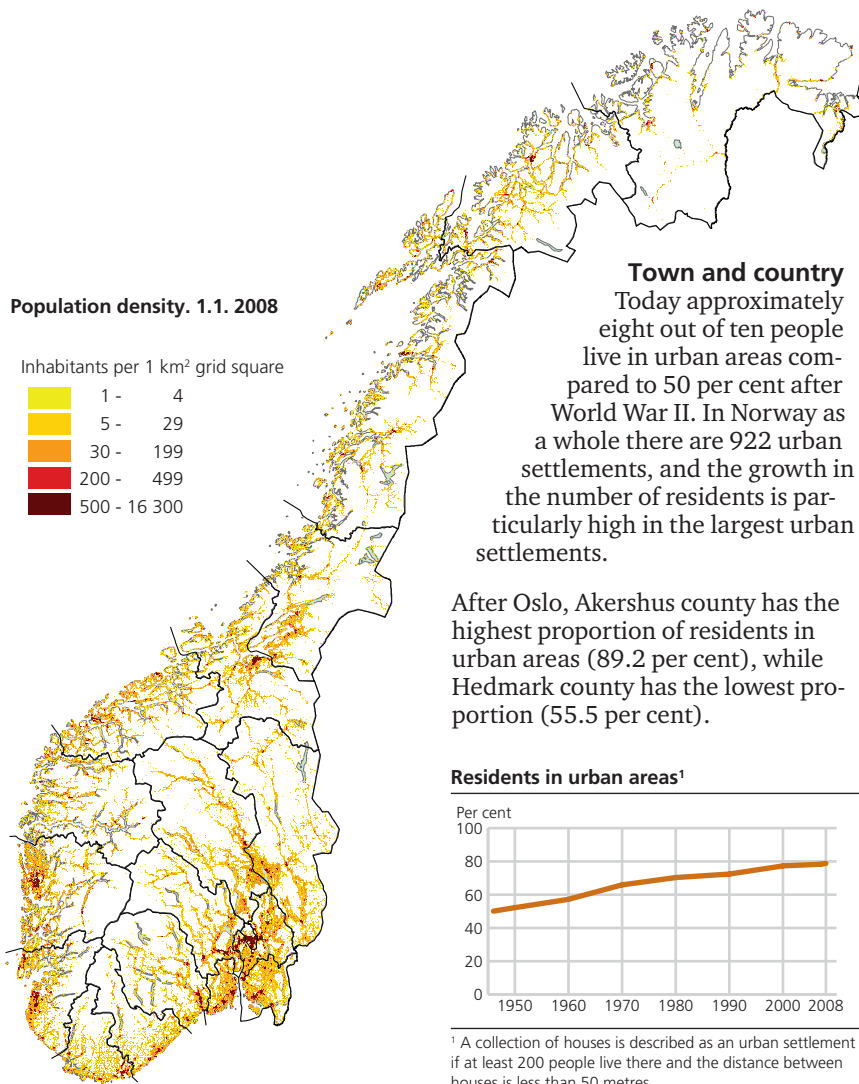
Much has been said about the expected growth in the elderly population. However, this is like a day at the beach, keeping a lookout for the big wave; we think we see one coming but usually it flattens out long before it reaches us.

However the grey tsunami will happen, and in some respects we could say that it has arrived already. In 1950 only 8 per cent of the population were aged 67 or over, while today the share is 13 per cent. Not until 2015 (when the post-war baby boomers become pensioners) will this proportion increase further, reaching 17 per cent in 2030 and 21 per cent in 2050. The share of children below the age of 15 will continue to fall and will be approximately 18 per cent in 2050.

This senior citizen boom is only partly due to the fact that the population is growing older (more people at the top of the pyramid). Equally important is the low birth rate resulting in fewer people at the bottom. On the other hand, the share of elderly people has been offset by the relatively high fertility rate in Norway and also by the fact that the immigrant population is young.

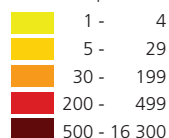
Population by age and sex, registered and projections





Population density. 1.1. 2008

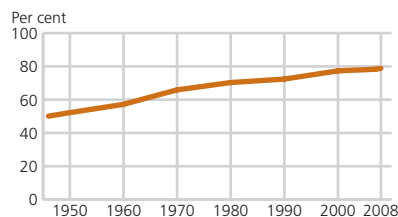
Inhabitants per 1 km² grid square



Town and country
 Today approximately eight out of ten people live in urban areas compared to 50 per cent after World War II. In Norway as a whole there are 922 urban settlements, and the growth in the number of residents is particularly high in the largest urban settlements.

After Oslo, Akershus county has the highest proportion of residents in urban areas (89.2 per cent), while Hedmark county has the lowest proportion (55.5 per cent).

Residents in urban areas¹



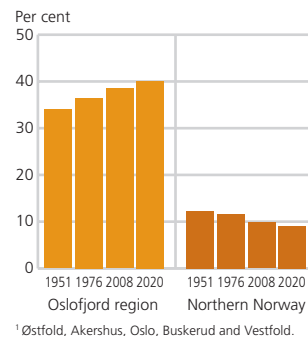
¹ A collection of houses is described as an urban settlement if at least 200 people live there and the distance between houses is less than 50 metres.

From far and near

At the start of 2008, there were 460 000 immigrants and Norwegian-born to immigrant parents in Norway, which accounted for 9.7 per cent of the entire population. A total of 381 000 of these were immigrants born outside Norway, while 79 000 were Norwegian-born with immigrant parents.

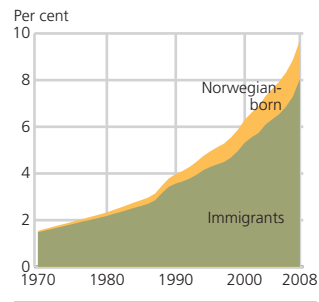
In Oslo, 25 per cent of the population are either immigrants or born in Norway to immigrant parents, and a third of immigrants and Norwegian-born to immigrant parents in Norway live in Oslo. Including Akershus, the figure is 43 per cent.

Residents in the Oslofjord region¹ and Northern Norway. 1951-2008 and projections 2020



¹ Østfold, Akershus, Oslo, Buskerud and Vestfold.

Immigrants and Norwegian-born to immigrant parents as a proportion of the total population



Country of origin of immigrants and Norwegian-born to immigrant parents. Main countries. 2008

Country	Number
Poland	32 069
Pakistan	29 134
Sweden	26 244
Iraq	22 881
Somalia	21 795
Vietnam	19 226
Denmark	19 220
Germany	17 472
Bosnia-Herzegovina	15 649
Iran	15 134