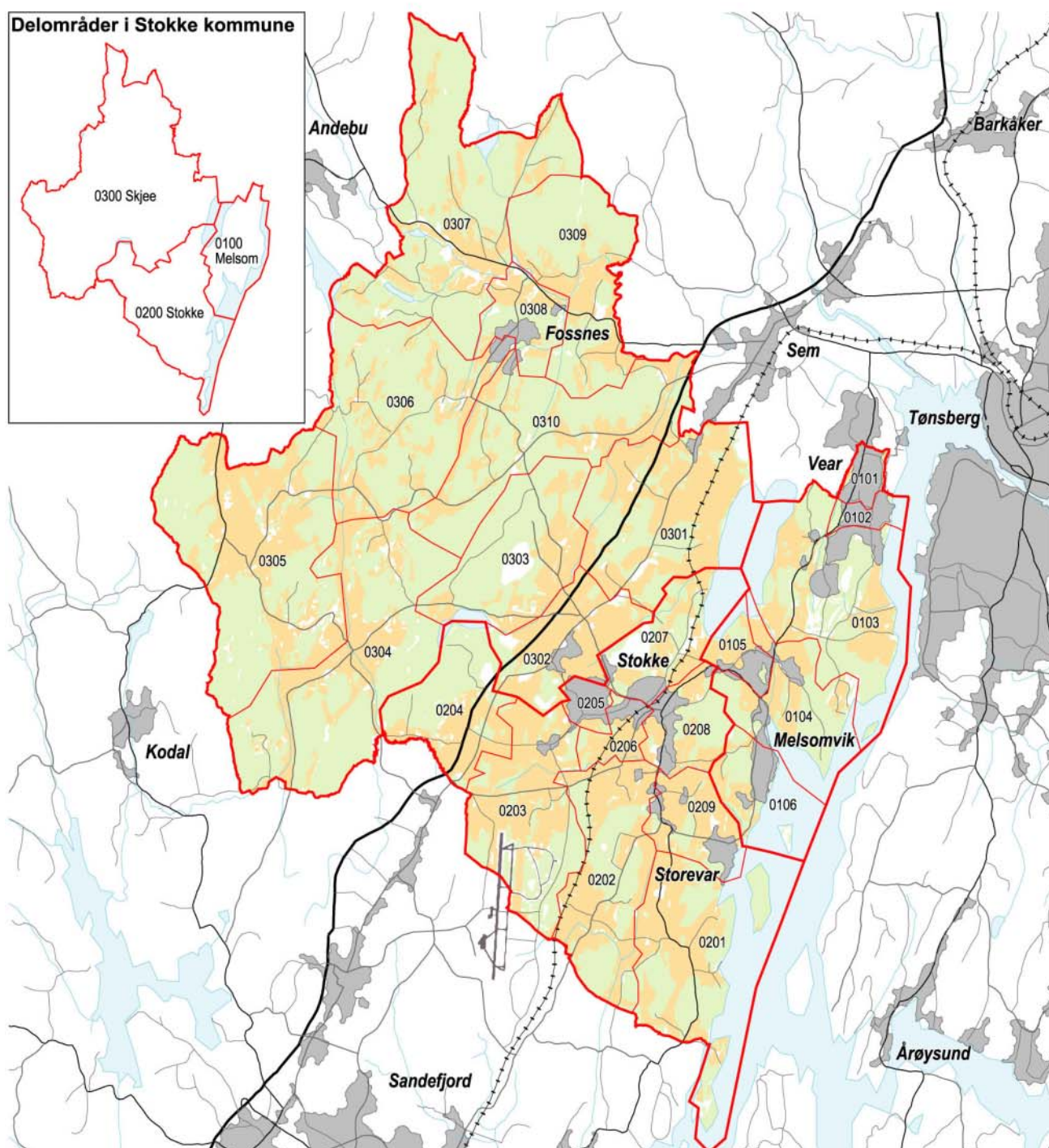










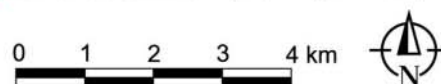


0720 Stokke kommune – grunnkretser, delområder og tettsteder

Kartet viser grunnkretser, delområder og tettsteder. Grunnkrets- og delområdenummeret er vist med de fire siste sifrene. Grunnkrets- og delområdegrensene er à jour per 3. november 2001 og tettstedsgrensene per 1. januar 2002.



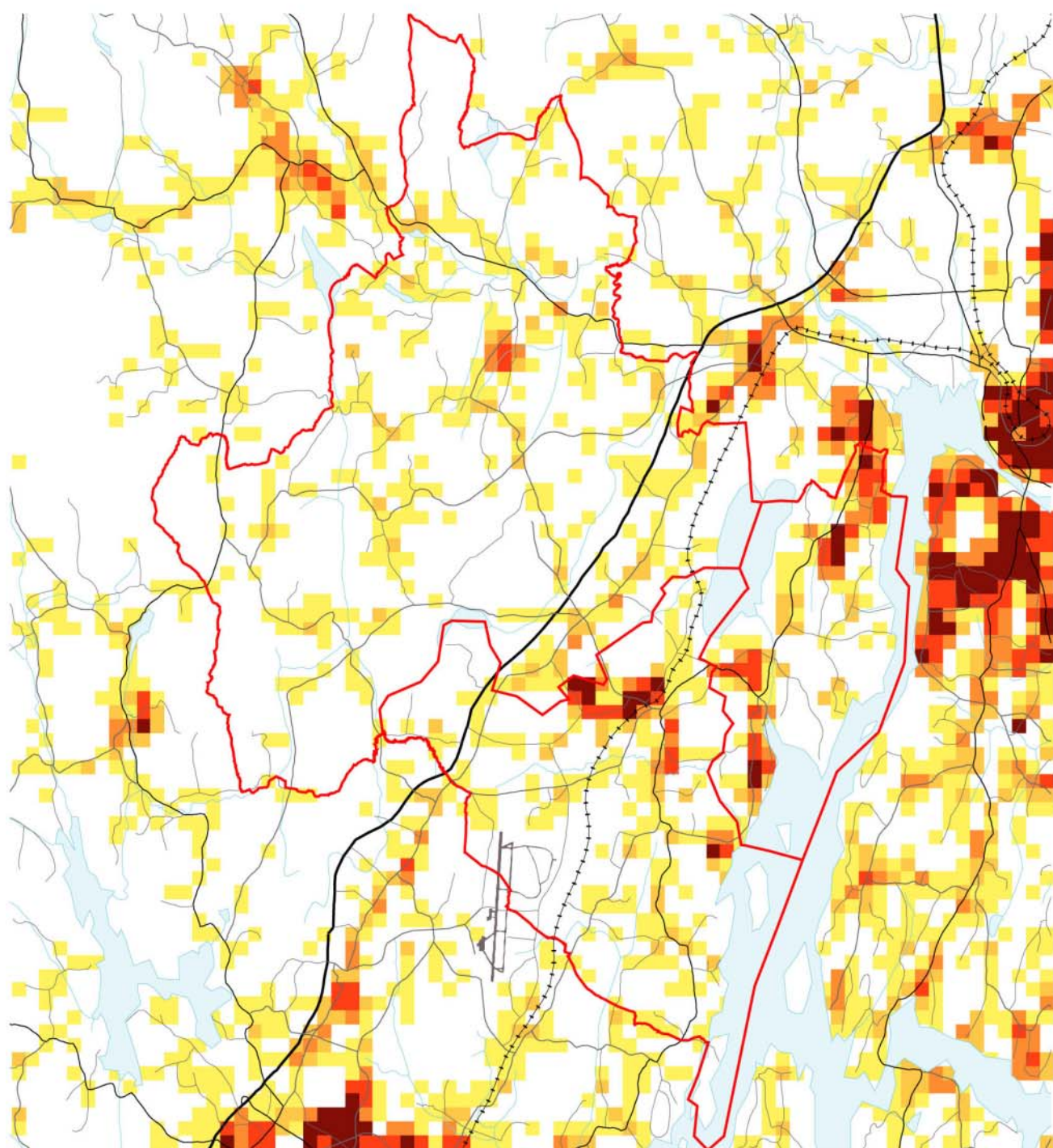
- | | | | |
|-------------------------------------------------------------------------------------|------------------------|-------------------------------------------------------------------------------------|------------------------|
|  | Delområde |  | Europavei |
|  | Grunnkrets, med nummer |  | Riksvei |
|  | Tettsted, med navn |  | Fylkesvei |
|  | Dyrka mark |  | Kommunal og privat vei |
|  | Skog |  | Jernbane |



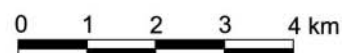
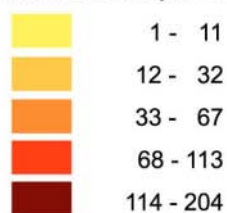
Datakilde: Folke- og boligting 2001
Kartgrunnlag: SSB og Statens kartverk

0720 Stokke kommune – bosettingsmønster

Antall bosatte per rute 250 m x 250 m. Ikke fargelagte ruter/områder er uten bosetting. Befolkningsdata per 1. januar 2002.



Antall bosatte per 250m-rute



Datakilde: Folke- og bolig telling 2001
Kartgrunnlag: SSB og Statens kartverk

Folkemengde, etter kjønn og alder. Hele landet og kommunen. 3. november 2001. Prosent

