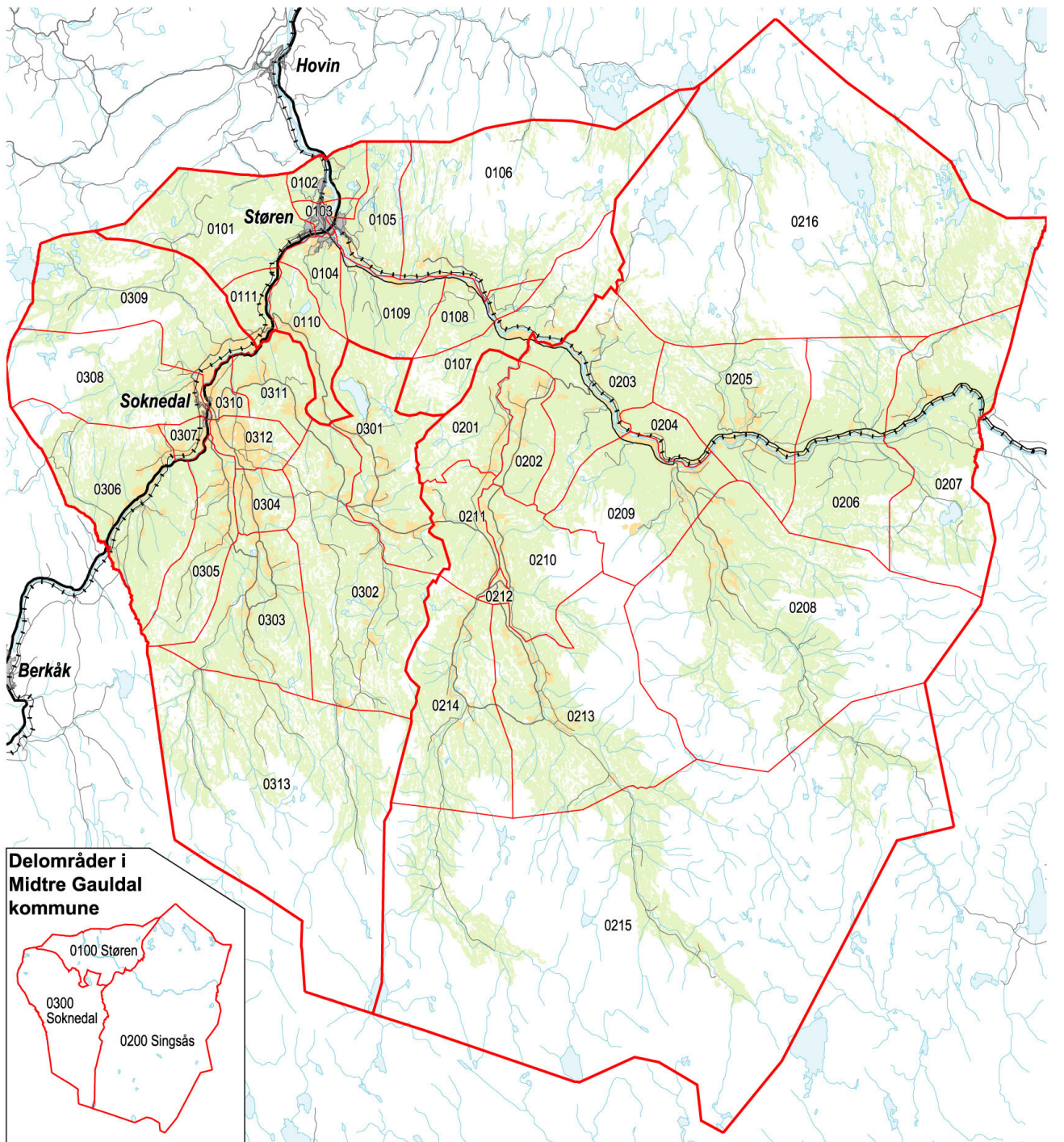
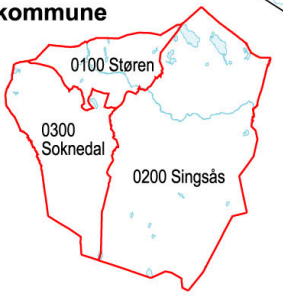











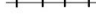
## 1648 Midtre Gauldal kommune – grunnkretser, delområder og tettsteder

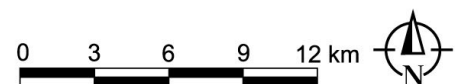
Kartet viser grunnkretser, delområder og tettsteder. Grunnkrets- og delområdenummeret er vist med de fire siste sifrene. Grunnkrets- og delområdegrensene er à jour per 3. november 2001 og tettstedsgrensene per 1. januar 2002.



### Delområder i Midtre Gauldal kommune



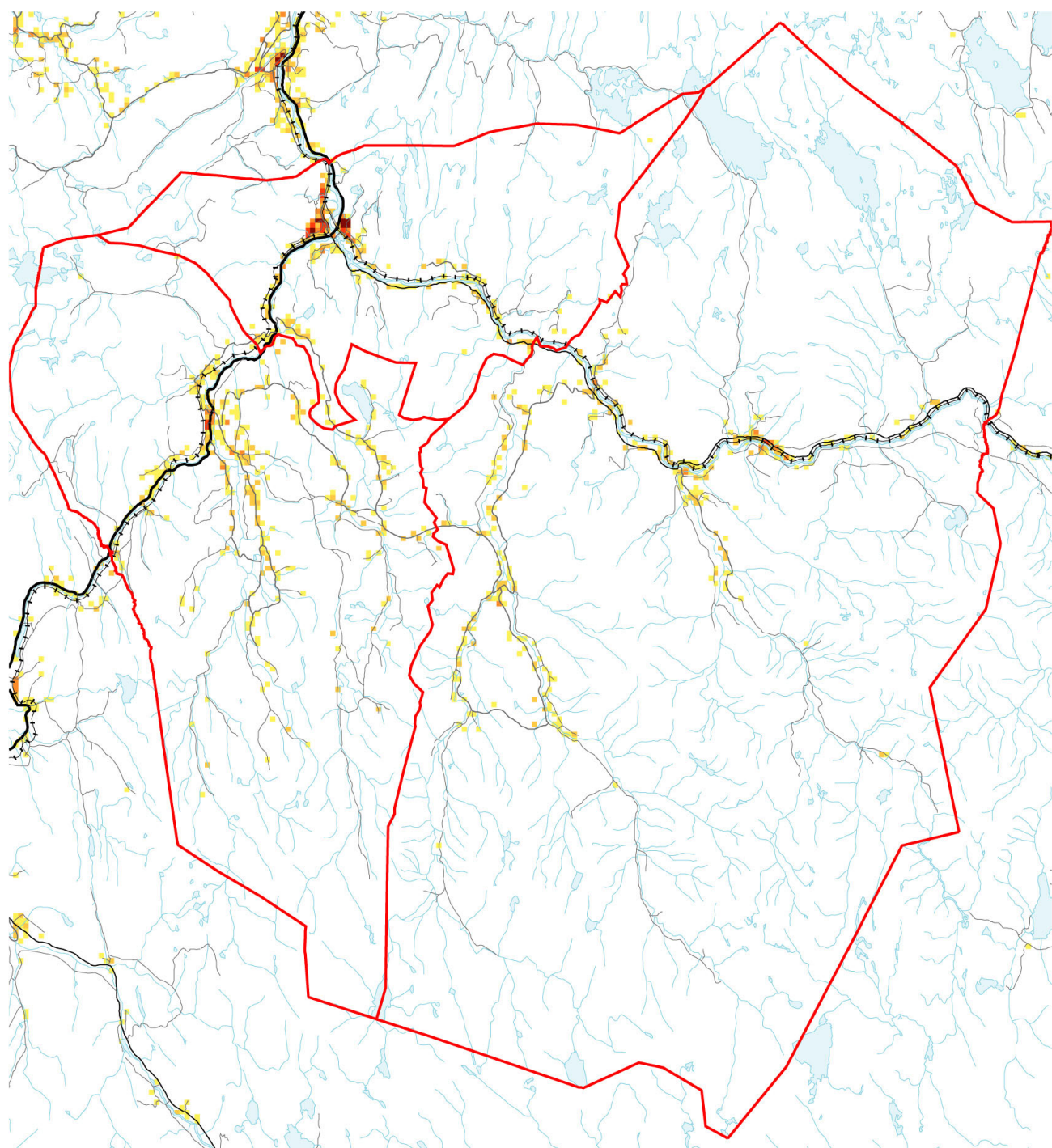
	Delområde		Europavei
	Grunnkrets, med nummer		Riksvei
	Tettsted, med navn		Fylkesvei
	Dyrka mark		Kommunal og privat vei
	Skog		Jernbane



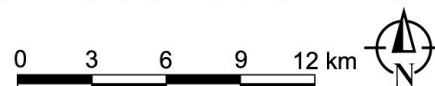
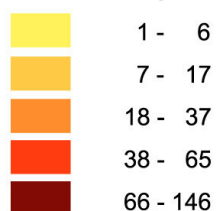
Datakilde: Folke- og boligting 2001  
Kartgrunnlag: SSB og Statens kartverk

## 1648 Midtre Gauldal kommune – bosettingsmønster

Antall bosatte per rute 250 m x 250 m. Ikke fargelagte ruter/områder er uten bosetting. Befolkningsdata per 1. januar 2002.



### Antall bosatte per 250m-rute



Datakilde: Folke- og bolig telling 2001  
Kartgrunnlag: SSB og Statens kartverk

## Folkemengde, etter kjønn og alder. Hele landet og kommunen. 3. november 2001. Prosent

