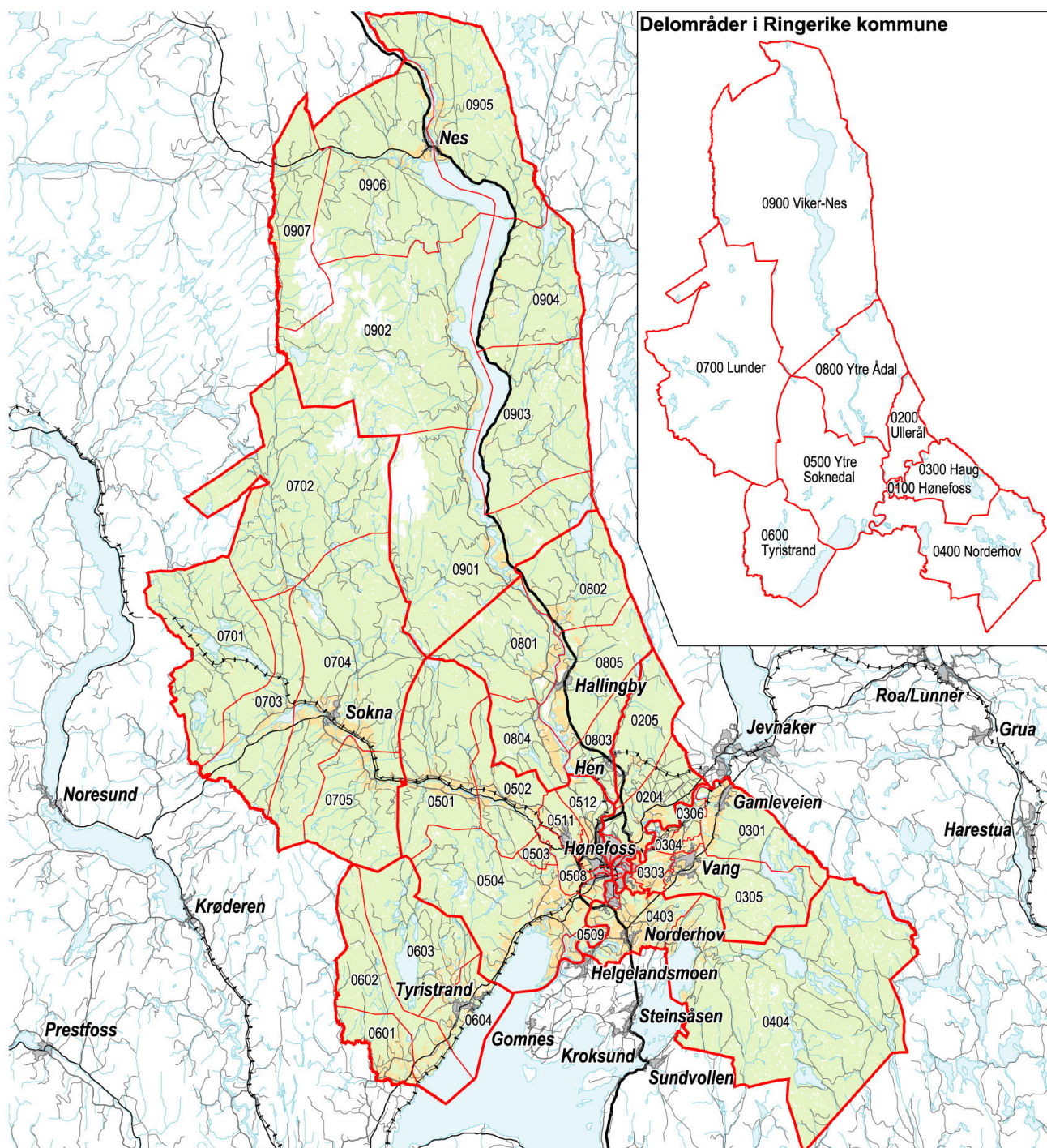










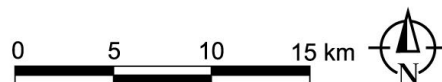


## 0605 Ringerike kommune – grunnkretser, delområder og tettsteder

Kartet viser grunnkretser, delområder og tettsteder. Grunnkrets- og delområdenummeret er vist med de fire siste sifrene. Flere detaljer for utvalgte grunnkretser er vist på eget kart. Grunnkrets- og delområdegrensene er à jour per 3. november 2001 og tettstedsgrensene per 1. januar 2002.



- |   |                        |   |                        |
|---|------------------------|---|------------------------|
|  | Delområde              |  | Europavei              |
|  | Grunnkrets, med nummer |  | Riksvei                |
|  | Tettsted, med navn     |  | Fylkesvei              |
|  | Dyrka mark             |  | Kommunal og privat vei |
|  | Skog                   |  | Jernbane               |



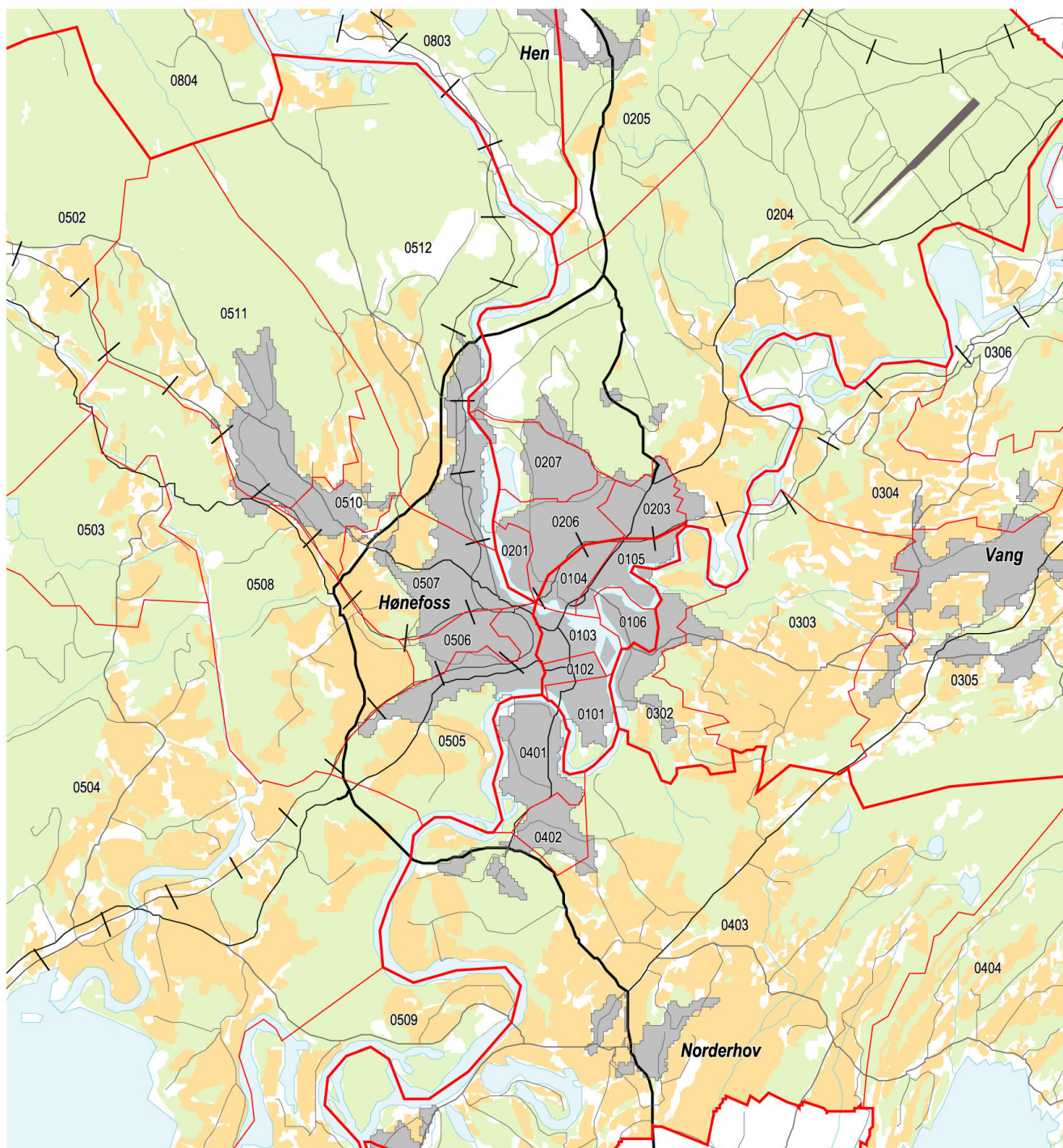
Datakilde: Folke- og bolig telling 2001  
Kartgrunnlag: SSB og Statens kartverk













## 0605 Ringerike kommune – grunnkretser og tettsteder – flere detaljer

Kartet viser flere detaljer for noen grunnkretser og tettsteder i deler av kommunen.

Grunnkrets- og delområdegrensene er à jour per 3. november 2001 og tettstedsgrensene per 1. januar 2002.



	Delområde		Europavei
	Grunnkrets, med nummer		Riksvei
	Tettsted, med navn		Fylkesvei
	Dyrka mark		Kommunal og privat vei
	Skog		Jernbane

0 1 2 km



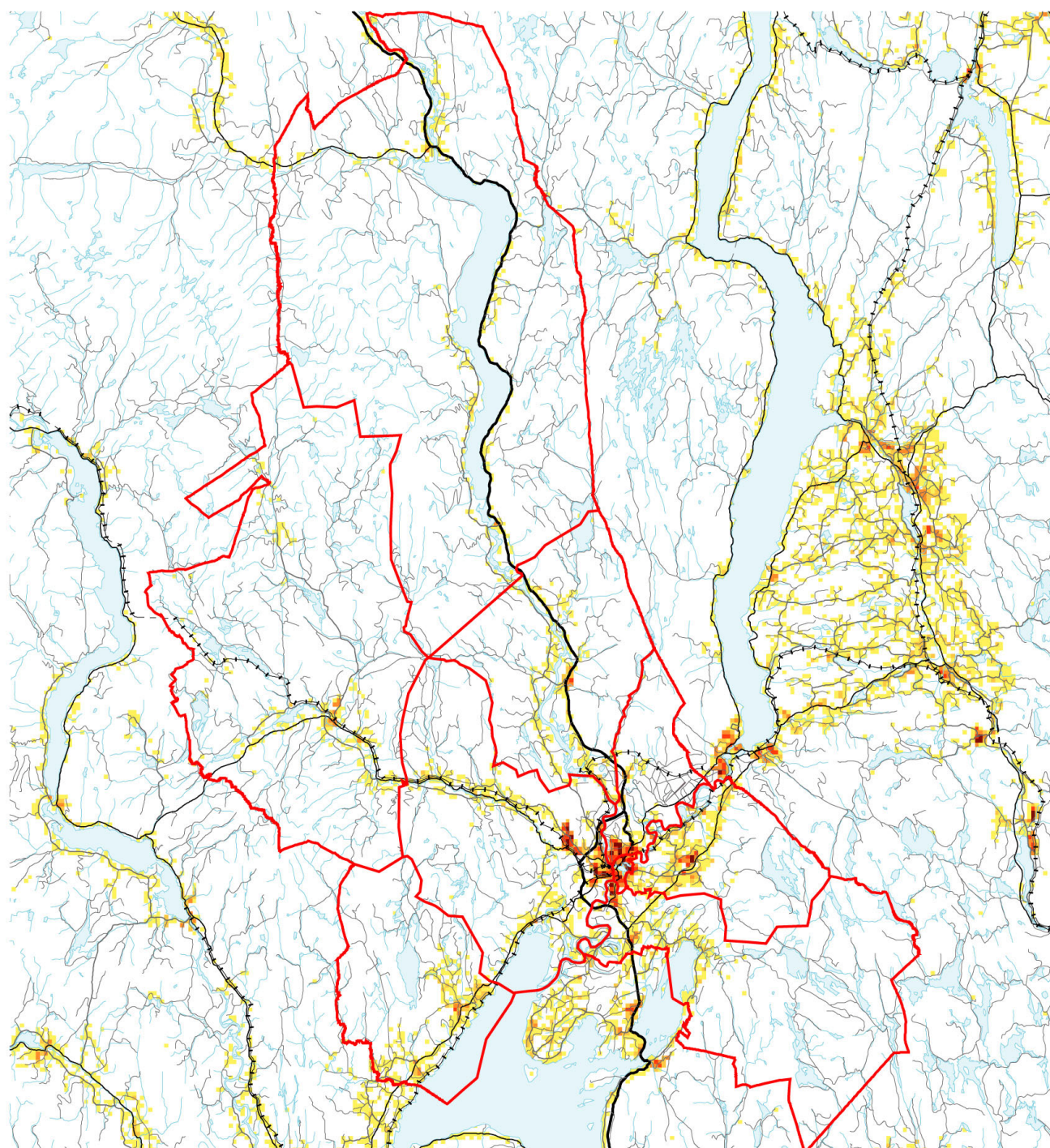
Datakilde: Folke- og bolig telling 2001  
Kartgrunnlag: SSB og Statens kartverk



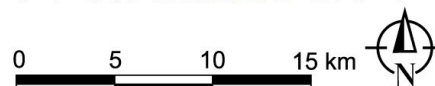
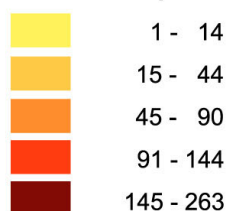
**Statistisk sentralbyrå**  
Statistics Norway

## 0605 Ringerike kommune – bosettingsmønster

Antall bosatte per rute 250 m x 250 m. Ikke fargelagte ruter/områder er uten bosetting. Befolkningsdata per 1. januar 2002.



### Antall bosatte per 250m-rute



Datakilde: Folke- og boligting 2001  
Kartgrunnlag: SSB og Statens kartverk

Folkemengde, etter kjønn og alder. Hele landet og kommunen. 3. november 2001. Prosent

