

## **Manufacturing Statistics 2007**

This series consists mainly of primary statistics, statistics from statistical accounting systems and results of special censuses and surveys, for reference and documentation purposes. Presentation is basically in the form of tables, figures and necessary information about data, collection and processing methods, and concepts and definitions. In addition, a short overview of the main results is given. The series also includes Statistical Yearbook of Norway

<p>© Statistics Norway, February 2010 When using material from this publication, Statistics Norway shall be quoted as the source.</p> <p>ISBN 978-82-537-7761-0 Printed version ISBN 978-82-537-7762-7 Electronic version Subject: 10.7</p> <p>Print: Statistics Norway</p>	<table border="1"> <thead> <tr> <th data-bbox="986 1796 1388 1825"><b>Symbols in tables</b></th> <th data-bbox="1388 1796 1495 1825"><b>Symbol</b></th> </tr> </thead> <tbody> <tr> <td data-bbox="986 1825 1388 1854">Category not applicable</td> <td data-bbox="1388 1825 1495 1854">.</td> </tr> <tr> <td data-bbox="986 1854 1388 1883">Data not available</td> <td data-bbox="1388 1854 1495 1883">..</td> </tr> <tr> <td data-bbox="986 1883 1388 1912">Data not yet available</td> <td data-bbox="1388 1883 1495 1912">...</td> </tr> <tr> <td data-bbox="986 1912 1388 1942">Not for publication</td> <td data-bbox="1388 1912 1495 1942">:</td> </tr> <tr> <td data-bbox="986 1942 1388 1971">Nil</td> <td data-bbox="1388 1942 1495 1971">-</td> </tr> <tr> <td data-bbox="986 1971 1388 2000">Less than 0.5 of unit employed</td> <td data-bbox="1388 1971 1495 2000">0</td> </tr> <tr> <td data-bbox="986 2000 1388 2029">Less than 0.05 of unit employed</td> <td data-bbox="1388 2000 1495 2029">0.0</td> </tr> <tr> <td data-bbox="986 2029 1388 2058">Provisional or preliminary figure</td> <td data-bbox="1388 2029 1495 2058">*</td> </tr> <tr> <td data-bbox="986 2058 1388 2087">Break in the homogeneity of a vertical series</td> <td data-bbox="1388 2058 1495 2087">—</td> </tr> <tr> <td data-bbox="986 2087 1388 2116">Break in the homogeneity of a horizontal series</td> <td data-bbox="1388 2087 1495 2116"> </td> </tr> <tr> <td data-bbox="986 2116 1388 2141">Decimal punctuation mark</td> <td data-bbox="1388 2116 1495 2141">.</td> </tr> </tbody> </table>	<b>Symbols in tables</b>	<b>Symbol</b>	Category not applicable	.	Data not available	..	Data not yet available	...	Not for publication	:	Nil	-	Less than 0.5 of unit employed	0	Less than 0.05 of unit employed	0.0	Provisional or preliminary figure	*	Break in the homogeneity of a vertical series	—	Break in the homogeneity of a horizontal series		Decimal punctuation mark	.
<b>Symbols in tables</b>	<b>Symbol</b>																								
Category not applicable	.																								
Data not available	..																								
Data not yet available	...																								
Not for publication	:																								
Nil	-																								
Less than 0.5 of unit employed	0																								
Less than 0.05 of unit employed	0.0																								
Provisional or preliminary figure	*																								
Break in the homogeneity of a vertical series	—																								
Break in the homogeneity of a horizontal series																									
Decimal punctuation mark	.																								

## Preface

The publication contains annual statistics for enterprises in mining, quarrying and manufacturing, and information about statistical production and definitions of important concepts and variables. The statistics include information about number of local kind-of-activity units (local KAUs), employment, production value, value added, compensation of employees and investment figures classified by industry division, employment group and county.

The annual manufacturing statistics offer first and foremost detailed structural figures for manufacturing. This requires a long time of collection as well as preparation. In addition to annual manufacturing statistics Statistics Norway produce numeral monthly and quarterly statistics (monthly production index and turnover figures, quarterly investments, orders and stocks figures and business tendency surveys), which all are published for the first time in the Today's Statistics with the most current figures.

Principal figures are published Statistics Norway's webpage, [www.ssb.no/english](http://www.ssb.no/english).

NOS Manufacturing Statistics 2007 is also available on Internet.

This publication has been prepared by Senior Executive Officer Julie Margrethe Slensvik, with contributions from advisor Geir Soland and advisor Nils Petter Skirstad. Head of Division is Lise Dalen McMahon.

Statistics Norway  
Oslo/Kongsvinger, 18 December 2009

Øystein Olsen

---

Nils Håvard Lund

## Contents

<b>1.</b>	<b>Background and purpose</b> .....	<b>6</b>
<b>2.</b>	<b>Statistics production</b> .....	<b>6</b>
2.1.	Coverage.....	6
2.2.	Sampling.....	6
2.3.	Data sources.....	6
2.4.	Collection of data.....	7
2.5.	Response burden.....	7
2.6.	Control and revision.....	7
2.7.	Estimations.....	7
<b>3.</b>	<b>Concepts, variables and classification</b> .....	<b>8</b>
3.1.	Definition of the main concepts.....	8
3.2.	Definition of the main variables.....	8
3.3.	Standard classifications.....	13
<b>4.</b>	<b>Sources of error and uncertainty</b> .....	<b>13</b>
<b>5.</b>	<b>Comparability and coherence</b> .....	<b>13</b>
5.1.	Spatial comparability and comparability over time.....	13
5.2.	Coherence.....	14
<b>6.</b>	<b>Availability</b> .....	<b>14</b>
6.1.	Internet address.....	14
6.2.	Language (bokmål/nynorsk, English).....	14
6.3.	Publications.....	14
6.4.	Storing and use of basic material.....	14
6.5.	Other documentation.....	15
<b>7.</b>	<b>Main results</b> .....	<b>15</b>
7.1.	Employment.....	15
7.2.	Production and value added.....	17
7.3.	Income and expenditures.....	18
7.4.	Gross investment.....	19
	<b>Appendice A</b> .....	<b>53</b>

## List of figures

1.	Employment in mining, quarrying and manufacturing. 1998-2007 .....	15
2.	Number of persons employed by local KAU-size. Mining, quarrying and manufacturing. 1998. 2001, 2004 and 2007 .....	16
3.	Number of persons employed by county. Mining, quarrying and manufacturing. 1998 and 2007 .....	17
4.	Value added per person employed by industry. Mining, quarrying and manufacturing. 1998 and 2007 .....	17
5.	Income. Mining, quarrying and manufacturing. 2007 .....	18
6.	Expenditures. Mining, quarrying and manufacturing. 2007 .....	18

## List of tables

1.	Principal figures for all kind-of-activity units (KAUs) in mining, quarrying and manufacturing. 1972 - 2007 .....	20
2.	Persons employed in local KAUs, by industry division. 1998 - 2007 .....	21
3.	Principal figures for local KAUs by industry division. 1998-2007 .....	22
4.	Principal figures per employee for all kind-of-activity units (KAUs) in mining, quarrying and manufacturing. 1998 - 2007 .....	30
5.	Principal figures for local KAUs by industry subclass. 2007 .....	37
6.	Persons employed in local KAUs in mining, quarrying and manufacturing by county. 1998 - 2007 .....	45
7.	Principal figures for local KAUs in mining, quarrying and manufacturing by county. 2007 .....	45
8.	Persons employed by county and industry branch. 2007 .....	46
9.	Value added for local KAUs in mining, quarrying and manufacturing by county. 1998-2007 .....	48
10.	Income and expenditure in local KAUs in mining, quarrying and manufacturing, by employment group. NOK Million. 2007 .....	49
11.	Income and expenditure in local KAUs in mining, quarrying and manufacturing. NOK Million. 1999-2007 .....	49
12.	Income and expenditure for local KAUs in mining, quarrying and manufacturing by industry subclass. NOK Million. 2007 .....	50
13.	Number of persons employed and local KAUs by employment group. 1998-2007 .....	52

## 1. Background and purpose

The manufacturing sector is one of the most important production sectors in the economy. For that reason there is a great need for versatile and detailed manufacturing statistics. Politicians, leaders of private and public enterprises, project managers and professional and industrial organisations use structural statistics for manufacturing for their work. A reliable general view of the composition of and the development trends in Norwegian manufacturing is very important in the economic and political debate.

Manufacturing statistics offer a detailed overview on employment, production value, production costs, value added and investments by industry and regions. The statistics are published annually as Today's Statistics and in the series Norwegian Official Statistics (Manufacturing Statistics). In recent years, public authorities as well as private users have expressed a greater need for special excerpts from the statistics.

Manufacturing statistics also comprise one of the basic foundations for the annual national accounts. The national accounts system is among other things aiming at mapping out the dependency that exists between the different areas of the economy. National accounts also make up the data foundation for macro-economic planning models. These models are important tools to calculate future development of the economy, and therefore have a central position in the Ministry of Finance's work with the national budget.

Norwegian manufacturing statistics are coordinated with corresponding statistics from the EEA, and in accordance with the EEA agreement aggregated data are reported to Eurostat, the EU's Statistical Office.

## 2. Statistics production

### 2.1. Coverage

*Local kind-of-activity units  
(Local KAUs)*

The annual manufacturing statistics cover local KAUs in manufacturing, mining and quarrying, as defined by the Norwegian Standard Industrial Classification (SIC). Information on oil and gas extraction is not included.

*Enterprises*

The enterprise population has the local KAU population as a starting point and includes all enterprises (see definition under 3.1) with main industry in manufacturing, mining and quarrying.

### 2.2. Sampling

The statistical population consists of all active enterprises in the reference year. The population is divided into strata (non-overlapping, exhaustive groups) by industry divisions and employment. For some strata all enterprises are required to turn in information whereas for other strata a representative sample is drawn. These enterprises together comprise the sample that are asked to report a full set of information, i.e. the Standard Industry Forms (SIFs) and a supplementary questionnaire.

### 2.3. Data sources

The SIFs are either attached to the supplementary questionnaires or submitted electronically via the Directorate of Taxes. Information about the units that are not included in the sample is found in the following sources:

- Electronically delivered SIFs to the Directorate of Taxes
- The Register of Company Accounts in Brønnøysund
- The VAT Register

- The Register of Employees and Employers

This detailed survey of accounting data is combined with the additional information from the various registers and the structural survey of Statistics Norway to form a basis for estimating the financial structures of the different industries, i.e. population totals.

## 2.4. Collection of data

The supplementary forms are collected via the Internet or by postal questionnaires. The questionnaires are sent out in April/May after the end of the reference year, with a response deadline of four to five weeks. Enterprises failing to respond to the initial inquiry are sent written follow-up letters for up to six months from the first deadline. Enterprises that do not respond are fined.

For enterprises not included in the sample turnover figures and other essential accounting data are obtained from the SIFs submitted electronically via the Directorate of Taxes or from annual accounts in the Register of Company Reports in Brønnøysund. Turnover figures are also obtained from enterprises in the VAT Register.

In this way we obtain information on all enterprises in the population.

## 2.5. Response burden

An inquiry carried out in 2004 showed that information gathering and completing the questionnaire takes on average 175 minutes (sums weighed for the proportion of one KAU- and multi KAU-businesses). The results can be found in the Eurostat publication *Developing methods for assessing perceived response burden*<sup>1</sup>.

## 2.6. Control and revision

The data collected are sent through a thorough revision on micro level. Consistency controls are conducted between enterprise figures and the SIF. Controls are carried out to check for large deviations between the manufacturing structural statistics and the manufacturing commodity figures, and between the manufacturing structural statistics and industrial energy use statistics. Investment figures are controlled against the quarterly investment statistics. Figures are also checked towards the short term statistics for manufacturing.

## 2.7. Estimations

In 2007 the population consisted of 20 650 local KAUs classified in manufacturing, mining and quarrying. Tables are based on data from these locals KAUs.

	Number of local KAUs	Production value in NOK bill.	Employment
Population .....	20 650	797.3	275 944
Sample .....	4 167	696.4	216 599
Small local KAUs .....	16 483	100.9	59 345

The local KAUs in the population from which Statistics Norway has collected data, make up the net sample and came to 4 167 in 2007. These local KAUs made up 87.3 per cent of total production value and 78.5 per cent of total employment in manufacturing, mining and quarrying.

<sup>1</sup><http://epp.eurostat.ec.europa.eu/portal/page/portal/quality/documents/DEVELOPING%20METHOD%20FOR%20ASSESSING%20PERCEIVED%20RESPONSE%20BURD.pdf>

16 483 local KAUs were so-called small local KAUs. These units do not receive questionnaires, as they employed less than ten at the time the selection was made. The small local KAUs made up about 21.5 per cent of the employment in manufacturing, mining and quarrying in 2007, and 12.7 per cent of the production value.

The figure for production value for the small local KAUs is like other data from this group an estimated figure. The estimation methods are mainly based on estimations with basis in the variables available from other sources, inter alia the VAT Register and Company Accounts.

### 3. Concepts, variables and classification

#### 3.1. Definition of the main concepts

A **local kind-of-activity unit** (Local KAUs) is defined as a functional unit which at a single physical location is engaged mainly in activities within a specific activity group. This definition conforms to the one framed by ISIC Rev. 3 and the NACE Rev. 1.1.

An **enterprise** is defined as an organisational unit comprising all economic activities engaged in by one and the same owner. Hence an enterprise is a legal entity covering one or more productive units (local KAUs). An enterprise is the smallest organisational unit required to keep accounts.

The following guidelines are used in order to divide the activity of an enterprise into separate local KAUs:

- Activities engaged in by an enterprise in different municipalities are treated as separate local KAUs.
- Activities in different industry classes (4-digit) can be classified as separate local KAUs when necessary for statistical purposes, even if the activity is located at the same site. To divide a local unit into several local KAUs each of the activities has to be of a certain size, normally engaging at least 5 persons. Some exceptions have been made to this rule, dependent on the feasibility of this on the hands of the respondents.

**Auxiliary units** are locally distinct units which mainly provide services for one or more local KAUs in the enterprise of which the unit is a part. Typical examples are central and local administrative offices, sales offices, stock departments etc. These units furnish separate reports, but they are not regarded as separate local KAUs. Auxiliary units furnish reports on persons employed, compensation of employees, working expenses, investments, etc.. An auxiliary unit is grouped under the same industry as the local KAUs within the enterprise or groups of companies to which the unit mainly render its services. If the unit serves various local KAUs of different industry groups, more auxiliary units may be organised within a locally limited area. The value of the services from such auxiliary units (the value of production) is set equal to compensation of employees and cost of goods and services consumed. These services are entered as cost of goods and services consumed by the receiver (internal delivery). The statistics for 2007 contain information on 600 auxiliary units, with a total of 12 726 persons employed.

#### 3.2. Definition of the main variables

Characteristics or variables are collected from enterprises using forms or annual accounts. The forms are adjusted to the local KAUs' connection with enterprises and sizes. One of the main goals of manufacturing statistics is to distribute structural data as value added, employment and investments by region and



industry. A multi-unit enterprise will normally conduct activities in several industries and/or in several municipalities. For this reason we collect more characteristics on local KAU level on multi-unit enterprises than single unit enterprise for which there is identical information on enterprise and local KAU.

The questionnaires are as much as possible designed and tied up with the standard account plan and the Standard Industry Form. Our questionnaire for multi-business enterprises can be found as an annex (in Norwegian).

**Ownership.** The local KAUs are classified by the type of ownership of the enterprise defined by the juridical responsibility for its liabilities. The types of legal organisations are divided into the following subgroups:

*Sole proprietorship*, i.e. a one-man enterprise in which the owner is responsible with all his capital for the liabilities of the enterprise.

*General partnership*, i.e. an enterprise with two or more owners being responsible with all their capital for the liabilities of the enterprise.

*Private limited company*, i.e. an enterprise in which the owners' liabilities are limited to invested share capital.

*Public limited company*, i.e. an enterprise in which the owners' liabilities are limited to invested share capital, and which is often quoted on the stock exchange.

*Limited liability*, i.e. an enterprise in which the owners' liabilities are limited to invested capital.

*Other type of ownership.* Included are institutions etc. and other types of ownership not mentioned above.

**Persons employed (employment)** include all persons working in the local KAU, also persons on sick leave, vacation and strike. However, laid-off personnel and persons on military leave are excluded. The number of employees in the structural statistics shows an average of the number that has been employed throughout the year.

Unlike the register-based employment statistics, where persons are only counted in their main job, in structural statistics a person may have more than one job. The register-based employment statistics are based on the number of persons employed, while the structural statistics provide information on the companies and enterprises included in the population. Therefore, the employment figures will not be directly comparable with figures in other employment statistics.

Hired labour from employment agencies is not included in the employment figures.

Only individual proprietors and partners actively engaged in the work of the local KAU are included. Working shareholders in corporations and co-operatives are counted as ordinary employees.

Employees comprise salaried managers and directors as well as transport workers, messengers, newsmen, caretakers and cleaning personnel.

**Production value (value of gross output)** is defined as the sum of:

- (1) Production on own account
- (2) Repair work done for customers
- (3) Contract work
- (4) Other income

## (5) Gross profit on sale of commodities

1) *Production on own account* is defined so as to include all goods produced by the local KAU during the year of inquiry for sale or delivery to other local KAUs, whether actually delivered, entered into stock or stocks of work in process. Goods produced for delivery to other local KAUs owned by the same enterprise are included, and so are goods produced under lease in other local KAUs.

The sales value of finished products includes freight, packing and public expenses except outgoing value added tax (VAT).

For deliveries within the enterprise, market prices have been used to the largest possible extent. If the enterprise does not know such prices (for goods not sold or purchased by the enterprise), the goods are valued at cost price plus normal profit, or at sales value minus normal gross profit for deliveries to retail stores owned by the enterprise. The production of refined oil products (f.o.b. refinery) is valued at world market prices.

Exceptions have been made from the general rule that production on own account should comprise goods produced for sale for some groups.

Advertising revenue is included in production on own account for the publishing industry. Value of services rendered is considered to be production on own account for the printing industry.

(2) *Repair work done for customers* also includes repair work carried out for other local KAUs within the enterprise. Receipts for material furnished by the local KAU is included. Expenditure on repair work performed on the local KAU's own structures and machinery is not included.

(3) *Contract work* concerns transformation of raw materials furnished by the customers, including cost of material held by the local KAU.

(4) *Other income* includes numerous income types such as income on commissions, licence income, remuneration for consultant activities, know-how, sale from own canteens, income from freight services done for others etc. Interest and dividends and similar financial income are not included.

Rental receipts comprise gross earnings from lease or hire of buildings, structures, machinery, transport equipment and other fixed durable assets.

(5) *Gross profit on sale of commodities*. Many manufacturing local KAUs are engaged in merchandising, i.e. they buy and sell goods without any further processing or transformation. Gross profit of goods sold in the same condition as purchased is defined as sales ÷ cost of the goods. VAT is not included. When the amount of this merchandise is relatively substantial, the merchandising activity is treated as a separate local KAU, classified to retail or wholesale trade.

**Cost of goods and services consumed** is defined as the sum of:

- (1) Raw and auxiliary materials and components used as direct input in the manufacturing process and consumption of purchased ready-made containers and packaging material
- (2) Contract work done by others
- (3) Fuels and electricity consumed
- (4) Repair work done by others
- (5) Other costs

(1) *Raw and auxiliary materials, containers and packaging material etc.*, comprise materials consumed at the local KAU or delivered to others for contract work, and also intermediary products received from other local KAUs of the same enterprise. Raw materials etc. received from others for contract work is excluded.

Auxiliary materials are all goods consumed during the manufacturing process, other than raw materials, components, fuel or packaging material. Auxiliary materials do not form part of the final product. Included here are explosives, lubricants, polish, tools and appliances etc. taken into use during the year of inquiry and not normally lasting for more than one year. Operating supplies such as soap, detergents and cleaning preparations, toiletries and other necessary maintenance equipment are excluded here.

The raw materials consumed are valued at current replacement cost. Indirect taxes payable by the local KAU is excluded. Subsidies received in connection with the consumption of raw and auxiliary materials are included, that is to say not deducted the supplier's invoice amount.

Expenditure for transport - except when done by own employees and equipment - concerning insurance, landing, freight, forwarding services, customs duties etc. are included.

Containers and packaging material etc. are valued at purchase prices. Included here are also items manufactured by other local KAUs owned by the same enterprise, valued at internal clearing prices, or alternatively, at market prices. Inputs in the production of containers and packaging material are only included in so far as the products are consumed by the local KAU itself.

(2) *Contract work done by others* means transformation or processing of raw materials furnished by the respondent. Included are also specialist work performed on products made by the respondent. The figure reported comprises payments to other local KAUs for transformation or processing of raw materials held by the respondent.

(3) *Fuels and electricity consumed* are valued at purchase prices. Excluded are fuel and electricity used for heating employee-occupied dwellings supplied by the enterprise.

(4) *Repair work done by others* covers repairs of buildings, structures, machinery, transport equipment and other fixed durable assets owned or controlled by the local KAU.

(5) *Other costs* include items in the current account. Freight and forwarding connected to sale are included. Rental costs are included and consist of expenses for rent of buildings, plants, machinery, transport means and other operating items. Furthermore advertisement, telephone, postage, representation, per diem expenses etc. are also included; in addition also payment for know-how, project work, research and development, patent and licence costs, insurance and guarantee costs. Liabilities on losses and liabilities in connection with worn-out operating equipment, financial expenses, taxes etc. are not included.

**Value added** is - if nothing else is stated - defined at market prices and equals gross value of production (value of gross output), less cost of goods and services consumed, excluding VAT.

**Value added at factor prices** equals value added at market prices including subsidies, less indirect taxes except VAT, investment levy and national insurance premium.

**Compensation of employees** comprises salaries and wages in cash and kind, other benefits for the employees and social expenses levied by law. Salaries and wages comprise all payments, whether in cash or in kind, made by the employer in connection with work done, to all persons included in the count of employees. It includes taxes, national insurance premium and pension contributions payable by the employee, but deducted by the employer. Bonuses, production awards, holiday allowances and wages paid during periods of sickness, military leave or other absences, and commission earned by salesmen and representatives, are also included.

Other benefits for the employees comprise employers' contributions to private pension, family allowance, health and casualty insurance, life insurance and similar schemes.

Compensation of employees does not include compensation to owners of sole proprietorships or general partnerships, or payment to family members without fixed wages.

**The share of compensation of employees** is defined as the local KAU's total compensation of employees in per cent of value added at factor prices. A compensation share equal to 100, means that the value added exactly covers the compensation of employees.

**Gross investments** is defined as (1) acquisition of fixed durable assets, new and used, with an expected productive life of more than one year, less (2) receipts from sales of fixed durable assets. Own account investment is included in (1).

Acquisition of machinery, transport equipment etc. is recorded at the time when the assets are received, whether or not put into operation during the year. Purchase of buildings, structures, land etc. is treated alike.

The cost of acquisition means actual expenses built up during the year, including investment levy, irrespective of time of payment.

Gross investment figures comprise only investments in capital owned by local KAUs within mining, quarrying or manufacturing. Investment expenditure made in manufacturing etc. by local KAUs belonging to other activity groups, e.g. real estate companies, is not included.

**Operating income.** Operating income comprises sales income, provision income, rental income, public subsidies and other income connected to the operation. Items connected to the enterprise's main activity as well as its secondary activities are included. Public expenses are excluded. Internal deliveries between the enterprise's local KAUs/divisions are not included.

**Operating costs.** Operating costs consist of commodity consumption, wage and salary costs, ordinary depreciation and write-downs and other costs connected to sale, production and administration. Deductible VAT is subtracted.

**Operating profit/loss.** Operating profit/loss equals operating income minus operating costs.

**Profit for the year.** Profit for the year equals the operating profit/loss in addition to the result of financial incomes and financial costs and the result of extraordinary income and costs, taxes deducted.

The connection between operating incomes and gross production value and operation costs and commodity costs are as follows:

*Operating income* - cost of sold merchandise + changes in stocks of finished goods and goods being processed – profit from sale of operating equipment + duties - subsidies  
= *Gross value of production*.

*Operating costs* - wage and salary costs- cost of sold merchandise - ordinary depreciations and write-downs - changes in stocks of finished goods and goods being processed  
= *Cost of goods and services consumed*.

### 3.3. Standard classifications

The classification is in accordance with the Norwegian Standard Industrial Classification (SIC2002), which is based on the industrial classifications approved by the EU (NACE Rev. 1.1) and the UN (ISIC Rev. 3). A new version of Norwegian industry classification (SIC2007) was implemented in January 2009. This survey is affected as from the publishing of preliminary figures for 2008. You can read more about SIC2002 on our webpage, <http://www.ssb.no/english/>.

## 4. Sources of error and uncertainty

Errors may and do occur in many steps of the data-capture process. Typical sources for errors are respondents filling in forms incorrectly, registration errors, optical reading errors and revision errors. Other errors originate in the registers, different principles for accounting and possibly different interpretation of terms. Many errors and inconsistencies are discovered and corrected through a thorough revision process and through manual and machine checks.

Since data from most of the local KAUs with less than ten employees are estimated, there is bound to be more uncertainties connected to these data. The uncertainties will vary for the different variables because some of the variables are better covered in registers, e.g. employment and certain account variables.

## 5. Comparability and coherence

### 5.1. Spatial comparability and comparability over time

*Preliminary figures* are published while data are still under revision, and may therefore deviate from the final figures that are published within 18 months of the end of the reference year. Preliminary data for the enterprises in the sample that have not yet responded at the time of publishing are estimated by using other sources.

For *final figures*, electronic data files exist as far back as the reference year 1966. The data is mainly comparable when it concerns coverage and variables.

When making comparisons with previously published figures it must be kept in mind that older data may have been corrected during later revisions. Updating of industry codes in the Register of Establishments and Enterprises may also have entailed revisions for some of the industries. These changes are not back dated.

Changes in accounting legislation, classification practice, samples, details of the terms etc. can also be responsible for comparability being limited.

There have been several important changes for the mining, quarrying and manufacturing structural statistics. 1) In 1989 there was a change in treatment of small units, which led to about 1 000 local KAUs being removed and with that a reduction in employment figures of about 3 000. 2) In the 1990s, Statistics Norway

implemented a new industry standard (SIC94), which differed substantially from the previous standard from 1983. The first publication conforming to SIC94 was published in 1995, and contained data for the reference years 1989-1993. Several relocations of local KAUs were done, both within the manufacturing industry and between the manufacturing industry and other activity groups. Amongst other thing, sheltered workshops were relocated from manufacturing to social services, and casting of concrete yields was relocated from manufacturing to building and construction. Recycling was established as a new manufacturing industry (relocated from tertiary industry). Together, all the changes led to a decrease of 10 000 employees within mining, quarrying and manufacturing, and a fall of respectively 6.1 per cent and 1.2 per cent for the production value and value added. 3) As of 1996, production value includes freight, 4) and asphalt plants were regrouped from 23 Coal and refined petroleum products to industry division 26 Non-metallic mineral from 1996. 5) In 1996 an adjustment was made according to the EU's regulation concerning structural business statistics. As a result, enterprises have become more important with respect to collection and presentation of the statistics. 6) As of 1998, workshops within an enterprise were reclassified from manufacturing to transportation. This concerned amongst other repairs on locomotives and airplanes. 7) The last important change is that sole proprietorships where the owner works alone or local KAUs where turnover less than half a man-year are included as of 1999. These units employ approximately 10 000 persons.

## 5.2. Coherence

This survey is mainly comparable to the manufacturing commodity figures, as they both cover mining, quarrying and manufacturing. The differences lies primarily in that 1) the commodity figures use enterprise as survey unit, while the structural statistics use local KAUs, and 2) that while the structural statistics count all local KAUs, the commodity figures has a cut-off at 10-20 employees (depending on industry). These differences imply that the surveys can not be compared directly, but that tendencies should coincide. Commodity figures are published 4 and 8 months before the preliminary and final structural statistics figures, respectively, and are used as pointers for the development in different industries within mining, quarrying and manufacturing together with indicators from the short term statistics for manufacturing.

## 6. Availability

### 6.1. Internet address

Structural figures for mining, quarrying and manufacturing can be found at [http://www.ssb.no/english/subjects/10/07/sti\\_en/](http://www.ssb.no/english/subjects/10/07/sti_en/) and on our theme page [http://www.ssb.no/industri\\_en/](http://www.ssb.no/industri_en/). The commodity figures can be found at [http://www.ssb.no/english/subjects/10/07/vti\\_en/](http://www.ssb.no/english/subjects/10/07/vti_en/).

### 6.2. Language (bokmål/nynorsk, English)

All publications are published in Norwegian (bokmål or nynorsk) and in English.

### 6.3. Publications

Figures are also published in StatBank <http://statbank.ssb.no/statistikkbanken/?PLanguage=1>. Some tables are published in Statistical Yearbook of Norway.

### 6.4. Storing and use of basic material

Micro data and information on sample units and population are stored temporarily in the programming language SAS, and permanently as text files.

## 6.5. Other documentation

*Eurostat manual on the production of Structural Business Statistics* is used in the preparation of structural figures for mining, quarrying and manufacturing.

*About the statistics* on our webpage gives more information about the survey, [http://www.ssb.no/english/subjects/10/07/sti\\_en/about.html](http://www.ssb.no/english/subjects/10/07/sti_en/about.html).

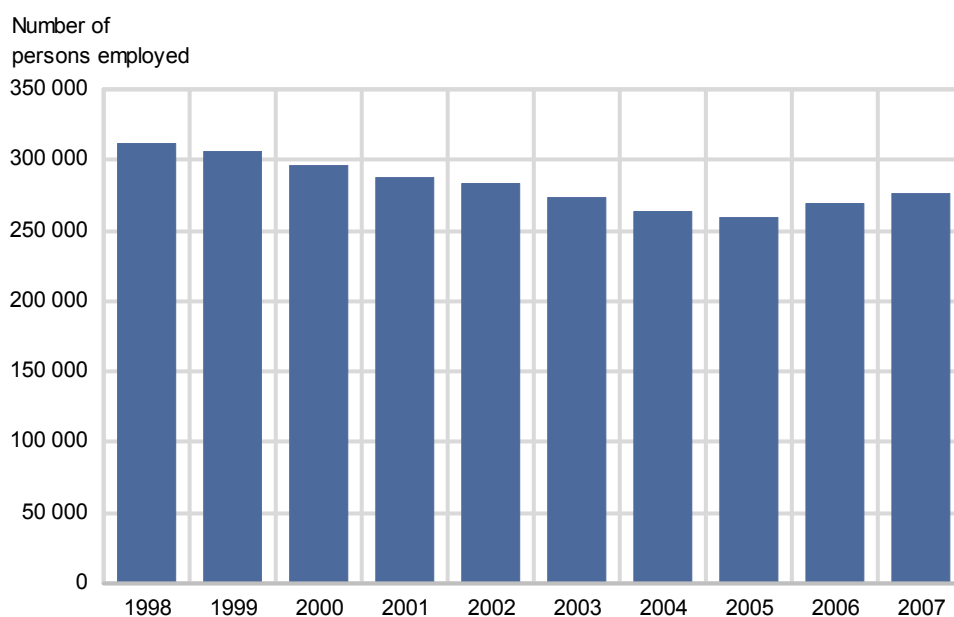
## 7. Main results

### 7.1. Employment

In 1998 the number of persons employed was the highest within mining, quarrying and manufacturing since 1988, with approximately 300 000 persons employed. That was the sixth year in a row that employment figures rose. But as of 1999 the employment started falling, and reached the bottom in 2005, when ca. 260 000 persons were employed in mining, quarrying or manufacturing. Then, employment rose by 9 500 persons from 2005 to 2006. The increase kept on through 2007, and the number of persons employed reached 276 000.

Despite the increase these few last years the number of persons employed has fallen by 12 per cent (approx. 35 800 persons) since 1998.

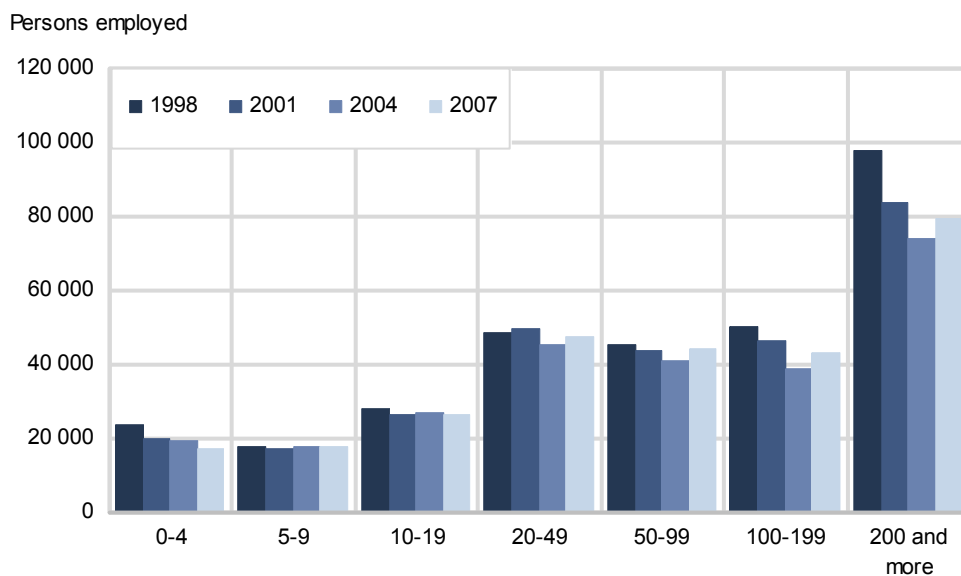
**Figure 1. Employment in mining, quarrying and manufacturing. 1998-2007**



There were about 19 800 local KAUs within mining, quarrying and manufacturing in 2007, and 195 of these employed 200 persons or more. Together these 195 local KAUs employed more than 79 000 persons, which equal 29 per cent of the total employment within mining, quarrying and manufacturing.

Even though the number of persons employed in local KAUs with 200 employees or more has fallen by 19 per cent since 1998, the share of employees working in this group has fallen less, namely by 3 percentage points.

**Figure 2. Number of persons employed by local KAU-size. Mining, quarrying and manufacturing. 1998, 2001, 2004 and 2007**



The food product industries employed more than 49 000 persons in 2007, and were thereby clearly the industries that employed the most persons. The second largest employer was the machinery and equipment industry, with 26 000 persons employed. The food product industries employed the most in 1998 as well, but were then followed by publishing and printing etc..

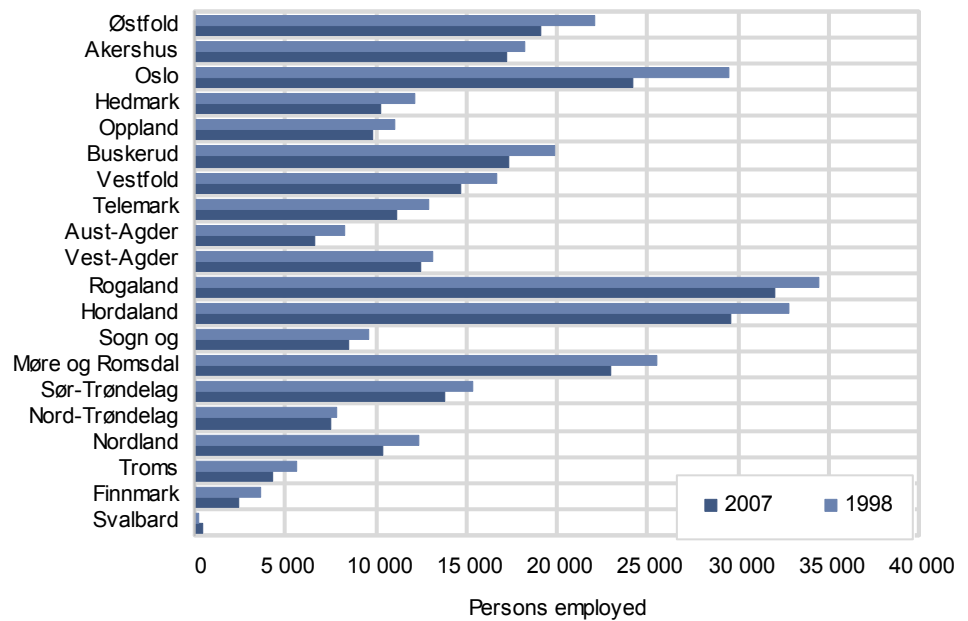
Pulp, paper and paper products, publishing and printing etc. and the textile industries are the ones that have experienced the largest relative changes since 1998, with falls in employment by 38, 37 and 36 per cent, respectively.

There were mainly small changes that took place from 2006 to 2007. Machinery and equipment industry and transport equipment experienced the largest relative changes, with employment figures rising by 9 and 8 per cent, respectively, and for pulp, paper and paper products, where employment fell by 8 per cent.

32 000 persons were employed in mining, quarrying or manufacturing in Rogaland in 2007, and was thereby the county with the most persons employed within these industries. Hordaland and Oslo followed. Rogaland was the county which employed the most persons within mining, quarrying and manufacturing in 1998 as well.



**Figure 3. Number of persons employed by county. Mining, quarrying and manufacturing. 1998 and 2007**

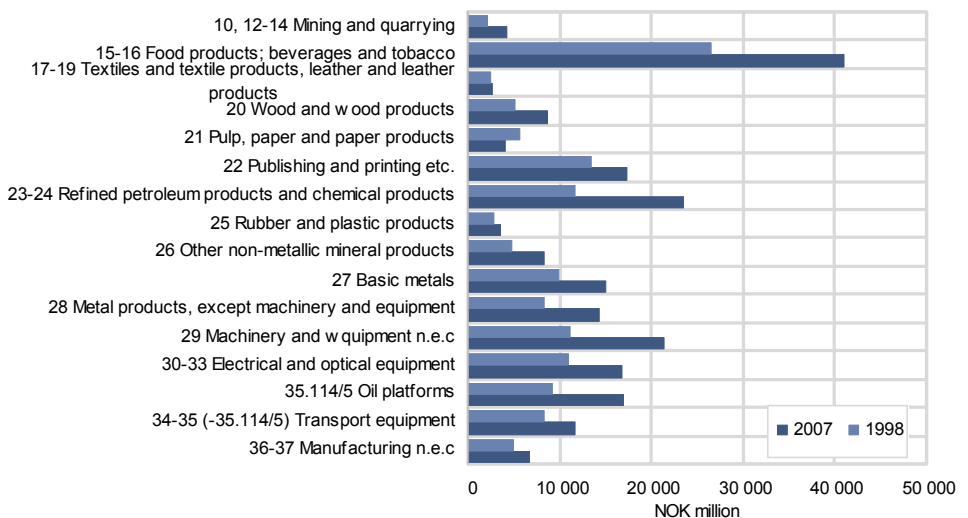


## 7.2. Production and value added

Total value of production in mining, quarrying and manufacturing was close to NOK 800 billion in 2007, a growth of 70 per cent since 1998. Value added, measured at market prices, increased by 3 per cent, to NOK 216 billion, from 2006 to 2007. Value added has risen by 58 per cent since 1998.

Value added per person employed increased from NOK 439 000 in 1998 to NOK 783 000 in 2007 – an upsurge of 78 per cent.

**Figure 4. Value added per person employed by industry. Mining, quarrying and manufacturing. 1998 and 2007**



Value added per person employed in 2007 differed much by industry, from 458 000 in the textiles industry up to 1 588 000 for refined petroleum products and chemical products. Other capital intensive industries, such as the metal industry, had a high value added per person employed as well.

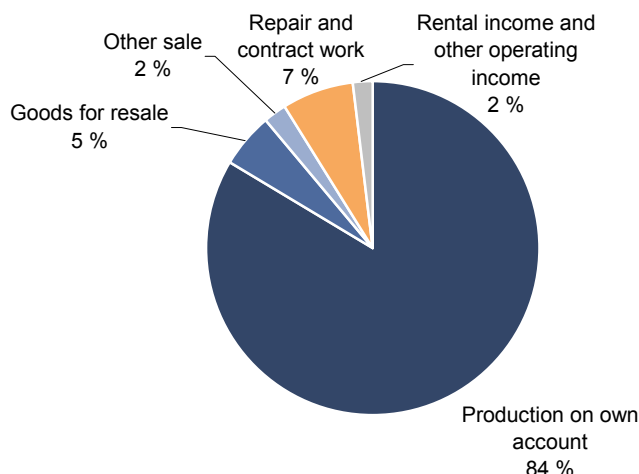
Hordaland, a county strongly influenced by the positive development in the oil refining industry, had the highest value added in 2007 – just a little under NOK 27 billion. Rogaland and Oslo followed.

### 7.3. Income and expenditures

Income for mining, quarrying and manufacturing was NOK 822 billion in 2007.

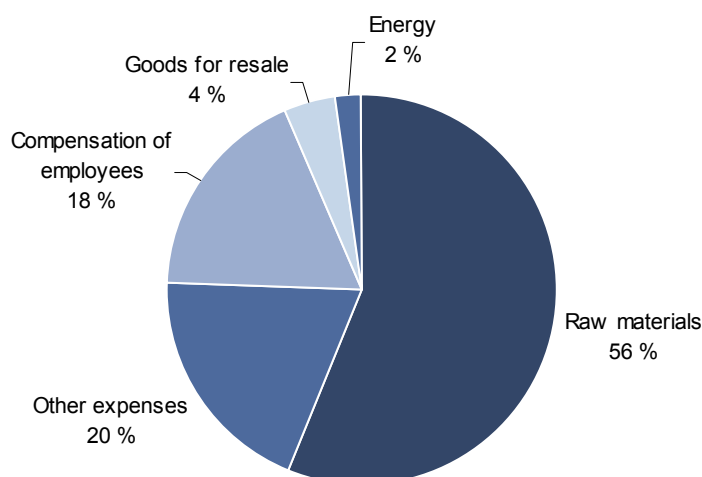
Production on own account generated most of the income for local KAUs in mining, quarrying and manufacturing (84 per cent). 5 per cent of total income came from goods for resale, and 7 per cent came from repair work and contract work.

**Figure 5. Income. Mining, quarrying and manufacturing. 2007**



Expenditures amounted to NOK 747 billion, where half the amount was raw materials (56 per cent). Compensation of employees was the second largest expenditure item (18 per cent). The cost of energy was approximately NOK 17 billion in 2007, equal to 2 per cent of total expenditures.

**Figure 6. Expenditures. Mining, quarrying and manufacturing. 2007**



Income has increased by ca. NOK 324 billion, or 65 per cent, from 1999 to 2007. We see a similar development in expenditures, which has risen with 68 per cent since 1999.

The distribution of income has been more or less constant the last years. As for expenditures, we see that compensation of employees as share of total expenditures has been reduced, while the raw materials share has risen by 5 per cent. That fall in compensation of employees may be connected with the previously mentioned reduction in number of persons employed within mining, quarrying and manufacturing. Other expenditures have been steady, seen as a share of total expenditures.

#### **7.4. Gross investment**

Gross investment for mining, quarrying and manufacturing was NOK 25.6 billion in 2007. That is equal to an increase of NOK 6 billion from 2006 (31 per cent). Gross investments have increased a little more than NOK 4 billion (20 per cent) since 1998.

## 1. Principal figures for all kind-of-activity units (KAUs) in mining, quarrying and manufacturing, 1972 - 2007

	Local KAUs	Persons employed	Compensation of employees	Production value	Value added		Gross investment
					Market prices	Factor prices	
NOK Million							
1972	14 057	384 585	15 145	60 549	21 751	21 913	3 401
1973	14 241	385 180	17 004	70 804	25 102	25 405	3 764
1974	14 834	394 204	20 050	90 386	29 994	31 175	5 859
1975	14 356	390 243	23 817	102 362	33 265	34 707	6 685
1976	14 381	388 941	26 711	112 189	35 385	37 738	6 907
1977	14 161	389 906	29 480	123 531	37 084	40 360	8 838
1978	13 870	383 741	31 242	125 056	38 696	42 076	8 257
1979	13 767	378 617	31 945	143 402	44 814	48 607	7 300
1980	13 831	377 025	34 952	163 148	45 916	50 043	8 952
1981	13 990	370 993	38 375	181 233	49 417	52 971	10 853
1982	13 414	360 442	40 706	189 263	52 557	55 893	8 888
1983	13 117	337 374	42 278	198 332	57 416	60 739	7 767
1984	13 261	333 746	45 829	223 173	65 030	68 213	8 958
1985	13 451	336 249	50 586	252 541	69 882	72 388	11 535
1986	13 569	339 869	55 938	265 667	75 257	78 235	16 035
1987	13 865	338 223	61 722	287 160	83 840	85 426	19 137
1988	13 539	318 298	62 632	302 262	89 144	90 254	17 407
1989 <sup>1</sup>	12 338	296 028	61 301	318 700	89 920	90 901	12 479
1990	11 905	289 327	63 555	327 293	89 435	89 620	13 670
1991	11 511	283 152	66 023	329 672	91 277	90 679	12 731
1992	11 137	275 490	66 711	334 081	93 901	91 582	12 662
1989 <sup>2</sup>	12 236	289 667	60 273	296 357	89 067	89 576	12 371
1990	11 783	282 196	62 263	309 028	88 586	88 205	13 545
1991	11 373	274 189	64 426	310 686	90 225	88 963	12 488
1992	11 020	265 261	64 674	312 709	92 694	89 650	12 335
1993	10 994	266 816	66 665	318 041	98 440	94 771	9 777
1994	11 309	274 101	70 972	345 709	105 345	102 205	11 144
1995	11 021	281 490	75 393	372 578	116 419	112 799	16 139
1996 <sup>3,4</sup>	11 380	286 265	79 239	396 122	117 441	112 528	17 957
1997	11 998	296 184	86 275	433 673	127 384	122 310	17 728
1998	12 105	300 269	92 543	465 720	135 669	129 929	21 268
1999	11 415	295 371	93 980	473 357	141 598	134 196	17 632
2000	11 763	286 479	96 304	496 494	147 444	139 506	15 528
2001	11 160	276 469	98 325	508 340	151 827	142 359	16 514
2002	11 133	273 016	101 680	498 275	152 493	142 748	18 915
2003	10 600	264 082	100 294	494 794	159 240	148 940	14 558
2004	10 519	253 373	103 496	541 055	171 796	161 465	15 219
2005	10 231	250 037	109 777	596 219	182 619	172 041	16 375
2006	10 915	260 128	122 802	696 899	206 672	196 755	19 307
2007	10 503	267 623	133 979	786 915	214 377	205 084	25 211
1998 <sup>5</sup>	22 072	311 762	93 457	469 127	136 932	131 192	21 382
1999	21 131	305 763	94 967	477 004	142 806	135 404	17 672
2000	22 283	296 212	97 571	500 978	148 884	140 946	15 606
2001	21 957	287 835	99 898	514 863	153 907	144 440	16 726
2002	22 610	284 046	102 815	502 569	153 800	144 055	19 067
2003	21 809	273 177	101 513	501 474	161 835	151 536	14 721
2004	21 681	263 855	104 595	547 659	174 453	164 122	15 484
2005	21 171	259 653	110 865	603 617	185 531	174 953	16 659
2006	20 879	269 053	123 789	703 499	209 115	199 198	19 632
2007	19 819	275 944	134 846	797 280	216 197	206 904	25 654

<sup>1</sup> Changed treatment of small kind of activity units (local KAUs) has led to an reduction of about 1 000 KAUs and 3 000 persons employed. <sup>2</sup> Break in the time series because of changed industrial classification. The figures from 1989 below the breaking line are in accordance with the revised Norwegian Industrial Classification (SIC 94), while the figures for 1972 - 1992 above the line conform to the previous standard. <sup>3</sup> From 1996 production value includes freight. <sup>4</sup> Asphalt plants have been reclassified from industry division 23 Coal and refined petroleum products to industry division 26 Non-metallic mineral from 1996. <sup>5</sup> Enterprises with individual proprietorship where the owner is working alone (one-man enterprises) and local KAUs with a turnover of less than half a man-year is included as of 1998.

**2. Persons employed in local KAUs, by industry division. 1998 - 2007**

Industry division	1998	1999	2000	2001	2002	2003	2004	2005	2006	2007
<b>10,12-37 MANUFACTURING, MINING AND QUARRYING</b>	<b>311 762</b>	<b>305 763</b>	<b>296 212</b>	<b>287 835</b>	<b>284 046</b>	<b>273 177</b>	<b>263 855</b>	<b>259 653</b>	<b>269 053</b>	<b>275 944</b>
10,12-14 MINING AND QUARRYING	4 346	4 215	4 095	4 228	4 238	4 115	4 144	4 312	4 456	4 533
10 Coal and peat	252	242	242	286	265	265	282	331	392	427
13 Metal ores	549	451	357	358	393	357	361	389	421	429
14 Other mining and quarrying	3 545	3 522	3 496	3 584	3 580	3 493	3 501	3 592	3 643	3 677
<b>15-37 MANUFACTURING</b>	<b>307 416</b>	<b>301 548</b>	<b>292 117</b>	<b>283 607</b>	<b>279 808</b>	<b>269 062</b>	<b>259 711</b>	<b>255 341</b>	<b>264 597</b>	<b>271 411</b>
<b>15-16 FOOD PRODUCTS; BEVERAGES AND TOBACCO</b>	<b>54 179</b>	<b>54 835</b>	<b>54 144</b>	<b>53 747</b>	<b>53 997</b>	<b>53 366</b>	<b>51 717</b>	<b>49 942</b>	<b>49 566</b>	<b>49 111</b>
15.1 Meat and meat products	11 817	12 106	12 781	12 928	13 302	13 007	12 626	12 163	12 341	12 165
15.2 Fish and fish products	13 080	12 910	12 404	12 147	12 039	11 029	10 268	9 369	8 787	8 837
15.5 Dairy products	5 760	5 748	5 408	5 563	5 453	6 068	6 136	6 182	6 183	6 079
15.3-4/6-8 Other food products	15 792	15 563	15 267	15 272	15 511	15 436	15 199	14 974	15 332	15 206
15.9/16 Beverages and tobacco	5 440	6 137	5 789	5 565	5 386	5 480	5 218	5 004	4 764	4 671
<b>17-19 TEXTILES AND TEXTILE PRODUCTS, LEATHER AND LEATHER PRODUCTS</b>	<b>8 994</b>	<b>8 185</b>	<b>7 713</b>	<b>7 309</b>	<b>6 559</b>	<b>5 943</b>	<b>5 747</b>	<b>5 567</b>	<b>5 675</b>	<b>5 732</b>
17 Textiles	5 805	5 414	5 183	5 125	4 592	4 127	3 928	3 801	3 841	3 886
18 Wearing apparel; dressing and dyeing of fur	2 488	2 151	1 949	1 684	1 540	1 398	1 443	1 454	1 539	1 579
19 Leather and leather products	701	620	581	500	427	418	376	312	295	267
<b>20 WOOD AND WOOD PRODUCTS</b>	<b>16 915</b>	<b>15 922</b>	<b>15 807</b>	<b>15 498</b>	<b>15 514</b>	<b>15 367</b>	<b>15 176</b>	<b>15 350</b>	<b>15 987</b>	<b>16 440</b>
<b>21 PULP, PAPER AND PAPER PRODUCTS</b>	<b>9 897</b>	<b>9 547</b>	<b>8 885</b>	<b>8 774</b>	<b>8 456</b>	<b>8 266</b>	<b>7 914</b>	<b>7 449</b>	<b>6 738</b>	<b>6 169</b>
<b>22 PUBLISHING AND PRINTING ETC.</b>	<b>39 944</b>	<b>36 920</b>	<b>35 894</b>	<b>34 262</b>	<b>32 900</b>	<b>31 004</b>	<b>29 618</b>	<b>25 659</b>	<b>25 604</b>	<b>25 194</b>
<b>23-24 REFINED PETROLEUM PRODUCTS AND CHEMICAL PRODUCTS</b>	<b>15 083</b>	<b>15 186</b>	<b>14 620</b>	<b>13 664</b>	<b>13 673</b>	<b>14 160</b>	<b>14 116</b>	<b>14 689</b>	<b>15 116</b>	<b>14 849</b>
24.1 Refined petroleum products and basic chemicals	9 167	9 020	8 778	7 821	7 753	8 105	8 468	9 130	9 360	9 111
24.2-7 Other chemical products	5 916	6 166	5 842	5 843	5 920	6 055	5 648	5 559	5 756	5 738
<b>25 RUBBER AND PLASTIC PRODUCTS</b>	<b>7 200</b>	<b>6 897</b>	<b>6 823</b>	<b>6 183</b>	<b>5 898</b>	<b>5 902</b>	<b>5 558</b>	<b>5 375</b>	<b>5 402</b>	<b>5 698</b>
<b>26 OTHER NON-METALLIC MINERAL PRODUCTS</b>	<b>10 455</b>	<b>10 220</b>	<b>9 804</b>	<b>9 602</b>	<b>10 187</b>	<b>10 037</b>	<b>9 870</b>	<b>10 315</b>	<b>10 698</b>	<b>10 915</b>
<b>27 BASIC METALS</b>	<b>14 768</b>	<b>14 036</b>	<b>13 922</b>	<b>13 523</b>	<b>12 496</b>	<b>13 703</b>	<b>12 791</b>	<b>12 053</b>	<b>12 143</b>	<b>11 848</b>
<b>28 METAL PRODUCTS, EXCEPT MACHINERY AND EQUIPMENT</b>	<b>22 086</b>	<b>21 989</b>	<b>21 354</b>	<b>21 325</b>	<b>21 715</b>	<b>20 521</b>	<b>20 032</b>	<b>20 062</b>	<b>21 741</b>	<b>23 383</b>
<b>29 MACHINERY AND EQUIPMENT N.E.C.</b>	<b>26 003</b>	<b>24 959</b>	<b>24 953</b>	<b>24 310</b>	<b>24 052</b>	<b>23 197</b>	<b>22 536</b>	<b>23 571</b>	<b>23 887</b>	<b>26 102</b>
<b>30-33 ELECTRICAL AND OPTICAL EQUIPMENT</b>	<b>22 538</b>	<b>23 254</b>	<b>21 882</b>	<b>21 288</b>	<b>20 941</b>	<b>19 131</b>	<b>18 316</b>	<b>18 597</b>	<b>19 474</b>	<b>20 176</b>
30 Office machinery and computers	883	1 224	621	504	424	244	181	188	167	120
31 Electrical machinery and apparatus n.e.c.	10 688	10 793	9 322	8 368	7 996	7 515	7 363	7 527	7 779	8 031
32 Radio, television, communication equipment	4 619	4 599	5 449	6 167	5 643	4 576	4 041	3 936	3 979	4 079
33 Medical, precision and optical instruments	6 348	6 638	6 490	6 249	6 878	6 796	6 731	6 946	7 549	7 946
<b>35.114/5 OIL PLATFORMS</b>	<b>21 008</b>	<b>22 418</b>	<b>19 693</b>	<b>18 704</b>	<b>19 251</b>	<b>17 965</b>	<b>18 067</b>	<b>18 017</b>	<b>20 614</b>	<b>22 093</b>
<b>34-35(-35.114/5) TRANSPORT EQUIPMENT</b>	<b>21 729</b>	<b>21 490</b>	<b>20 748</b>	<b>21 116</b>	<b>20 921</b>	<b>17 995</b>	<b>16 089</b>	<b>16 678</b>	<b>19 857</b>	<b>21 512</b>
34 Motor vehicles, trailers and semitrailers	4 772	5 443	5 653	5 721	5 686	5 197	4 899	4 796	4 640	4 783
35(-35.114/5) Other transport equipment	16 957	16 047	15 095	15 395	15 235	12 798	11 190	11 882	15 217	16 729
<b>36-37 MANUFACTURING N.E.C.</b>	<b>16 617</b>	<b>15 690</b>	<b>15 875</b>	<b>14 302</b>	<b>13 248</b>	<b>12 505</b>	<b>12 164</b>	<b>12 017</b>	<b>12 095</b>	<b>12 189</b>
36 Furniture and manufacturing n.e.c.	15 598	14 628	14 341	13 245	12 266	11 525	11 145	10 837	10 814	10 775
37 Recycling	1 019	1 062	1 534	1 057	982	980	1 019	1 180	1 281	1 414

## 3 Principal figures for local KAUs, by industry division.1998-2007

	Local KAUs	Persons employed	Compen- sation of employees	Production value	Value added		Gross investment
					Market prices	Factor prices	
NOK Million							
<b>10,12-37 MANUFACTURING, MINING AND QUARRYING</b>							
1998 .....	22 072	311 762	93 457	469 127	136 932	131 192	21 382
1999 .....	21 131	305 763	94 967	477 004	142 806	135 404	17 672
2000 .....	22 283	296 212	97 571	500 978	148 884	140 946	15 606
2001 .....	21 957	287 835	99 898	514 863	153 907	144 440	16 726
2002 .....	22 610	284 046	102 815	502 569	153 800	144 055	19 067
2003 .....	21 809	273 177	101 513	501 474	161 835	151 536	14 721
2004 .....	21 681	263 855	104 595	547 659	174 453	164 122	15 484
2005 .....	21 171	259 653	110 865	603 617	185 531	174 953	16 659
2006 .....	20 879	269 053	123 789	703 499	209 115	199 198	19 632
2007 .....	19 819	275 944	134 846	797 280	216 197	206 904	25 654
<b>10,12-14 MINING AND QUARRYING</b>							
1998 .....	664	4 346	1 322	5 967	2 090	2 158	354
1999 .....	667	4 215	1 264	6 149	2 374	2 378	525
2000 .....	706	4 095	1 350	6 370	2 411	2 414	555
2001 .....	695	4 228	1 501	7 286	2 867	2 869	547
2002 .....	726	4 238	1 552	7 348	3 062	3 063	207
2003 .....	714	4 115	1 559	7 588	2 844	2 843	490
2004 .....	712	4 144	1 807	8 624	3 453	3 448	559
2005 .....	705	4 312	1 833	9 267	3 601	3 597	728
2006 .....	685	4 456	2 039	10 202	3 826	3 822	616
2007 .....	651	4 533	2 299	11 817	4 260	4 260	748
<b>10 Coal and peat</b>							
1998 .....	16	252	97	156	51	112	13
1999 .....	12	242	96	142	40	39	64
2000 .....	13	242	101	234	-113	-114	201
2001 .....	13	286	148	600	64	63	151
2002 .....	16	265	133	745	222	221	21
2003 .....	13	265	162	987	300	298	181
2004 .....	14	282	316	1 377	639	633	177
2005 .....	15	331	227	1 109	399	394	233
2006 .....	17	392	329	1 434	390	385	71
2007 .....	15	427	420	2 097	713	713	73
<b>13 Metal ores</b>							
1998 .....	10	549	176	537	176	180	32
1999 .....	7	451	136	473	194	194	14
2000 .....	7	357	139	587	214	214	29
2001 .....	5	358	152	660	297	297	26
2002 .....	7	393	165	663	335	335	41
2003 .....	8	357	163	582	293	293	12
2004 .....	7	361	176	643	320	320	31
2005 .....	6	389	187	719	412	412	68
2006 .....	5	421	210	797	487	488	107
2007 .....	8	429	229	776	421	421	115
<b>14 Other mining and quarrying</b>							
1998 .....	638	3 545	1 049	5 274	1 864	1 866	310
1999 .....	648	3 522	1 032	5 534	2 140	2 145	447
2000 .....	686	3 496	1 110	5 549	2 310	2 314	324
2001 .....	677	3 584	1 200	6 027	2 507	2 509	370
2002 .....	703	3 580	1 254	5 941	2 505	2 507	145
2003 .....	693	3 493	1 235	6 019	2 252	2 252	298
2004 .....	691	3 501	1 315	6 604	2 494	2 494	351
2005 .....	684	3 592	1 419	7 439	2 790	2 790	426
2006 .....	663	3 643	1 499	7 971	2 948	2 949	439
2007 .....	628	3 677	1 650	8 944	3 126	3 126	559

## 3 (cont.). Principal figures for local KAUs, by industry division.1998-2007

	Local KAUs	Persons employed	Compen- sation of employees	Production value	Value added		Gross investment
					Market prices	Factor prices	
					NOK Million		
<b>15-37 MANUFACTURING</b>							
1998 .....	21 408	307 416	92 135	463 160	134 841	129 035	21 027
1999 .....	20 464	301 548	93 704	470 855	140 432	133 026	17 148
2000 .....	21 577	292 117	96 221	494 608	146 473	138 532	15 051
2001 .....	21 262	283 607	98 397	507 576	151 041	141 571	16 179
2002 .....	21 884	279 808	101 263	495 221	150 738	140 992	18 860
2003 .....	21 095	269 062	99 954	493 886	158 991	148 693	14 230
2004 .....	20 969	259 711	102 788	539 035	171 000	160 675	14 925
2005 .....	20 466	255 341	109 032	594 350	181 931	171 356	15 931
2006 .....	20 194	264 597	121 751	693 296	205 289	195 376	19 016
2007 .....	19 168	271 411	132 547	785 463	211 937	202 643	24 906
<b>15-16 FOOD PRODUCTS; BEVERAGES AND TOBACCO</b>							
1998 .....	2 272	54 179	14 199	107 533	26 492	19 826	3 916
1999 .....	2 209	54 835	14 829	114 455	29 448	21 189	3 509
2000 .....	2 281	54 144	15 598	116 873	32 199	23 617	3 825
2001 .....	2 231	53 747	16 102	125 013	34 910	24 797	4 289
2002 .....	2 297	53 997	17 142	129 238	36 784	26 260	4 262
2003 .....	2 268	53 366	17 426	128 561	39 278	28 154	3 650
2004 .....	2 239	51 717	17 674	134 636	39 817	28 987	3 136
2005 .....	2 237	49 942	18 144	137 777	40 683	29 743	2 916
2006 .....	2 240	49 566	19 054	143 483	43 287	32 966	3 663
2007 .....	2 148	49 111	20 421	153 759	40 904	31 495	3 836
<b>15.1 Meat and meat products</b>							
1998 .....	322	11 817	3 084	25 968	2 972	3 616	381
1999 .....	319	12 106	3 259	27 704	3 574	4 179	529
2000 .....	325	12 781	3 584	29 415	4 004	4 327	665
2001 .....	311	12 928	3 746	34 310	4 795	4 817	620
2002 .....	333	13 302	4 015	35 661	5 347	5 389	748
2003 .....	343	13 007	4 104	36 829	5 374	5 572	587
2004 .....	344	12 626	4 215	39 037	5 400	5 592	603
2005 .....	348	12 163	4 335	40 152	5 489	5 536	604
2006 .....	349	12 341	4 613	36 306	4 573	5 603	611
2007 .....	342	12 165	5 062	38 683	5 002	6 196	634
<b>15.2 Fish and fish products</b>							
1998 .....	663	13 080	3 022	23 369	4 639	4 677	1 025
1999 .....	638	12 910	3 102	23 752	4 003	4 038	992
2000 .....	657	12 404	3 154	24 369	4 347	4 370	1 007
2001 .....	643	12 147	3 298	26 050	4 906	4 930	1 407
2002 .....	645	12 039	3 405	24 679	4 117	4 132	952
2003 .....	627	11 029	3 233	20 994	4 395	4 413	820
2004 .....	616	10 268	3 215	23 293	5 249	5 266	594
2005 .....	583	9 369	3 090	25 143	5 680	5 696	413
2006 .....	558	8 787	3 214	30 323	8 011	8 028	863
2007 .....	508	8 837	3 466	34 011	5 773	5 779	900
<b>15.5 Dairy products</b>							
1998 .....	102	5 760	1 704	13 718	1 695	2 074	391
1999 .....	101	5 748	1 750	13 604	1 997	2 141	433
2000 .....	92	5 408	1 751	13 045	2 231	2 308	350
2001 .....	87	5 563	1 857	13 093	2 243	2 357	368
2002 .....	89	5 453	2 065	14 797	3 018	2 698	514
2003 .....	91	6 068	2 238	14 760	3 697	3 190	546
2004 .....	90	6 136	2 263	14 565	3 007	3 007	529
2005 .....	93	6 182	2 391	15 671	3 272	3 272	667
2006 .....	94	6 183	2 509	16 151	3 232	3 232	586
2007 .....	103	6 079	2 559	17 333	3 724	3 724	535
<b>15.3-4/6-8 Other food products</b>							
1998 .....	1 117	17 631	4 653	30 691	7 319	6 941	1 279
1999 .....	1 088	17 429	4 675	31 322	8 438	8 049	852
2000 .....	1 137	17 280	5 028	32 161	9 473	9 108	1 157
2001 .....	1 123	17 065	5 080	32 628	9 609	9 200	1 390
2002 .....	1 151	17 367	5 450	34 404	10 673	10 244	1 478
2003 .....	1 127	17 333	5 542	35 683	11 545	11 058	1 381
2004 .....	1 111	17 031	5 708	37 498	11 775	11 253	1 227
2005 .....	1 137	16 887	6 064	36 785	11 946	11 427	895
2006 .....	1 157	17 199	6 440	40 332	12 949	12 293	1 261
2007 .....	1 119	17 102	6 802	43 155	11 852	11 295	1 396

## 3 (cont.). Principal figures for local KAUs, by industry division.1998-2007

	Local KAUs	Persons employed	Compen- sation of employees	Production value	Value added		Gross investment
					Market prices	Factor prices	
					NOK Million		
<b>15.9/16 Beverages and tobacco</b>							
1998 .....	68	5 891	1 737	13 787	9 867	2 519	839
1999 .....	63	6 642	2 043	18 074	11 436	2 782	704
2000 .....	70	6 271	2 081	17 882	12 145	3 503	646
2001 .....	67	6 044	2 120	18 933	13 356	3 492	505
2002 .....	79	5 836	2 208	19 697	13 629	3 797	570
2003 .....	80	5 929	2 309	20 294	14 267	3 921	316
2004 .....	78	5 656	2 273	20 243	14 386	3 870	183
2005 .....	76	5 341	2 264	20 026	14 296	3 811	338
2006 .....	82	5 056	2 277	20 371	14 522	3 810	343
2007 .....	76	4 928	2 532	20 578	14 553	4 501	371
<b>17-19 TEXTILES AND TEXTILE PRODUCTS, LEATHER AND LEATHER PRODUCTS</b>							
1998 .....	1 588	8 994	1 860	6 266	2 389	2 392	190
1999 .....	1 485	8 185	1 665	5 665	2 147	2 149	160
2000 .....	1 548	7 713	1 695	5 932	2 114	2 117	75
2001 .....	1 502	7 309	1 692	5 982	2 346	2 349	162
2002 .....	1 514	6 559	1 597	5 656	2 132	2 136	95
2003 .....	1 419	5 943	1 482	5 542	2 109	2 114	166
2004 .....	1 406	5 747	1 478	5 404	2 177	2 189	90
2005 .....	1 360	5 567	1 526	5 987	2 374	2 382	96
2006 .....	1 329	5 675	1 664	6 791	2 682	2 687	165
2007 .....	1 272	5 732	1 826	7 470	2 627	2 628	256
<b>17 Textiles</b>							
1998 .....	854	5 805	1 275	4 351	1 685	1 686	178
1999 .....	808	5 414	1 170	4 085	1 576	1 577	127
2000 .....	842	5 183	1 207	4 169	1 510	1 512	52
2001 .....	829	5 125	1 253	4 275	1 642	1 644	147
2002 .....	826	4 592	1 187	3 989	1 529	1 532	94
2003 .....	756	4 127	1 087	3 831	1 515	1 520	132
2004 .....	747	3 928	1 071	3 870	1 554	1 565	65
2005 .....	710	3 801	1 100	4 167	1 689	1 697	46
2006 .....	685	3 841	1 205	4 637	1 925	1 930	120
2007 .....	639	3 886	1 300	4 901	1 749	1 749	176
<b>18 Wearing apparel; dressing and dyeing of fur</b>							
1998 .....	623	2 488	442	1 438	551	553	7
1999 .....	579	2 151	368	1 113	416	417	28
2000 .....	611	1 949	359	1 236	456	456	19
2001 .....	585	1 684	321	1 221	548	549	12
2002 .....	607	1 540	309	1 234	464	464	-2
2003 .....	591	1 398	290	1 315	470	470	18
2004 .....	589	1 443	308	1 183	497	497	23
2005 .....	586	1 454	340	1 451	578	579	47
2006 .....	592	1 539	377	1 819	657	657	42
2007 .....	587	1 579	445	2 190	779	779	74
<b>19 Leather and leather products</b>							
1998 .....	111	701	142	477	152	152	5
1999 .....	98	620	126	467	155	155	5
2000 .....	95	581	129	527	149	149	4
2001 .....	88	500	118	486	156	156	3
2002 .....	81	427	101	433	139	139	3
2003 .....	72	418	105	396	125	125	16
2004 .....	70	376	99	351	127	127	3
2005 .....	64	312	86	369	106	106	3
2006 .....	52	295	81	335	100	100	2
2007 .....	46	267	81	379	100	100	6
<b>20 WOOD AND WOOD PRODUCTS</b>							
1998 .....	2 289	16 915	4 056	17 675	5 111	5 129	661
1999 .....	2 252	15 922	3 784	16 962	4 933	4 941	452
2000 .....	2 358	15 807	4 003	18 347	5 368	5 378	333
2001 .....	2 301	15 498	4 213	19 293	6 307	6 316	535
2002 .....	2 272	15 514	4 278	18 226	5 789	5 800	617
2003 .....	2 153	15 367	4 412	18 558	5 920	5 931	842
2004 .....	2 118	15 176	4 619	21 109	6 877	6 889	568
2005 .....	2 055	15 350	4 983	22 404	7 286	7 295	735
2006 .....	2 029	15 987	5 383	24 513	7 984	7 994	807
2007 .....	1 828	16 440	6 018	28 926	8 683	8 682	987



## 3 (cont.). Principal figures for local KAUs, by industry division.1998-2007

	Local KAUs	Persons employed	Compen- sation of employees	Production value	Value added		Gross investment
					Market prices	Factor prices	
					NOK Million		
<b>21 PULP, PAPER AND PAPER PRODUCTS</b>							
1998 .....	147	9 897	3 289	19 727	5 710	5 741	2 086
1999 .....	129	9 547	3 210	19 727	5 771	5 788	1 376
2000 .....	125	8 885	3 410	20 357	6 341	6 354	908
2001 .....	123	8 774	3 431	20 636	7 085	7 091	701
2002 .....	119	8 456	3 255	17 016	4 878	4 883	635
2003 .....	118	8 266	3 229	17 098	4 766	4 774	92
2004 .....	114	7 914	3 250	19 980	4 794	4 798	876
2005 .....	114	7 449	3 208	19 054	4 311	4 313	784
2006 .....	110	6 738	3 154	18 969	4 691	4 693	569
2007 .....	102	6 169	2 948	20 098	4 100	4 107	1 075
<b>22 PUBLISHING AND PRINTING ETC.</b>							
1998 .....	3 721	39 944	11 008	33 638	13 494	13 710	2 438
1999 .....	3 368	36 920	10 604	33 638	13 537	13 753	1 611
2000 .....	3 588	35 894	11 157	35 507	14 344	14 514	1 081
2001 .....	3 573	34 262	11 274	36 547	14 734	14 920	699
2002 .....	3 727	32 900	11 163	35 927	15 070	15 298	537
2003 .....	3 497	31 004	11 172	36 234	15 753	15 988	851
2004 .....	3 370	29 618	11 360	38 551	16 570	16 809	558
2005 .....	3 237	25 659	11 667	39 669	16 459	16 692	1 032
2006 .....	3 138	25 604	12 238	41 539	17 204	17 458	1 186
2007 .....	2 916	25 194	13 113	43 143	17 348	17 396	574
<b>23-24 REFINED PETROLEUM PRODUCTS AND CHEMICAL PRODUCTS</b>							
1998 .....	316	15 083	5 934	50 120	11 737	11 758	3 883
1999 .....	288	15 186	6 125	55 702	12 423	12 442	3 469
2000 .....	300	14 620	6 432	72 215	13 322	13 340	2 396
2001 .....	300	13 664	6 629	65 390	12 898	12 918	2 417
2002 .....	306	13 673	6 869	59 328	11 661	11 668	2 697
2003 .....	300	14 160	7 082	65 035	14 970	14 978	2 177
2004 .....	303	14 116	7 727	77 502	18 988	19 007	2 751
2005 .....	288	14 689	8 273	97 396	22 080	22 092	3 852
2006 .....	289	15 116	9 062	113 569	24 008	24 033	3 815
2007 .....	287	14 849	9 379	118 847	23 584	23 613	4 766
<b>24.1 Refined petroleum products and basic chemicals</b>							
1998 .....	114	9 167	3 653	37 994	7 991	7 999	3 339
1999 .....	110	9 020	3 700	42 548	8 396	8 403	2 912
2000 .....	120	8 778	3 983	58 159	8 977	8 982	1 751
2001 .....	121	7 821	3 986	51 131	8 249	8 256	1 745
2002 .....	109	7 753	3 967	44 850	6 367	6 375	2 094
2003 .....	107	8 105	4 114	50 625	9 546	9 555	1 612
2004 .....	108	8 468	4 875	63 804	13 415	13 423	2 015
2005 .....	98	9 130	5 336	82 949	16 318	16 329	3 278
2006 .....	101	9 360	5 772	96 357	16 371	16 387	3 065
2007 .....	97	9 111	6 071	101 293	16 009	16 025	4 165
<b>24.2-7 Other chemical products</b>							
1998 .....	202	5 916	2 281	12 125	3 746	3 758	544
1999 .....	178	6 166	2 425	13 154	4 027	4 040	558
2000 .....	180	5 842	2 449	14 057	4 345	4 358	645
2001 .....	179	5 843	2 643	14 259	4 650	4 662	673
2002 .....	197	5 920	2 901	14 477	5 294	5 293	603
2003 .....	193	6 055	2 968	14 410	5 424	5 423	565
2004 .....	195	5 648	2 852	13 698	5 573	5 584	736
2005 .....	190	5 559	2 937	14 448	5 762	5 762	573
2006 .....	188	5 756	3 290	17 212	7 636	7 646	750
2007 .....	190	5 738	3 308	17 554	7 575	7 588	601

## 3 (cont.). Principal figures for local KAUs, by industry division.1998-2007

	Local KAUs	Persons employed	Compen- sation of employees	Production value	Value added		Gross investment
					Market prices	Factor prices	
					NOK Million		
<b>25 RUBBER AND PLASTIC PRODUCTS</b>							
1998 .....	488	7 200	2 071	7 862	2 740	2 750	485
1999 .....	468	6 897	2 036	7 518	2 754	2 759	550
2000 .....	490	6 823	2 107	7 718	2 583	2 593	419
2001 .....	483	6 183	1 981	7 565	2 598	2 606	161
2002 .....	465	5 898	1 915	7 285	2 583	2 594	205
2003 .....	465	5 902	2 003	7 485	2 775	2 781	299
2004 .....	471	5 558	1 973	7 893	2 691	2 696	232
2005 .....	448	5 375	2 057	8 367	3 092	3 097	238
2006 .....	441	5 402	2 174	8 937	3 223	3 228	399
2007 .....	407	5 698	2 394	10 515	3 495	3 495	298
<b>26 OTHER NON-METALLIC MINERAL PRODUCTS</b>							
1998 .....	1 037	10 455	3 128	13 634	4 745	4 752	807
1999 .....	984	10 220	3 183	13 861	4 801	4 805	1 027
2000 .....	1 015	9 804	3 185	14 121	4 980	4 983	795
2001 .....	995	9 602	3 348	14 351	4 821	4 822	527
2002 .....	1 018	10 187	3 556	14 930	5 357	5 362	623
2003 .....	971	10 037	3 603	15 107	5 335	5 341	454
2004 .....	975	9 870	3 801	16 850	5 868	5 876	866
2005 .....	953	10 315	4 203	19 117	6 732	6 738	745
2006 .....	947	10 698	4 638	21 709	7 347	7 362	919
2007 .....	881	10 915	5 242	25 108	8 287	8 295	3 998
<b>27 BASIC METALS</b>							
1998 .....	197	14 768	5 386	40 179	9 949	9 955	1 546
1999 .....	182	14 036	5 220	39 731	9 715	9 717	1 262
2000 .....	207	13 922	5 455	48 311	12 499	12 502	1 605
2001 .....	205	13 523	5 393	46 387	11 692	11 694	2 763
2002 .....	193	12 496	5 220	39 517	8 633	8 634	5 472
2003 .....	189	13 703	5 563	42 523	10 675	10 682	3 029
2004 .....	193	12 791	6 010	53 234	13 695	13 697	2 385
2005 .....	180	12 053	5 773	53 463	12 439	12 441	1 638
2006 .....	173	12 143	6 507	68 720	15 330	15 331	1 601
2007 .....	157	11 848	6 324	81 489	15 001	15 001	2 192
<b>28 METAL PRODUCTS, EXCEPT MACHINERY AND EQUIPMENT</b>							
1998 .....	2 272	22 086	6 324	20 793	8 221	8 238	935
1999 .....	2 211	21 989	6 448	20 977	8 581	8 592	510
2000 .....	2 360	21 354	6 486	20 466	8 156	8 171	494
2001 .....	2 343	21 325	6 838	21 387	8 476	8 483	584
2002 .....	2 431	21 715	7 239	22 594	9 471	9 480	551
2003 .....	2 438	20 521	6 811	20 833	8 986	8 999	409
2004 .....	2 489	20 032	7 071	22 867	9 672	9 685	574
2005 .....	2 412	20 062	7 603	26 369	10 695	10 710	503
2006 .....	2 479	21 741	8 931	31 552	12 646	12 663	887
2007 .....	2 490	23 383	10 250	37 794	14 262	14 264	869
<b>29 MACHINERY AND EQUIPMENT N.E.C</b>							
1998 .....	2 529	26 003	8 483	32 654	11 124	11 145	985
1999 .....	2 461	24 959	8 401	30 053	11 090	11 103	769
2000 .....	2 639	24 953	8 673	30 723	10 289	10 308	780
2001 .....	2 618	24 310	9 265	35 897	12 048	12 063	774
2002 .....	2 703	24 052	9 561	36 343	12 996	13 020	669
2003 .....	2 650	23 197	9 427	35 015	12 997	13 017	569
2004 .....	2 651	22 536	9 375	34 378	12 732	12 744	923
2005 .....	2 599	23 571	10 754	41 355	14 643	14 658	765
2006 .....	2 510	23 887	12 039	53 669	18 054	18 063	1 220
2007 .....	2 388	26 102	14 181	72 813	21 435	21 439	1 566

## 3 (cont.). Principal figures for local KAUs, by industry division.1998-2007

	Local KAUs	Persons employed	Compen- sation of employees	Production value	Value added		Gross investment
					Market prices	Factor prices	
					NOK Million		
<b>30-33 ELECTRICAL AND OPTICAL EQUIPMENT</b>							
1998 .....	1 277	22 538	7 970	30 925	10 873	10 892	1 046
1999 .....	1 236	23 254	8 901	34 658	12 274	12 297	1 031
2000 .....	1 179	21 882	8 948	34 379	11 400	11 426	963
2001 .....	1 173	21 288	9 213	35 189	10 663	10 694	879
2002 .....	1 364	20 941	9 129	32 453	10 837	10 851	654
2003 .....	1 268	19 131	8 460	30 662	10 764	10 786	448
2004 .....	1 287	18 316	8 696	32 666	11 555	11 584	585
2005 .....	1 288	18 597	9 439	36 824	13 337	13 357	1 027
2006 .....	1 256	19 474	10 739	43 773	14 903	14 914	989
2007 .....	1 191	20 176	11 578	50 388	16 870	16 874	1 422
<b>30 Office machinery and computers</b>							
1998 .....	56	883	327	2 078	430	431	21
1999 .....	57	1 224	535	2 897	648	652	33
2000 .....	53	621	279	1 398	202	208	13
2001 .....	49	504	227	1 276	242	248	24
2002 .....	51	424	189	839	86	86	9
2003 .....	44	244	124	579	191	193	1
2004 .....	42	181	96	397	140	141	3
2005 .....	37	188	107	512	168	170	12
2006 .....	24	167	109	560	108	109	6
2007 .....	15	120	91	650	122	122	3
<b>31 Electrical machinery and apparatus n.e.c</b>							
1998 .....	542	10 688	3 713	13 943	5 134	5 148	596
1999 .....	522	10 793	3 932	14 408	4 607	4 612	669
2000 .....	544	9 322	3 395	12 075	4 114	4 117	376
2001 .....	545	8 368	3 240	12 154	3 929	3 932	386
2002 .....	537	7 996	3 209	11 552	3 961	3 965	279
2003 .....	532	7 515	2 944	11 145	3 841	3 846	188
2004 .....	521	7 363	3 172	13 010	4 461	4 467	197
2005 .....	516	7 527	3 540	14 318	5 018	5 021	492
2006 .....	486	7 779	3 854	17 108	5 681	5 685	443
2007 .....	443	8 031	4 340	20 321	6 338	6 338	322
<b>32 Radio, television, communication equipment</b>							
1998 .....	153	4 619	1 663	6 004	2 307	2 311	135
1999 .....	146	4 599	1 794	7 574	3 353	3 356	137
2000 .....	145	5 449	2 453	11 447	3 858	3 864	379
2001 .....	145	6 167	2 792	11 527	3 222	3 223	328
2002 .....	149	5 643	2 471	9 241	2 774	2 780	203
2003 .....	146	4 576	2 116	8 228	2 657	2 663	134
2004 .....	151	4 041	2 037	8 263	2 691	2 700	151
2005 .....	138	3 936	2 124	8 878	3 173	3 182	253
2006 .....	131	3 979	2 362	10 490	3 317	3 320	290
2007 .....	128	4 079	2 237	11 099	4 080	4 080	839
<b>33 Medical, precision and optical instruments</b>							
1998 .....	526	6 348	2 268	8 900	3 002	3 003	294
1999 .....	511	6 638	2 641	9 779	3 666	3 676	192
2000 .....	437	6 490	2 820	9 459	3 225	3 237	195
2001 .....	434	6 249	2 954	10 232	3 271	3 291	140
2002 .....	627	6 878	3 259	10 821	4 015	4 021	163
2003 .....	546	6 796	3 276	10 710	4 074	4 084	126
2004 .....	573	6 731	3 390	10 996	4 263	4 275	234
2005 .....	597	6 946	3 668	13 116	4 978	4 984	270
2006 .....	615	7 549	4 416	15 616	5 797	5 800	250
2007 .....	605	7 946	4 910	18 319	6 329	6 334	257

## 3 (cont.). Principal figures for local KAUs, by industry division.1998-2007

	Local KAUs	Persons employed	Compen- sation of employees	Production value	Value added		Gross investment
					Market prices	Factor prices	
					NOK Million		
<b>35.114/5 OIL PLATFORMS</b>							
1998 .....	113	21 008	7 981	37 765	9 109	9 115	683
1999 .....	124	22 418	8 935	36 267	10 521	10 529	308
2000 .....	116	19 693	8 230	25 903	9 023	9 073	196
2001 .....	127	18 704	7 933	26 528	8 665	8 686	344
2002 .....	119	19 251	9 157	29 421	10 278	10 283	483
2003 .....	120	17 965	8 960	30 341	10 835	10 846	61
2004 .....	125	18 067	9 462	32 851	10 735	10 745	260
2005 .....	127	18 017	10 497	38 303	12 122	12 128	363
2006 .....	132	20 614	12 906	53 312	15 939	15 946	729
2007 .....	129	22 093	13 973	60 242	16 977	16 979	885
<b>34-35(-35.114/5) TRANSPORT EQUIPMENT</b>							
1998 .....	1 129	21 729	6 425	29 978	8 281	8 754	900
1999 .....	1 098	21 490	6 445	27 563	7 492	8 008	669
2000 .....	1 183	20 748	6 584	27 947	8 099	8 392	563
2001 .....	1 172	21 116	7 190	32 943	8 829	9 159	683
2002 .....	1 208	20 921	7 411	33 355	9 169	9 607	933
2003 .....	1 192	17 995	6 661	27 198	8 703	9 163	638
2004 .....	1 220	16 089	6 494	25 808	8 699	8 828	668
2005 .....	1 220	16 678	6 888	32 200	9 498	9 518	724
2006 .....	1 211	19 857	9 000	44 998	11 248	11 274	1 301
2007 .....	1 185	21 512	10 349	55 266	11 578	11 590	1 574
<b>34 Motor vehicles, trailers and semitrailers</b>							
1998 .....	131	4 772	1 431	5 275	1 837	1 845	427
1999 .....	133	5 443	1 701	6 042	1 951	1 957	340
2000 .....	142	5 653	1 915	6 514	2 131	2 136	322
2001 .....	151	5 721	1 970	6 811	2 258	2 261	308
2002 .....	155	5 686	2 031	7 198	2 525	2 526	426
2003 .....	154	5 197	1 969	6 750	2 590	2 593	90
2004 .....	152	4 899	1 931	7 203	2 600	2 606	197
2005 .....	159	4 796	1 923	7 402	2 558	2 560	190
2006 .....	147	4 640	1 977	8 219	2 577	2 580	146
2007 .....	133	4 783	2 142	9 081	2 476	2 476	93
<b>35(-35.114/5) Other transport equipment</b>							
1998 .....	998	16 957	4 994	24 702	6 444	6 909	472
1999 .....	965	16 047	4 744	21 521	5 541	6 051	330
2000 .....	1 041	15 095	4 669	21 433	5 969	6 257	242
2001 .....	1 021	15 395	5 220	26 131	6 571	6 898	375
2002 .....	1 053	15 235	5 380	26 157	6 644	7 081	507
2003 .....	1 038	12 798	4 692	20 448	6 112	6 570	549
2004 .....	1 068	11 190	4 564	18 605	6 098	6 222	470
2005 .....	1 061	11 882	4 966	24 798	6 940	6 957	534
2006 .....	1 064	15 217	7 023	36 779	8 671	8 695	1 155
2007 .....	1 052	16 729	8 207	46 185	9 102	9 113	1 481
<b>36-37 MANUFACTURING N.E.C.</b>							
1998 .....	2 033	16 617	4 022	14 413	4 868	4 877	469
1999 .....	1 969	15 690	3 917	14 077	4 946	4 955	442
2000 .....	2 188	15 875	4 258	15 808	5 756	5 762	616
2001 .....	2 116	14 302	3 897	14 468	4 967	4 973	659
2002 .....	2 148	13 248	3 774	13 932	5 101	5 116	428
2003 .....	2 047	12 505	3 664	13 694	5 127	5 139	544
2004 .....	2 008	12 164	3 797	15 305	6 130	6 141	453
2005 .....	1 948	12 017	4 015	16 064	6 180	6 193	512
2006 .....	1 910	12 095	4 261	17 764	6 745	6 763	767
2007 .....	1 787	12 189	4 550	19 606	6 785	6 786	608

## 3 (cont.). Principal figures for local KAUs, by industry division.1998-2007

	Local KAUs	Persons employed	Compen- sation of employees	Production value	Value added		Gross investment
					Market prices	Factor prices	
					NOK Million		
<b>36 Furniture and manufacturing n.e.c.</b>							
1998 .....	1 894	15 598	3 722	12 883	4 476	4 485	445
1999 .....	1 836	14 628	3 578	12 387	4 446	4 454	381
2000 .....	2 016	14 341	3 711	12 836	4 762	4 767	474
2001 .....	1 952	13 245	3 546	12 421	4 383	4 387	391
2002 .....	1 993	12 266	3 424	11 747	4 497	4 510	299
2003 .....	1 897	11 525	3 290	11 623	4 531	4 542	339
2004 .....	1 858	11 145	3 389	12 586	5 090	5 098	230
2005 .....	1 792	10 837	3 501	12 610	4 990	5 001	342
2006 .....	1 750	10 814	3 645	13 314	5 074	5 088	434
2007 .....	1 645	10 775	3 838	14 394	5 432	5 433	304
<b>37 Recycling</b>							
1998 .....	139	1 019	300	1 530	392	393	25
1999 .....	133	1 062	339	1 690	501	502	61
2000 .....	172	1 534	547	2 972	994	995	143
2001 .....	164	1 057	350	2 047	584	586	268
2002 .....	155	982	350	2 185	604	605	129
2003 .....	150	980	373	2 071	595	597	204
2004 .....	150	1 019	408	2 719	1 040	1 043	223
2005 .....	156	1 180	514	3 455	1 190	1 192	170
2006 .....	160	1 281	616	4 449	1 672	1 675	333
2007 .....	142	1 414	711	5 212	1 353	1 353	305

**4 Principal figures per employee for all kind-of-activity units (KAUs) in mining, quarrying and manufacturing. 1998-2007**

	Local KAUs	Production value per employee	Value added per person employed		Share of compensation of employees in average <sup>1</sup>	Gross investment per person employed
			Market prices			
			Factor prices			
NOK 1 000					P.c.	NOK 1000
<b>10,12-37 MANUFACTURING, MINING AND QUARRYING</b>						
1998 .....	22 072	1 505	439	421	71	69
1999 .....	21 131	1 560	467	443	70	58
2000 .....	22 283	1 691	503	476	69	53
2001 .....	21 957	1 789	535	502	69	58
2002 .....	22 610	1 769	541	507	71	67
2003 .....	21 809	1 836	592	555	67	54
2004 .....	21 681	2 076	661	622	64	59
2005 .....	21 171	2 325	715	674	63	64
2006 .....	20 879	2 615	777	740	62	73
2007 .....	19 819	2 889	783	750	65	93
<b>10,12-14 MINING AND QUARRYING</b>						
1998 .....	664	1 373	481	496	61	81
1999 .....	667	1 459	563	564	53	124
2000 .....	706	1 556	589	590	56	136
2001 .....	695	1 723	678	678	52	129
2002 .....	726	1 734	722	723	51	49
2003 .....	714	1 844	691	691	55	119
2004 .....	712	2 081	833	832	52	135
2005 .....	705	2 149	835	834	51	169
2006 .....	685	2 290	859	858	53	138
2007 .....	651	2 607	940	940	54	165
<b>10 Coal and peat</b>						
1998 .....	16	618	201	444	87	51
1999 .....	12	587	165	162	244	263
2000 .....	13	967	-468	-471	-88	832
2001 .....	13	2 096	222	219	237	529
2002 .....	16	2 809	839	836	60	77
2003 .....	13	3 726	1 131	1 125	54	682
2004 .....	14	4 884	2 266	2 246	50	626
2005 .....	15	3 350	1 204	1 191	58	705
2006 .....	17	3 659	995	982	85	180
2007 .....	15	4 911	1 670	1 670	59	171
<b>13 Metal ores</b>						
1998 .....	10	979	320	328	98	57
1999 .....	7	1 049	430	430	70	31
2000 .....	7	1 645	600	600	65	82
2001 .....	5	1 843	829	829	51	73
2002 .....	7	1 688	852	852	49	105
2003 .....	8	1 630	820	820	56	34
2004 .....	7	1 780	888	888	55	87
2005 .....	6	1 849	1 059	1 060	45	176
2006 .....	5	1 894	1 158	1 158	43	254
2007 .....	8	1 808	982	982	54	269
<b>14 Other mining and quarrying</b>						
1998 .....	638	1 488	526	526	56	87
1999 .....	648	1 571	608	609	48	127
2000 .....	686	1 587	661	662	48	93
2001 .....	677	1 682	699	700	48	103
2002 .....	703	1 659	700	700	50	40
2003 .....	693	1 723	645	645	55	85
2004 .....	691	1 886	712	712	53	100
2005 .....	684	2 071	777	777	51	119
2006 .....	663	2 188	809	810	51	120
2007 .....	628	2 432	850	850	53	152
<b>15-37 MANUFACTURING</b>						
1998 .....	21 408	1 507	439	420	71	68
1999 .....	20 464	1 561	466	441	70	57
2000 .....	21 577	1 693	501	474	69	52
2001 .....	21 262	1 790	533	499	70	57
2002 .....	21 884	1 770	539	504	72	67
2003 .....	21 095	1 836	591	553	67	53
2004 .....	20 969	2 076	658	619	64	57
2005 .....	20 466	2 328	713	671	64	62
2006 .....	20 194	2 620	776	738	62	72
2007 .....	19 168	2 894	781	747	65	92

**4 (cont.). Principal figures per employee for all kind-of-activity units (KAUs) in mining, quarrying and manufacturing. 1998-2007**

	Local KAUs	Production value per employee	Value added per person employed		Share of compensation of employees in average <sup>1</sup>	Gross investment per person employed
			Market prices Factor prices			
			NOK 1 000			
<b>15-16 FOOD PRODUCTS; BEVERAGES AND TOBACCO</b>						
1998	2 272	1 985	489	366	72	72
1999	2 209	2 087	537	386	70	64
2000	2 281	2 159	595	436	66	71
2001	2 231	2 326	650	461	65	80
2002	2 297	2 393	681	486	65	79
2003	2 268	2 409	736	528	62	68
2004	2 239	2 603	770	560	61	61
2005	2 237	2 759	815	596	61	58
2006	2 240	2 895	873	665	58	74
2007	2 148	3 131	833	641	65	78
<b>15.1 Meat and meat products</b>						
1998	322	2 198	252	306	85	32
1999	319	2 288	295	345	78	44
2000	325	2 301	313	339	83	52
2001	311	2 654	371	373	78	48
2002	333	2 681	402	405	74	56
2003	343	2 832	413	428	74	45
2004	344	3 092	428	443	75	48
2005	348	3 301	451	455	78	50
2006	349	2 942	371	454	82	50
2007	342	3 180	411	509	82	52
<b>15.2 Fish and fish products</b>						
1998	663	1 787	355	358	65	78
1999	638	1 840	310	313	77	77
2000	657	1 965	350	352	72	81
2001	643	2 145	404	406	67	116
2002	645	2 050	342	343	82	79
2003	627	1 904	399	400	73	74
2004	616	2 269	511	513	61	58
2005	583	2 684	606	608	54	44
2006	558	3 451	912	914	40	98
2007	508	3 849	653	654	60	102
<b>15.5 Dairy products</b>						
1998	102	2 382	294	360	82	68
1999	101	2 367	347	372	82	75
2000	92	2 412	412	427	76	65
2001	87	2 354	403	424	79	66
2002	89	2 714	553	495	77	94
2003	91	2 433	609	526	70	90
2004	90	2 374	490	490	75	86
2005	93	2 535	529	529	73	108
2006	94	2 612	523	523	78	95
2007	103	2 851	613	613	69	88
<b>15.3-4/6-8 Other food products</b>						
1998	1 117	1 741	415	394	67	73
1999	1 088	1 797	484	462	58	49
2000	1 137	1 861	548	527	55	67
2001	1 123	1 912	563	539	55	81
2002	1 151	1 981	615	590	53	85
2003	1 127	2 059	666	638	50	80
2004	1 111	2 202	691	661	51	72
2005	1 137	2 178	707	677	53	53
2006	1 157	2 345	753	715	52	73
2007	1 119	2 523	693	660	60	82
<b>15.9/16 Beverages and tobacco</b>						
1998	68	2 340	1 675	428	69	142
1999	63	2 721	1 722	419	73	106
2000	70	2 852	1 937	559	59	103
2001	67	3 132	2 210	578	61	83
2002	79	3 375	2 335	651	58	98
2003	80	3 423	2 406	661	59	53
2004	78	3 579	2 543	684	59	32
2005	76	3 749	2 677	714	59	63
2006	82	4 029	2 872	753	60	68
2007	76	4 176	2 953	913	56	75

**4 (cont.). Principal figures per employee for all kind-of-activity units (KAUs) in mining, quarrying and manufacturing. 1998-2007**

	Local KAUs	Production value per employee	Value added per person employed		Share of compensation of employees in average <sup>1</sup>	Gross investment per person employed
			Market prices Factor prices			
			NOK 1 000			
<b>17-19 TEXTILES AND TEXTILE PRODUCTS, LEATHER AND LEATHER PRODUCTS</b>						
1998 .....	1 588	697	266	266	78	21
1999 .....	1 485	692	262	263	77	20
2000 .....	1 548	769	274	274	80	10
2001 .....	1 502	818	321	321	72	22
2002 .....	1 514	862	325	326	75	15
2003 .....	1 419	933	355	356	70	28
2004 .....	1 406	940	379	381	68	16
2005 .....	1 360	1 075	426	428	64	17
2006 .....	1 329	1 197	473	473	62	29
2007 .....	1 272	1 303	458	459	69	45
<b>17 Textiles</b>						
1998 .....	854	749	290	291	76	31
1999 .....	808	754	291	291	74	23
2000 .....	842	804	291	292	80	10
2001 .....	829	834	320	321	76	29
2002 .....	826	869	333	334	77	21
2003 .....	756	928	367	368	72	32
2004 .....	747	985	396	398	68	16
2005 .....	710	1 096	444	446	65	12
2006 .....	685	1 207	501	502	62	31
2007 .....	639	1 261	450	450	74	45
<b>18 Wearing apparel; dressing and dyeing of fur</b>						
1998 .....	623	578	222	222	80	3
1999 .....	579	517	194	194	88	13
2000 .....	611	634	234	234	79	10
2001 .....	585	725	325	326	58	7
2002 .....	607	801	301	302	66	-1
2003 .....	591	941	336	336	62	13
2004 .....	589	820	344	345	62	16
2005 .....	586	998	398	398	59	32
2006 .....	592	1 182	427	427	57	27
2007 .....	587	1 387	493	493	57	47
<b>19 Leather and leather products</b>						
1998 .....	111	681	217	217	93	7
1999 .....	98	754	250	250	81	8
2000 .....	95	907	256	257	86	6
2001 .....	88	972	312	312	76	5
2002 .....	81	1 014	326	326	73	6
2003 .....	72	947	298	298	84	38
2004 .....	70	934	337	337	78	7
2005 .....	64	1 181	341	341	81	8
2006 .....	52	1 137	339	339	81	8
2007 .....	46	1 418	373	373	82	21
<b>20 WOOD AND WOOD PRODUCTS</b>						
1998 .....	2 289	1 045	302	303	79	39
1999 .....	2 252	1 065	310	310	77	28
2000 .....	2 358	1 161	340	340	74	21
2001 .....	2 301	1 245	407	408	67	35
2002 .....	2 272	1 175	373	374	74	40
2003 .....	2 153	1 208	385	386	74	55
2004 .....	2 118	1 391	453	454	67	37
2005 .....	2 055	1 460	475	475	68	48
2006 .....	2 029	1 533	499	500	67	50
2007 .....	1 828	1 759	528	528	69	60
<b>21 PULP, PAPER AND PAPER PRODUCTS</b>						
1998 .....	147	1 993	577	580	57	211
1999 .....	129	2 066	604	606	55	144
2000 .....	125	2 291	714	715	54	102
2001 .....	123	2 352	808	808	48	80
2002 .....	119	2 012	577	577	67	75
2003 .....	118	2 068	577	578	68	11
2004 .....	114	2 525	606	606	68	111
2005 .....	114	2 558	579	579	74	105
2006 .....	110	2 815	696	697	67	84
2007 .....	102	3 258	665	666	72	174



**4 (cont.). Principal figures per employee for all kind-of-activity units (KAUs) in mining, quarrying and manufacturing. 1998-2007**

	Local KAUs	Production value per employee	Value added per person employed		Share of compensation of employees in average <sup>1</sup>	Gross investment per person employed
			Market prices Factor prices			
			NOK 1 000			
<b>22 PUBLISHING AND PRINTING ETC.</b>						
1998 .....	3 721	842	338	343	80	61
1999 .....	3 368	911	367	372	77	44
2000 .....	3 588	989	400	404	77	30
2001 .....	3 573	1 067	430	435	76	20
2002 .....	3 727	1 092	458	465	73	16
2003 .....	3 497	1 169	508	516	70	27
2004 .....	3 370	1 302	559	568	68	19
2005 .....	3 237	1 546	641	651	70	40
2006 .....	3 138	1 622	672	682	70	46
2007 .....	2 916	1 712	689	690	75	23
<b>23-24 REFINED PETROLEUM PRODUCTS AND CHEMICAL PRODUCTS</b>						
1998 .....	316	3 323	778	780	50	257
1999 .....	288	3 668	818	819	49	228
2000 .....	300	4 939	911	912	48	164
2001 .....	300	4 786	944	945	51	177
2002 .....	306	4 339	853	853	59	197
2003 .....	300	4 593	1 057	1 058	47	154
2004 .....	303	5 490	1 345	1 346	41	195
2005 .....	288	6 631	1 503	1 504	37	262
2006 .....	289	7 513	1 588	1 590	38	252
2007 .....	287	8 004	1 588	1 590	40	321
<b>24.1 Refined petroleum products and basic chemicals</b>						
1998 .....	114	4 145	872	873	46	364
1999 .....	110	4 717	931	932	44	323
2000 .....	120	6 626	1 023	1 023	44	199
2001 .....	121	6 538	1 055	1 056	48	223
2002 .....	109	5 785	821	822	62	270
2003 .....	107	6 246	1 178	1 179	43	199
2004 .....	108	7 535	1 584	1 585	36	238
2005 .....	98	9 085	1 787	1 789	33	359
2006 .....	101	10 295	1 749	1 751	35	327
2007 .....	97	11 118	1 757	1 759	38	457
<b>24.2-7 Other chemical products</b>						
1998 .....	202	2 050	633	635	61	92
1999 .....	178	2 133	653	655	60	90
2000 .....	180	2 406	744	746	56	110
2001 .....	179	2 440	796	798	57	115
2002 .....	197	2 446	894	894	55	102
2003 .....	193	2 380	896	896	55	93
2004 .....	195	2 425	987	989	51	130
2005 .....	190	2 599	1 037	1 037	51	103
2006 .....	188	2 990	1 327	1 328	43	130
2007 .....	190	3 059	1 320	1 322	44	105
<b>25 RUBBER AND PLASTIC PRODUCTS</b>						
1998 .....	488	1 092	381	382	75	67
1999 .....	468	1 090	399	400	74	80
2000 .....	490	1 131	379	380	81	61
2001 .....	483	1 224	420	422	76	26
2002 .....	465	1 235	438	440	74	35
2003 .....	465	1 268	470	471	72	51
2004 .....	471	1 420	484	485	73	42
2005 .....	448	1 557	575	576	66	44
2006 .....	441	1 654	597	598	67	74
2007 .....	407	1 845	613	613	69	52

4 (cont.). Principal figures per employee for all kind-of-activity units (KAUs) in mining, quarrying and manufacturing.  
1998-2007

	Local KAUs	Production value per employee	Value added per person employed		Share of compensation of employees in average <sup>1</sup>	Gross investment per person employed
			Market prices			
			Factor prices			
NOK 1 000					P.c.	NOK 1000
<b>26 OTHER NON-METALLIC MINERAL PRODUCTS</b>						
1998 .....	1 037	1 304	454	454	66	77
1999 .....	984	1 356	470	470	66	101
2000 .....	1 015	1 440	508	508	64	81
2001 .....	995	1 495	502	502	69	55
2002 .....	1 018	1 466	526	526	66	61
2003 .....	971	1 505	532	532	67	45
2004 .....	975	1 707	595	595	65	88
2005 .....	953	1 853	653	653	62	72
2006 .....	947	2 029	687	688	63	86
2007 .....	881	2 300	759	760	63	366
<b>27 BASIC METALS</b>						
1998 .....	197	2 721	674	674	54	105
1999 .....	182	2 831	692	692	54	90
2000 .....	207	3 470	898	898	44	115
2001 .....	205	3 430	865	865	46	204
2002 .....	193	3 162	691	691	60	438
2003 .....	189	3 103	779	780	52	221
2004 .....	193	4 162	1 071	1 071	44	186
2005 .....	180	4 436	1 032	1 032	46	136
2006 .....	173	5 659	1 262	1 263	42	132
2007 .....	157	6 878	1 266	1 266	42	185
<b>28 METAL PRODUCTS, EXCEPT MACHINERY AND EQUIPMENT</b>						
1998 .....	2 272	941	372	373	77	42
1999 .....	2 211	954	390	391	75	23
2000 .....	2 360	958	382	383	79	23
2001 .....	2 343	1 003	397	398	81	27
2002 .....	2 431	1 040	436	437	76	25
2003 .....	2 438	1 015	438	439	76	20
2004 .....	2 489	1 142	483	483	73	29
2005 .....	2 412	1 314	533	534	71	25
2006 .....	2 479	1 451	582	582	71	41
2007 .....	2 490	1 616	610	610	72	37
<b>29 MACHINERY AND EQUIPMENT N.E.C</b>						
1998 .....	2 529	1 256	428	429	76	38
1999 .....	2 461	1 204	444	445	76	31
2000 .....	2 639	1 231	412	413	84	31
2001 .....	2 618	1 477	496	496	77	32
2002 .....	2 703	1 511	540	541	73	28
2003 .....	2 650	1 509	560	561	72	25
2004 .....	2 651	1 525	565	566	74	41
2005 .....	2 599	1 755	621	622	73	32
2006 .....	2 510	2 247	756	756	67	51
2007 .....	2 388	2 790	821	821	66	60
<b>30-33 ELECTRICAL AND OPTICAL EQUIPMENT</b>						
1998 .....	1 277	1 372	482	483	73	46
1999 .....	1 236	1 490	528	529	72	44
2000 .....	1 179	1 571	521	522	78	44
2001 .....	1 173	1 653	501	502	86	41
2002 .....	1 364	1 550	517	518	84	31
2003 .....	1 268	1 603	563	564	78	23
2004 .....	1 287	1 783	631	632	75	32
2005 .....	1 288	1 980	717	718	71	55
2006 .....	1 256	2 248	765	766	72	51
2007 .....	1 191	2 497	836	836	69	70

**4 (cont.). Principal figures per employee for all kind-of-activity units (KAUs) in mining, quarrying and manufacturing. 1998-2007**

	Local KAUs	Production value per employee	Value added per person employed		Share of compensation of employees in average <sup>1</sup>	Gross investment per person employed
			Market prices Factor prices			
			NOK 1 000			
<b>30 Office machinery and computers</b>						
1998	56	2 353	487	488	76	23
1999	57	2 367	530	533	82	27
2000	53	2 251	325	334	134	20
2001	49	2 532	479	491	92	48
2002	51	1 980	202	202	221	22
2003	44	2 372	781	792	64	4
2004	42	2 195	773	777	68	18
2005	37	2 725	894	902	63	63
2006	24	3 352	647	652	100	34
2007	15	5 413	1 020	1 020	74	29
<b>31 Electrical machinery and apparatus n.e.c</b>						
1998	542	1 305	480	482	72	56
1999	522	1 335	427	427	85	62
2000	544	1 295	441	442	82	40
2001	545	1 452	470	470	82	46
2002	537	1 445	495	496	81	35
2003	532	1 483	511	512	77	25
2004	521	1 767	606	607	71	27
2005	516	1 902	667	667	70	65
2006	486	2 199	730	731	68	57
2007	443	2 530	789	789	68	40
<b>32 Radio, television, communication equipment</b>						
1998	153	1 300	499	500	72	29
1999	146	1 647	729	730	53	30
2000	145	2 101	708	709	63	70
2001	145	1 869	522	523	87	53
2002	149	1 638	492	493	89	36
2003	146	1 798	581	582	79	29
2004	151	2 045	666	668	75	37
2005	138	2 256	806	808	67	64
2006	131	2 636	834	834	71	73
2007	128	2 721	1 000	1 000	55	206
<b>33 Medical, precision and optical instruments</b>						
1998	526	1 402	473	473	76	46
1999	511	1 473	552	554	72	29
2000	437	1 458	497	499	87	30
2001	434	1 637	523	527	90	22
2002	627	1 573	584	585	81	24
2003	546	1 576	600	601	80	18
2004	573	1 634	633	635	79	35
2005	597	1 888	717	718	74	39
2006	615	2 069	768	768	76	33
2007	605	2 305	797	797	78	32
<b>35.114/5 OIL PLATFORMS</b>						
1998	113	1 798	434	434	88	33
1999	124	1 618	469	470	85	14
2000	116	1 315	458	461	91	10
2001	127	1 418	463	464	91	18
2002	119	1 528	534	534	89	25
2003	120	1 689	603	604	83	3
2004	125	1 818	594	595	88	14
2005	127	2 126	673	673	87	20
2006	132	2 586	773	774	81	35
2007	129	2 727	768	769	82	40
<b>34-35(-35.114/5) TRANSPORT EQUIPMENT</b>						
1998	1 129	1 380	381	403	73	41
1999	1 098	1 283	349	373	80	31
2000	1 183	1 347	390	404	78	27
2001	1 172	1 560	418	434	79	32
2002	1 208	1 594	438	459	77	45
2003	1 192	1 511	484	509	73	35
2004	1 220	1 604	541	549	74	42
2005	1 220	1 931	570	571	72	43
2006	1 211	2 266	566	568	80	66
2007	1 185	2 569	538	539	89	73

4 (cont.). Principal figures per employee for all kind-of-activity units (KAUs) in mining, quarrying and manufacturing.  
1998-2007

	Local KAUs	Production value per employee	Value added per person employed		Share of compensation of employees in average <sup>1</sup>	Gross investment per person employed
			Market prices			
			Factor prices			
NOK 1 000					P.c.	NOK 1000
<b>34 Motor vehicles, trailers and semitrailers</b>						
1998	131	1 105	385	387	78	90
1999	133	1 110	358	360	87	62
2000	142	1 152	377	378	90	57
2001	151	1 191	395	395	87	54
2002	155	1 266	444	444	80	75
2003	154	1 299	498	499	76	17
2004	152	1 470	531	532	74	40
2005	159	1 543	533	534	75	40
2006	147	1 771	555	556	77	32
2007	133	1 899	518	518	87	19
<b>35(-35.114/5) Other transport equipment</b>						
1998	998	1 457	380	407	72	28
1999	965	1 341	345	377	78	21
2000	1 041	1 420	395	414	75	16
2001	1 021	1 697	427	448	76	24
2002	1 053	1 717	436	465	76	33
2003	1 038	1 598	478	513	71	43
2004	1 068	1 663	545	556	73	42
2005	1 061	2 087	584	586	71	45
2006	1 064	2 417	570	571	81	76
2007	1 052	2 761	544	545	90	89
<b>36-37 MANUFACTURING N.E.C.</b>						
1998	2 033	867	293	294	82	28
1999	1 969	897	315	316	79	28
2000	2 188	996	363	363	74	39
2001	2 116	1 012	347	348	78	46
2002	2 148	1 052	385	386	74	32
2003	2 047	1 095	410	411	71	43
2004	2 008	1 258	504	505	62	37
2005	1 948	1 337	514	515	65	43
2006	1 910	1 469	558	559	63	63
2007	1 787	1 608	557	557	67	50
<b>36 Furniture and manufacturing n.e.c.</b>						
1998	1 894	826	287	288	83	29
1999	1 836	847	304	304	80	26
2000	2 016	895	332	332	78	33
2001	1 952	938	331	331	81	30
2002	1 993	958	367	368	76	24
2003	1 897	1 009	393	394	72	29
2004	1 858	1 129	457	457	66	21
2005	1 792	1 164	460	461	70	32
2006	1 750	1 231	469	471	72	40
2007	1 645	1 336	504	504	71	28
<b>37 Recycling</b>						
1998	139	1 501	385	386	76	24
1999	133	1 592	472	472	68	57
2000	172	1 937	648	649	55	93
2001	164	1 937	553	554	60	253
2002	155	2 225	615	616	58	132
2003	150	2 113	607	609	63	209
2004	150	2 668	1 021	1 023	39	218
2005	156	2 928	1 009	1 010	43	144
2006	160	3 473	1 305	1 307	37	260
2007	142	3 686	957	957	53	215

<sup>1</sup>Share of compensation of employees as share of total value added.

## 5 Principal figures for local KAUs by industry subclass. 2007

Industry subclass	Local KAUs	Persons employed	Compensation of employees	Production value	Value added		Gross investment
					Market prices	Factor prices	
NOK Million							
10,12-37 MANUFACTURING, MINING AND QUARRYING .....	19 819	275 944	134 846	797 280	216 197	206 904	25 654
10,12-14 MINING AND QUARRYING .....	651	4 533	2 299	11 817	4 260	4 260	748
10 Coal and peat .....	15	427	420	2 097	713	713	73
10.1 Hard coal .....	2	407	:	:	:	:	:
10.3 Peat .....	13	20	:	:	:	:	:
13 Metal ores .....	8	429	229	776	421	421	115
13.1 Iron ores .....	3	156	71	218	107	107	20
13.2 Non-ferrous metal ores .....	5	273	158	558	314	314	96
14 Other mining and quarrying .....	628	3 677	1 650	8 944	3 126	3 126	559
14.1 Stone .....	174	1 041	454	2 338	863	863	94
14.11 Stone for construction .....	114	560	253	1 133	499	499	91
14.12 Limestone, gypsum and chalk .....	24	306	145	954	284	284	-3
14.13 Slate .....	36	175	56	251	79	79	6
14.2 Sand and clay .....	429	2 116	943	5 114	1 748	1 748	388
14.21 Operation of gravel and sand pits .....	429	2 116	943	5 114	1 748	1 748	388
14.3 Chemical and fertilizer minerals .....	7	244	124	870	293	293	25
14.5 Other mining and quarrying .....	18	276	128	622	223	223	52
15-37 MANUFACTURING .....	19 168	271 411	132 547	785 463	211 937	202 643	24 906
15-16 FOOD PRODUCTS; BEVERAGES AND TOBACCO .....	2 148	49 111	20 421	153 759	40 904	31 495	3 836
15.1 Meat and meat products .....	342	12 165	5 062	38 683	5 002	6 196	634
15.11 Production and preserving of meat .....	143	6 075	2 783	20 915	2 120	2 121	279
15.12 Production and preserving of poultry meat .....	15	785	279	2 690	331	331	91
15.13 Meat and poultry meat products .....	184	5 305	1 999	15 078	2 551	3 744	264
15.2 Fish and fish products .....	508	8 837	3 466	34 011	5 773	5 779	900
15.201 Drying and salting of fish .....	147	1 849	690	7 631	1 054	1 057	262
15.202 Freezing of fish, fish fillets, crustaceans and molluscs .....	102	3 964	1 623	16 368	3 001	3 002	253
15.203 Canning of fish and fish products .....	9	184	79	376	123	123	6
15.209 Other processing and preserving of fish and fish products .....	250	2 840	1 074	9 636	1 596	1 596	379
15.3 Fruit and vegetables .....	79	1 660	669	3 845	1 151	1 121	45
15.31 Potatoes .....	29	623	285	1 466	463	463	61
15.32 Fruit and vegetable juice .....	10	152	73	513	116	106	2
15.33 Fruit and vegetables n.e.c. ....	40	885	311	1 867	572	552	-18
15.4 Vegetable and animal oil and fats .....	38	666	330	3 293	766	766	125
15.41 Crude oils and fats .....	25	368	193	2 210	406	406	90
15.411 Crude fish oils and fats .....	23	311	:	:	:	:	:
15.419 Other crude oils and fats .....	2	57	:	:	:	:	:
15.42 Refined oils and fats .....	7	14	6	22	6	6	1
15.421 Refined oils from animals .....	4	5	1	15	4	4	1
15.422 Refined oils from vegetables .....	3	9	5	8	2	2	0
15.43 Margarine and similar edible fats .....	6	284	131	1 061	354	354	34
15.5 Dairy products .....	103	6 079	2 559	17 333	3 724	3 724	535
15.51 Dairies and cheese making .....	92	5 084	2 105	15 637	3 130	3 130	475
15.52 Ice cream .....	11	995	454	1 696	595	595	60
15.6 Grain mill products, starchers and starch products .....	63	697	332	2 947	682	705	42
15.61 Grain mill products .....	61	645	:	:	:	:	:
15.62 Starches and starch products .....	2	52	:	:	:	:	:

## 5 (cont.) Principal figures for local KAUs by industry subclass. 2007

Industry subclass	Local KAUs	Persons employed	Compensation of employees	Production value	Value added		Gross investment
					Market prices	Factor prices	
NOK Million							
15.7 Animal feeds .....	110	1 896	1 005	14 816	2 496	2 508	637
15.71 Feeds for farm animals .....	97	1 808	973	14 612	2 450	2 462	594
15.72 Prepared pet foods .....	13	88	32	203	46	46	43
15.8 Other food products .....	829	12 183	4 466	18 254	6 757	6 194	547
15.81 Bread, fresh pastry goods and cakes .....	661	7 882	2 539	8 027	2 813	2 814	255
15.82 Rusks and biscuits, preserved pastry goods and cakes .....	19	343	143	992	306	306	33
15.84 Cocoa, chocolate and sugar confectionary .....	28	1 532	644	3 587	1 804	1 241	-19
15.85 Macaroni, noodles, couscous and similar farinaceous .....	4	24	7	17	2	2	0
15.86 Tea and coffee .....	14	265	152	1 436	396	396	64
15.87 Condiments and seasonings .....	15	546	278	1 255	494	494	76
15.88 Homogenised food preparations and dietetic food .....	19	253	96	442	118	118	41
15.89 Other food products n.e.c. ....	68	1 336	606	2 497	824	825	98
15.9/16 Beverages and tobacco .....	76	4 928	2 532	20 578	14 553	4 501	371
15.9 Beverages .....	75	4 671	:	:	:	:	:
15.91 Distilled potable alcoholic beverages .....	2	203	140	604	177	177	14
15.92 Ethyl alcohol from fermented materials .....	3	12	7	82	37	37	0
15.93 Wines .....	2	2	:	:	:	:	:
15.94 Cider and other fruit wines .....	4	4	0	5	-1	-1	0
15.96 Beer .....	20	2 576	1 360	9 517	6 824	2 509	175
15.98 Mineral waters and soft drinks .....	44	1 874	803	4 380	1 953	1 255	176
16 Tobacco products .....	1	257	:	:	:	:	:
17-19 TEXTILES AND TEXTILE PRODUCTS, LEATHER AND LEATHER PRODUCTS .....	1 272	5 732	1 826	7 470	2 627	2 628	256
17 Textiles .....	639	3 886	1 300	4 901	1 749	1 749	176
17.1 Textile fibres .....	14	265	82	232	96	96	3
17.12 Woollen-type fibres .....	10	146	43	120	50	50	-1
17.13 Worsted-type fibres .....	2	107	:	:	:	:	:
17.17 Other textile fibres .....	2	12	:	:	:	:	:
17.2 Textile weaving .....	39	281	87	248	97	97	9
17.21 Cotton-type weaving .....	5	10	:	:	:	:	:
17.22 Woollen-type weaving .....	1	96	:	:	:	:	:
17.23 Worsted-type weaving .....	9	109	32	91	37	37	4
17.25 Other textile weaving .....	24	66	18	64	16	16	3
17.3 Finishing of textiles .....	63	260	89	315	111	111	4
17.4 Made-up textile articles, except apparel .....	292	1 212	382	1 530	547	547	24
17.401 Household linens .....	124	440	127	520	183	183	9
17.409 Other made-up textiles articles, except apparel ..	168	772	255	1 010	364	364	15
17.5 Other textiles .....	160	1 493	537	2 218	765	765	129
17.51 Carpets and rugs .....	10	37	13	30	16	16	0
17.52 Cordage, rope, twine and netting .....	84	1 027	375	1 670	572	573	117
17.53 Non-wovens and articles made from non-wovens except apparel .....	8	58	18	53	21	21	5
17.54 Other textiles n.e.c. ....	58	371	131	466	156	156	7
17.6 Knitted and crocheted fabrics .....	14	38	13	60	13	13	-1
17.7 Knitted and crocheted articles .....	57	337	111	298	120	120	8
17.71 Knitted and crocheted hosiery .....	3	62	18	38	22	22	0
17.72 Knitted and crocheted pullovers, cardigans and similar articles .....	54	275	92	260	98	98	8
18 Wearing apparel; dressing and dyeing of fur .....	587	1 579	445	2 190	779	779	74
18.1 Leather clothes .....	7	10	1	6	2	2	0
18.2 Other wearing apparel and accessories .....	547	1 438	414	2 058	765	765	73
18.21 Workwear .....	20	229	84	421	188	188	5
18.22 Other outerwear .....	371	578	91	307	138	138	3
18.23 Underwear .....	14	124	43	197	69	69	4

## 5 (cont.). Principal figures for local KAUs by industry subclass. 2007

Industry subclass	Local KAUs	Persons employed	Compensation of employees	Production value	Value added		Gross investment
					Market prices	Factor prices	
NOK Million							
18.24 Other wearing apparel and accessories .....	142	507	195	1 134	369	369	61
18.3 Dressing and dyeing of fur; articles of fur .....	33	131	30	126	12	12	1
19 Leather and leather products .....	46	267	81	379	100	100	6
19.1 Tanning and dressing leather .....	4	100	35	141	32	32	0
19.2 Luggage, handbags and the like, saddlery and harness .....	28	41	10	36	16	16	0
19.3 Footwear .....	14	126	37	202	52	52	5
20 WOOD AND WOOD PRODUCTS	1 828	16 440	6 018	28 926	8 683	8 682	987
20.1 Sawmilling and planing of wood, impregnation of wood .....	735	4 480	1 592	10 500	2 909	2 910	514
20.101 Sawmilling and planing of wood	718	4 288	1 515	9 926	2 755	2 756	488
20.102 Impregnation of wood ..	17	192	76	574	154	154	25
20.2 Veneer sheets, plywood, laminboard and other panels and boards .....	24	1 183	500	2 582	683	686	134
20.3 Builders' carpentry and joinery	711	9 759	3 660	14 635	4 688	4 683	311
20.301 Wooden prefabricated buildings	150	2 652	1 067	4 989	1 402	1 402	75
20.302 Other builders' carpentry and joinery	561	7 107	2 593	9 646	3 286	3 281	236
20.4 Wooden containers .....	75	411	133	631	204	204	18
20.5 Other products of wood, articles of cork, straw and plaiting materials .....	283	607	134	578	200	200	11
20.51 Other products of wood ..	275	599	134	575	198	198	11
20.52 Articles of cork, straw and plaiting materials	8	8	0	4	1	1	1
21 PULP, PAPER AND PAPER PRODUCTS	102	6 169	2 948	20 098	4 100	4 107	1 075
21.1 Pulp, paper and paperboard	27	4 063	2 024	16 903	3 051	3 058	953
21.11 Pulp .....	9	928	478	3 348	796	798	248
21.111 Mechanical pulp .....	6	154	79	613	160	161	21
21.112 Chemical processed pulp	3	774	400	2 736	636	637	227
21.12 Paper and paperboard ..	18	3 135	1 545	13 555	2 255	2 260	705
21.2 Articles of paper and paperboard	75	2 106	924	3 195	1 049	1 049	123
21.21 Corrugated paper and paperboard and containers of paper and paperboards	30	1 341	583	2 087	602	602	54
21.22 Household and sanitary goods and toilet requisites .....	2	123	:	:	:	:	:
21.23 Paper stationery .....	9	211	87	262	124	124	5
21.24 Wallpaper .....	3	7	:	:	:	:	:
21.25 Other articles of paper and paperboard n.e.c.	31	424	204	673	243	244	53
22 PUBLISHING AND PRINTING ETC.	2 916	25 194	13 113	43 143	17 348	17 396	574
22.1 Publishing .....	1 460	16 878	9 523	31 225	12 526	12 573	101
22.11 Books .....	409	3 019	1 693	6 401	2 702	2 702	80
22.12 Newspapers .....	287	9 852	5 732	16 597	6 988	7 030	-47
22.13 Journals and periodicals	305	3 094	1 749	6 844	2 435	2 441	52
22.14 Sound recordings .....	197	280	92	501	123	123	4
22.15 Other publishing .....	262	633	256	883	277	277	12
22.2 Printing etc. ....	1 394	8 211	3 555	11 828	4 778	4 778	470
22.21 Printing of newspapers ..	52	1 279	775	2 750	1 163	1 163	210
22.22 Printing n.e.c. ....	742	5 044	2 093	6 942	2 726	2 726	204
22.23 Bookbinding and finishing	32	490	188	350	188	188	24
22.24 Composition and plate-making	83	201	69	279	88	88	-4
22.25 Other activities related to printing	485	1 197	430	1 508	614	614	37
22.3 Reproduction of recorded media	62	105	36	90	45	45	3
22.31 Sound recording .....	29	36	12	29	15	15	1
22.32 Video recording .....	17	59	20	50	25	25	3
22.33 Computer media .....	16	10	3	10	4	4	0



## 5 (cont.). Principal figures for local KAUs by industry subclass. 2007

Industry subclass	Local KAUs	Persons employed	Compensation of employees	Production value	Value added		Gross investment
					Market prices	Factor prices	
NOK Million							
23-24 REFINED PETROLEUM PRODUCTS AND CHEMICAL PRODUCTS .....	287	14 849	9 379	118 847	23 584	23 613	4 766
23 Coal and refined petroleum products	13	1 147	:	:	:	:	:
23.1 Coke oven products .....	1	2	:	:	:	:	:
23.2 Refined petroleum products	12	1 145	:	:	:	:	:
24 Chemicals and chemical products	274	13 702	:	:	:	:	:
24.1 Basic chemicals .....	84	7 964	:	:	:	:	:
24.11 Industrial gases .....	9	532	335	2 030	915	915	134
24.12 Dyes and pigments .....	3	291	:	:	:	:	:
24.13 Other inorganic basic chemicals	29	2 568	1 588	11 915	4 317	4 326	1 754
24.131 Carbides .....	5	460	244	1 010	418	418	244
24.139 Other inorganic basic chemicals n.e.c.	24	2 108	1 344	10 905	3 899	3 908	1 510
24.14 Other organic basic chemicals	19	1 373	899	7 706	2 458	2 464	514
24.15 Fertilizers and nitrogen compounds	11	1 925	1 272	7 115	1 061	1 061	351
24.16 Plastics in primary forms	13	1 275	816	8 521	1 437	1 437	90
24.2 Pesticides and other agro-chemical products	6	4	0	10	0	0	0
24.3 Paints, varnishes and similar coatings, printing ink and mastics .....	32	1 109	664	3 104	934	934	32
24.301 Paints, varnishes and similar coatings	27	1 056	634	2 965	876	876	31
24.302 Printing ink and mastics	5	53	30	139	57	57	1
24.4 Pharmaceuticals, medicinal chemicals and botanical products .....	35	2 987	1 761	9 206	4 648	4 650	314
24.41 Basic pharmaceuticals products	11	575	408	1 721	1 361	1 361	150
24.42 Pharmaceuticals preparations	24	2 412	1 353	7 485	3 287	3 289	164
24.5 Soap and detergents, cleaning and polishing prep., perfumes and toilet prep.	64	744	335	1 933	598	598	69
24.51 Soap and detergents, cleaning and polishing preparations .....	39	611	279	1 441	444	444	59
24.52 Perfumes and toilet preparations	25	133	56	492	153	153	10
24.6 Other chemical products .	53	894	547	3 302	1 396	1 407	185
24.61 Explosives .....	5	57	22	325	34	34	4
24.62 Glues and gelatine .....	1	12	:	:	:	:	:
24.63 Essential oils .....	2	2	:	:	:	:	:
24.64 Photographic chemical material	1	6	:	:	:	:	:
24.65 Prepared unrecorded media	9	25	10	27	7	7	1
24.66 Other chemical products n.e.c.	35	792	509	2 919	1 349	1 360	181
25 RUBBER AND PLASTIC PRODUCTS	407	5 698	2 394	10 515	3 495	3 495	298
25.1 Rubber products .....	47	712	318	972	458	458	35
25.12 Retreading and rebuilding of rubber tyres	13	121	49	158	53	53	5
25.13 Other rubber products ...	34	591	269	814	405	405	30
25.2 Plastic products .....	360	4 986	2 077	9 542	3 037	3 037	263
25.21 Plastic plates, sheets, tubes and profiles	88	1 517	639	3 286	989	989	139
25.22 Plastic packing goods ...	59	1 340	562	2 648	812	812	57
25.23 Builders' ware of plastic .	61	928	404	1 798	577	577	72
25.24 Other rubber products ...	152	1 201	472	1 810	659	659	-5
26 OTHER NON-METALLIC MINERAL PRODUCTS	881	10 915	5 242	25 108	8 287	8 295	3 998
26.1 Glass and glass products	124	1 892	826	3 215	1 175	1 175	233
26.11 Manufacture of flat glass	10	136	50	174	71	71	4
26.12 Shaping and processing of flat glass	44	832	340	1 226	468	468	41
26.13 Hollow glass .....	47	270	100	255	122	122	9
26.14 Glass fibres .....	15	634	328	1 542	513	513	177
26.15 Other glass including technical glassware	8	20	6	19	1	1	2



## 5 (cont.). Principal figures for local KAUs by industry subclass. 2007

Industry subclass	Local KAUs	Persons employed	Compensation of employees	Production value	Value added		Gross investment
					Market prices	Factor prices	
NOK Million							
26.2 Non-refractory ceramic goods other than for construction purposes; refractory ceramic products	146	651	220	925	333	333	15
26.21 Ceramic household and ornamental articles	116	432	126	312	170	170	7
26.22 Ceramic sanitary fixtures	5	116	56	486	120	120	3
26.23 Ceramic insulators and insulating fittings	1	53	:	:	:	:	:
26.24 Other technical ceramic products	2	4	:	:	:	:	:
26.25 Other ceramic products	13	5	0	2	1	1	0
26.26 Refractory ceramic products	9	41	16	74	20	20	3
26.5 Cement, lime and plaster	9	467	259	1 690	658	658	184
26.51 Cement	3	425	240	1 586	625	625	37
26.52 Lime	6	42	20	104	33	33	148
26.6 Articles of concrete, cement and plaster	349	4 961	2 445	12 268	4 032	4 037	642
26.61 Concrete products for construction purposes	147	3 614	1 765	7 193	2 618	2 624	394
26.62 Plaster products for construction purposes	3	191	108	633	186	186	41
26.63 Ready-mixed concrete	167	994	498	4 034	1 104	1 104	184
26.64 Mortars	11	57	29	152	54	54	6
26.65 Fibre cement	2	42	:	:	:	:	:
26.66 Other articles of concrete, cement and plaster	19	63	:	:	:	:	:
26.7 Cutting, sharpening and finishing of stone	169	752	289	983	392	392	24
26.8 Other non-metallic mineral products	81	2 159	1 186	5 958	1 686	1 688	2 897
26.81 Abrasive products	2	45	:	:	:	:	:
26.82 Other non-metallic mineral products n.e.c.	79	2 114	:	:	:	:	:
27 BASIC METALS	157	11 848	6 324	81 489	15 001	15 001	2 192
27.1 Basic iron, steel and ferro-alloys (ecsc)	25	2 332	1 177	12 597	3 554	3 554	274
27.2 Iron and steel tubes	45	436	207	921	275	275	41
27.21 Cast iron tubes	3	55	26	97	37	37	8
27.22 Steel tubes	42	381	181	824	238	238	33
27.3 Other first proc. of iron and steel and prod. of non-ecsc ferro-alloys	3	5	1	2	2	2	0
27.33 Cold forming and folding	3	5	1	2	2	2	0
27.4 Basic precious and non-ferrous metals	36	7 272	4 082	65 018	10 079	10 079	1 660
27.41 Precious metals	4	51	:	:	:	:	:
27.42 Aluminium	25	6 231	3 514	37 290	8 764	8 764	1 468
27.421 Primary aluminium	11	4 849	2 831	30 904	7 859	7 859	1 257
27.422 First transformation of aluminium	14	1 382	683	6 386	905	905	211
27.43 Lead, zinc and tin	3	440	222	3 406	749	749	47
27.44 Copper	1	1	:	:	:	:	:
27.45 Other non-ferrous metals	3	549	320	24 135	523	523	140
27.5 Casting of metals	48	1 803	858	2 951	1 092	1 092	217
27.51 Iron	15	954	472	1 281	549	549	103
27.52 Steel	6	270	146	554	190	190	34
27.53 Light metals	14	248	97	324	144	144	73
27.54 Other non-ferrous metals	13	331	143	792	208	208	8
28 METAL PRODUCTS, EXCEPT MACHINERY AND EQUIPMENT	2 490	23 383	10 250	37 794	14 262	14 264	869
28.1 Fabricated metal products, except machinery and equipment	500	8 636	3 837	13 676	5 212	5 212	237
28.11 Structural metal products	353	6 953	3 111	10 931	4 193	4 193	197
28.12 Metal structures and parts of structures	147	1 683	727	2 746	1 019	1 019	40
28.2 Tanks, reservoirs and containers; central heating radiators and boilers	25	312	146	576	207	207	24
28.21 Tanks, reservoirs and containers of metal	22	269	127	508	171	171	24
28.22 Central heating radiators and boilers	3	43	20	68	36	36	0
28.3 Steam generators, except central heating hot water boilers	5	236	117	363	149	149	9
28.4 Forging, pressing, stamping and roll forming of metal; powder metallurgy	34	240	85	263	112	112	8

## 5 (cont.). Principal figures for local KAUs by industry subclass. 2007

Industry subclass	Local KAUs	Persons employed	Compensation of employees	Production value	Value added		Gross investment
					Market prices	Factor prices	
NOK Million							
28.5 Treatment and coating of metals; general mechanical engineering .....	1 415	7 455	3 109	9 774	4 287	4 289	339
28.51 Treatment and coating of metals .....	346	2 228	946	2 846	1 221	1 221	91
28.52 General mechanical engineering .....	1 069	5 227	2 163	6 928	3 066	3 068	248
28.6 Cutlery, tools and general hardware .....	113	1 421	643	2 348	954	954	29
28.61 Cutlery .....	10	122	41	130	54	54	1
28.62 Tools .....	41	211	82	276	137	137	6
28.63 Locks and hinges .....	62	1 088	520	1 942	763	763	22
28.7 Other fabricated metal products .....	398	5 083	2 312	10 794	3 341	3 341	223
28.71 Steel drums and similar containers .....	6	234	:	:	:	:	:
28.72 Light metal packaging .....	2	98	:	:	:	:	:
28.73 Wire products .....	21	471	232	1 495	385	385	65
28.74 Fasteners, screw machine products, chain and springs .....	18	402	168	715	269	269	17
28.75 Other fabricated metal products n.e.c. ....	351	3 878	1 767	8 096	2 497	2 497	134
29 MACHINERY AND EQUIPMENT N.E.C .....	2 388	26 102	14 181	72 813	21 435	21 439	1 566
29.1 Machinery for the prod./use of mech. power, exc. aircraft, vehicle engines .....	200	5 909	3 589	19 178	5 588	5 588	707
29.11 Engines and turbines .....	93	2 581	1 574	6 611	1 455	1 455	211
29.111 Marine engines and parts .....	40	1 274	766	3 281	830	830	128
29.119 Other engines and turbines and parts .....	53	1 307	808	3 329	625	625	82
29.12 Pumps and compressors .....	72	2 445	1 558	10 653	3 359	3 359	387
29.13 Taps and valves .....	24	570	306	1 207	542	542	70
29.14 Bearings, gears, gearing and driving elements ....	11	313	151	708	233	233	40
29.2 Other general purpose machinery .....	970	8 766	4 403	18 648	6 110	6 113	399
29.21 Furnaces and furnace burners .....	19	302	149	537	233	233	8
29.22 Lifting and handling equipment .....	199	3 863	2 196	10 986	3 071	3 071	223
29.221 Marine lifting and handling equipment .....	58	1 946	1 221	7 344	1 753	1 753	144
29.229 Other lifting and handling equipment .....	141	1 917	975	3 642	1 318	1 318	79
29.23 Non-domestic cooling and ventilation equipment .	85	1 218	525	2 041	699	701	3
29.24 Other general purpose machinery n.e.c. ....	667	3 383	1 532	5 083	2 107	2 108	164
29.3 Agricultural and forestry machinery .....	576	2 036	759	2 696	856	856	-10
29.31 Agricultural tractors .....	102	139	20	180	65	65	3
29.32 Other agricultural and forestry machinery .....	474	1 897	739	2 516	792	792	-13
29.4 Machine-tools .....	90	696	333	1 056	493	493	42
29.41 Manufacture of portable hand held power tools ...	16	200	92	309	136	136	9
29.41 Manufacture of other metalworking machine tools .....	18	64	25	73	31	31	4
29.43 Manufacture of other machine tools n.e.c. ....	56	432	216	675	327	327	28
29.5 Other special purpose machinery .....	463	5 564	3 467	24 703	5 898	5 900	224
29.51 Machinery for metallurgy .....	13	665	368	1 719	418	418	-11
29.52 Machinery for mining, quarrying and construction.	180	2 381	1 807	17 256	3 640	3 640	152
29.53 Machinery for food, beverage and tobacco processing .....	127	770	348	1 383	478	478	14
29.54 Machinery for textile, apparel and leather production .....	17	62	17	44	27	27	1
29.55 Machinery for paper and paperboard production .	7	179	100	551	118	118	4
29.56 Other special purpose machinery .....	119	1 507	827	3 750	1 218	1 220	64
29.6 Weapons and ammunition .....	41	1 950	1 108	4 735	1 884	1 884	129
29.7 Domestic appliances n.e.c. ....	48	1 181	522	1 798	606	604	75
29.71 Electric domestic appliances .....	33	770	349	1 357	412	411	42
29.72 Non-electric domestic appliances .....	15	411	173	441	193	193	33
30-33 ELECTRICAL AND OPTICAL EQUIPMENT .....	1 191	20 176	11 578	50 388	16 870	16 874	1 422
30 Office machinery and computers .....	15	120	91	650	122	122	3
30.02 Computers and other information processing equipment .....	15	120	91	650	122	122	3

## 5 (cont.). Principal figures for local KAUs by industry subclass. 2007

Industry subclass	Local KAUs	Persons employed	Compensation of employees	Production value	Value added		Gross investment
					Market prices	Factor prices	
NOK Million							
31 Electrical machinery and apparatus n.e.c. ....	443	8 031	4 340	20 321	6 338	6 338	322
31.1 Electric motors, generators and transformers .....	54	1 241	736	2 798	927	928	58
31.2 Electricity distribution and control apparatus .....	97	2 599	1 274	5 065	1 844	1 843	33
31.3 Insulated wire .....	20	1 789	1 223	8 318	2 151	2 151	152
31.4 Accumulators, primary cells and primary batteries ..	3	26	11	35	-13	-13	0
31.5 Lightening equipment and electric lamps .....	49	888	360	1 237	433	433	34
31.6 Electrical equipment n.e.c. ....	220	1 488	736	2 868	996	996	45
31.61 Electrical equipment for engines and vehicles n.e.c. ....	6	27	13	253	39	39	3
31.62 Other electrical equipment n.e.c. ....	214	1 461	723	2 614	957	957	42
32 Radio, television, communication equipment .....	128	4 079	2 237	11 099	4 080	4 080	839
32.1 Electronic valves and tubes and other electronic components .....	49	2 136	1 102	4 537	1 633	1 633	757
32.2 Television and radio transmitters and app. for line telephony and line telegraphy .....	30	1 441	901	5 641	2 076	2 076	65
32.3 Telev. receivers, sound/video recording or reproducing app. and associated goods .....	49	502	234	921	371	371	17
33 Medical, precision and optical instruments. ....	605	7 946	4 910	18 319	6 329	6 334	257
33.1 Medical/surgical equipment and orthopaedic appliances .....	395	2 342	1 035	3 419	1 257	1 257	65
33.2 Instruments and appliances for measuring, checking, testing etc. ....	152	4 060	2 644	9 669	3 611	3 615	146
33.3 Industrial process control equipment .....	39	1 389	1 166	5 044	1 355	1 355	41
33.4 Optical instruments and photographic equipment ..	16	144	60	180	102	102	6
33.5 Watches and clocks .....	3	11	4	7	4	4	0
35.114/5 Oil platforms .....	129	22 093	13 973	60 242	16 977	16 979	885
35.114 Building and repairing of oil-platforms and modules .....	72	14 400	9 518	41 495	11 394	11 395	773
35.115 Installation and completion work on platforms and modules .....	57	7 693	4 455	18 747	5 583	5 584	112
34-35(-35.114/5) TRANSPORT EQUIPMENT .....	1 185	21 512	10 349	55 266	11 578	11 590	1 574
34 Motor vehicles, trailers and semitrailers .....	133	4 783	2 142	9 081	2 476	2 476	93
34.1 Motor vehicles .....	7	275	121	688	115	115	-4
34.2 Bodies (coachwork) for motor vehicles; manufacture of trailers and semi-trailers .....	65	1 152	468	2 325	582	582	7
34.3 Parts and accessories for motor vehicles and their engines .....	61	3 356	1 554	6 069	1 779	1 779	90
35(-35.114/5) Other transport equipment .....	1 052	16 729	8 207	46 185	9 102	9 113	1 481
35.1(-35.114/5) Building and repairing of ships and boats .....	965	13 002	6 185	40 064	7 083	7 094	663
35.11(-35.114/5) Ships .....	527	11 077	5 477	36 923	6 137	6 148	554
35.111 Ships and hulls more than 100 g.r.tons .....	142	6 022	3 050	27 844	3 070	3 082	350
35.112 Installation- and completion work on ships more than 100 g.r.tons .....	88	2 985	1 619	5 749	1 970	1 970	88
35.113 Ships and hulls less than 100 g.r.tons .....	265	1 796	677	2 644	847	847	90
35.116 Other floating equipments .....	32	274	130	686	250	250	26
35.12 Pleasure and sporting boats .....	438	1 925	708	3 141	945	945	109

## 5 (cont.). Principal figures for local KAUs by industry subclass. 2007

Industry subclass	Local KAUs	Persons employed	Compensation of employees	Production value	Value added		Gross investment
					Market prices	Factor prices	
NOK Million							
35.2 Railway and tramway locomotives and rolling stock .....	20	1 086	546	1 329	602	602	26
35.201 Manufacture of railway and tramway locomotives and rolling stock .....	2	2	:	:	:	:	:
35.202 Repairing of railway and tramway locomotives and rolling stock .....	18	1 084	:	:	:	:	:
35.3 Manufacture/repairing of aircraft .....	34	2 315	1 351	4 340	1 259	1 259	788
35.4 Motorcycles and bicycles .....	26	295	112	411	153	153	5
35.41 Motorcycles .....	1	1	:	:	:	:	:
35.42 Bicycles .....	4	4	:	:	:	:	:
35.43 Invalid carriages .....	21	290	112	408	154	154	5
35.5 Other transport equipment n.e.c. ....	7	31	12	42	5	5	0
36-37 MANUFACTURING N.E.C. ....	1 787	12 189	4 550	19 606	6 785	6 786	608
36 Furniture and manufacturing n.e.c. ....	1 645	10 775	3 838	14 394	5 432	5 433	304
36.1 Furniture .....	1 072	8 644	3 104	12 151	4 578	4 579	292
36.11 Chairs and seats .....	353	3 568	1 306	5 440	2 137	2 138	194
36.12 Other office and shop furniture .....	71	699	267	935	363	363	0
36.13 Kitchen furniture .....	174	1 625	578	2 162	763	763	19
36.14 Other furniture .....	466	2 343	765	2 786	1 048	1 048	61
36.15 Mattresses .....	8	409	189	828	267	267	18
36.2 Jewellery and related articles n.e.c. ....	211	699	203	615	263	263	3
36.21 Striking of coins and medals .....	4	37	22	105	22	22	-1
36.22 Jewellery and related articles .....	207	662	181	511	240	240	4
36.3 Musical instruments .....	42	57	10	34	17	17	0
36.4 Sports goods .....	49	701	323	895	274	274	-21
36.5 Games and toys .....	23	24	5	22	10	10	2
36.6 Miscellaneous manufacturing n.e.c. ....	248	650	193	676	290	290	27
36.61 Imitation jewellery .....	22	17	1	8	4	4	0
36.62 Brooms and brushes .....	7	119	42	114	62	62	4
36.63 Other manufacturing n.e.c. ....	219	514	150	554	224	224	23
37 Recycling .....	142	1 414	711	5 212	1 353	1 353	305
37.1 Recycling of metal waste and scrap .....	74	860	424	3 944	937	937	233
37.2 Recycling of non-metal waste and scrap .....	68	554	287	1 268	416	416	71

**6. Persons employed in local KAUs in mining, quarrying and manufacturing by county. 1998 - 2007**

County	1998	1999	2000	2001	2002	2003	2004	2005	2006	2007
The whole country .....	311 762	305 763	296 212	287 835	284 046	273 177	263 855	259 653	269 053	275 944
Østfold .....	22 096	21 331	21 062	20 423	20 389	19 813	19 092	18 942	18 858	19 126
Akershus .....	18 269	19 043	18 769	19 146	18 608	19 242	17 707	16 026	16 932	17 292
Oslo .....	29 538	29 246	27 299	25 401	24 998	25 386	24 884	23 049	24 465	24 213
Hedmark .....	12 191	11 695	11 909	11 357	11 469	10 958	10 489	10 222	10 290	10 254
Oppland .....	11 088	11 176	11 054	10 946	10 719	10 472	10 036	9 745	9 835	9 868
Buskerud .....	19 867	19 378	18 358	17 811	17 620	16 718	16 579	16 279	17 147	17 302
Vestfold .....	16 706	16 472	16 211	16 442	16 323	14 724	14 240	14 177	14 380	14 707
Telemark .....	12 947	12 427	12 313	11 625	10 989	10 592	10 271	11 212	11 309	11 190
Aust-Agder .....	8 270	8 104	7 568	7 661	7 187	6 072	6 026	6 065	6 336	6 575
Vest-Agder .....	13 141	12 741	12 270	11 594	11 699	11 197	11 006	11 305	11 560	12 465
Rogaland .....	34 509	35 685	33 394	33 102	33 680	31 170	30 863	30 133	31 874	31 997
Hordaland .....	32 854	31 257	30 680	28 755	28 759	28 442	26 998	26 943	28 565	29 594
Sogn og Fjordane .....	9 623	9 120	9 038	9 011	8 788	8 640	7 949	7 829	7 985	8 528
Møre og Romsdal .....	25 576	25 022	24 572	24 273	23 115	21 959	20 959	21 400	22 267	22 941
Sør-Trøndelag .....	15 369	15 004	14 897	13 790	13 512	12 880	12 760	12 798	13 152	13 759
Nord-Trøndelag .....	7 885	7 707	6 945	7 084	7 002	6 967	6 560	6 758	7 213	7 521
Nordland .....	12 365	11 583	11 283	11 154	10 895	10 180	10 111	9 738	10 011	10 355
Troms Romsa .....	5 592	5 236	5 171	5 060	5 058	4 920	4 814	4 371	4 215	4 279
Finmark Finnmarku .....	3 644	3 312	3 201	2 933	2 988	2 592	2 245	2 347	2 281	2 451
Svalbard .....	232	224	218	267	248	253	266	314	376	416

**7. Principal figures for local KAUs in mining, quarrying and manufacturing by county. 2007**

	Local KAUs	Persons employed	Compensation of employees	Production value	Value added		Gross investment
					Market prices	Factor prices	
NOK Million							
The whole country .....	19 819	275 944	134 846	797 280	216 197	206 904	25 654
Østfold .....	1 256	19 126	8 404	44 903	13 204	12 831	1 641
Akershus .....	1 616	17 292	9 212	49 630	16 656	14 441	804
Oslo .....	1 913	24 213	14 656	60 719	24 212	18 883	1 109
Hedmark .....	885	10 254	3 997	21 521	5 662	5 610	606
Oppland .....	902	9 868	4 026	18 426	5 627	5 629	596
Buskerud .....	1 225	17 302	8 695	40 982	12 631	12 632	1 230
Vestfold .....	1 082	14 707	7 011	54 732	11 955	11 672	1 009
Telemark .....	842	11 190	5 512	36 788	9 875	9 866	1 804
Aust-Agder .....	612	6 575	2 794	12 044	4 323	3 940	447
Vest-Agder .....	750	12 465	6 661	62 937	11 343	11 144	895
Rogaland .....	1 674	31 997	17 150	84 138	24 583	24 578	2 621
Hordaland .....	1 698	29 594	15 457	114 491	26 788	25 946	2 852
Sogn og Fjordane .....	553	8 528	3 502	25 617	4 588	4 528	686
Møre og Romsdal .....	1 465	22 941	10 565	73 139	18 083	18 085	2 324
Sør-Trøndelag .....	1 083	13 759	6 056	33 251	9 874	10 311	1 009
Nord-Trøndelag .....	581	7 521	3 193	15 448	3 216	3 222	472
Nordland .....	886	10 355	4 421	32 720	8 727	8 729	4 824
Troms Romsa .....	484	4 279	1 648	7 850	2 310	2 320	384
Finmark Finnmarku .....	300	2 451	840	4 297	1 084	1 085	249
Svalbard .....	7	416	:	:	:	:	:

**8. Persons employed by county and industry branch. 2007**

	Østfold	Akershus	Oslo	Hedmark	Oppland	Buske- rud	Vestfold	Tele- mark	Aust- Agder	Vest- Agder
<b>10,12-37 MANUFACTURING, MINING AND QUARRYING</b> .....	<b>19 126</b>	<b>17 292</b>	<b>24 213</b>	<b>10 254</b>	<b>9 868</b>	<b>17 302</b>	<b>14 707</b>	<b>11 190</b>	<b>6 575</b>	<b>12 465</b>
10,12-14 MINING AND QUARRYING .....	106	273	76	171	175	195	414	163	105	43
10 Coal and peat .....	6	-	-	5	-	-	6	-	-	-
13 Metal ores .....	-	-	6	-	-	-	-	-	-	1
14 Other mining and quarrying .....	100	273	70	166	175	195	408	163	105	42
<b>15-37 MANUFACTURING</b> .....	<b>19 020</b>	<b>17 019</b>	<b>24 137</b>	<b>10 083</b>	<b>9 693</b>	<b>17 107</b>	<b>14 293</b>	<b>11 027</b>	<b>6 470</b>	<b>12 422</b>
<b>15-16 FOOD PRODUCTS; BEVERAGES AND TOBACCO</b> .....	<b>3 997</b>	<b>3 125</b>	<b>5 373</b>	<b>2 656</b>	<b>1 432</b>	<b>1 230</b>	<b>2 833</b>	<b>559</b>	<b>613</b>	<b>1 306</b>
15.1 Meat and meat products .....	1 968	553	1 009	988	393	317	1 207	23	30	194
15.2 Fish and fish products .....	128	-	43	96	11	21	135	16	16	160
15.5 Dairy products .....	129	270	821	505	347	11	180	139	33	335
15.3-4/6-8 Other food products .....	1 423	723	2 771	849	619	736	951	286	331	424
15.9/16 Beverages and tobacco .....	195	1 535	480	92	6	133	288	95	203	174
<b>17-19 TEXTILES AND TEXTILE PRODUCTS, LEATHER AND LEATHER PRODUCTS</b> .....	<b>375</b>	<b>286</b>	<b>281</b>	<b>82</b>	<b>355</b>	<b>177</b>	<b>150</b>	<b>133</b>	<b>84</b>	<b>254</b>
17 Textiles .....	116	145	158	35	237	83	120	80	49	164
18 Wearing apparel; dressing and dyeing of fur .....	253	138	113	42	64	90	10	43	35	57
19 Leather and leather products .....	6	3	10	5	54	4	20	10	-	33
<b>20 WOOD AND WOOD PRODUCTS</b> .....	<b>696</b>	<b>705</b>	<b>145</b>	<b>2 562</b>	<b>1 358</b>	<b>765</b>	<b>817</b>	<b>451</b>	<b>781</b>	<b>1 481</b>
<b>21 PULP, PAPER AND PAPER PRODUCTS</b> .....	<b>2 433</b>	<b>244</b>	<b>30</b>	<b>28</b>	<b>4</b>	<b>1 773</b>	<b>154</b>	<b>51</b>	<b>47</b>	<b>197</b>
<b>22 PUBLISHING AND PRINTING ETC.</b> .....	<b>1 215</b>	<b>1 944</b>	<b>9 872</b>	<b>675</b>	<b>639</b>	<b>581</b>	<b>719</b>	<b>708</b>	<b>289</b>	<b>629</b>
<b>23-24 REFINED PETROLEUM PRODUCTS AND CHEMICAL PRODUCTS</b> .....	<b>1 662</b>	<b>1 017</b>	<b>2 709</b>	<b>304</b>	<b>30</b>	<b>511</b>	<b>1 401</b>	<b>2 869</b>	<b>272</b>	<b>703</b>
24.1 Refined petroleum products and basic chemicals .....	943	421	1 057	2	28	71	423	2 675	271	247
24.2-7 Other chemical products .....	719	596	1 652	302	2	440	978	194	1	456
<b>25 RUBBER AND PLASTIC PRODUCTS</b> .....	<b>690</b>	<b>484</b>	<b>142</b>	<b>248</b>	<b>205</b>	<b>976</b>	<b>352</b>	<b>224</b>	<b>66</b>	<b>249</b>
<b>26 OTHER NON-METALLIC MINERAL PRODUCTS</b> .....	<b>1 184</b>	<b>583</b>	<b>497</b>	<b>375</b>	<b>487</b>	<b>856</b>	<b>371</b>	<b>785</b>	<b>331</b>	<b>325</b>
<b>27 BASIC METALS</b> .....	<b>231</b>	<b>14</b>	<b>247</b>	<b>600</b>	<b>376</b>	<b>172</b>	<b>652</b>	<b>545</b>	<b>12</b>	<b>1 521</b>
<b>28 METAL PRODUCTS, EXCEPT MACHINERY AND EQUIPMENT</b> .....	<b>2 333</b>	<b>1 025</b>	<b>787</b>	<b>874</b>	<b>827</b>	<b>982</b>	<b>2 003</b>	<b>1 027</b>	<b>936</b>	<b>1 089</b>
<b>29 MACHINERY AND EQUIPMENT N.E.C.</b> .....	<b>1 961</b>	<b>1 333</b>	<b>577</b>	<b>477</b>	<b>1 265</b>	<b>3 079</b>	<b>815</b>	<b>1 094</b>	<b>601</b>	<b>2 484</b>
<b>30-33 ELECTRICAL AND OPTICAL EQUIPMENT</b> .....	<b>1 531</b>	<b>2 127</b>	<b>2 078</b>	<b>398</b>	<b>114</b>	<b>2 225</b>	<b>2 394</b>	<b>1 198</b>	<b>838</b>	<b>222</b>
30 Office machinery and computers .....	-	29	62	-	-	-	7	-	-	-
31 Electrical machinery and apparatus n.e.c. ....	1 081	675	432	287	15	1 099	296	948	154	25
32 Radio, television, communication equipment .....	280	869	349	13	22	26	701	170	628	2
33 Medical, precision and optical instruments .....	170	554	1 235	98	77	1 100	1 390	80	56	195
<b>35.114/5 OIL PLATFORMS</b> .....	<b>-</b>	<b>1 747</b>	<b>46</b>	<b>-</b>	<b>-</b>	<b>1 298</b>	<b>502</b>	<b>303</b>	<b>317</b>	<b>260</b>
<b>34-35(-35.114/5) TRANSPORT EQUIPMENT</b> .....	<b>289</b>	<b>1 477</b>	<b>739</b>	<b>320</b>	<b>1 450</b>	<b>1 627</b>	<b>523</b>	<b>744</b>	<b>978</b>	<b>1 240</b>
34 Motor vehicles, trailers and semitrailers .....	149	221	51	288	1 367	660	272	22	37	330
35(-35.114/5) Other transport equipment .....	140	1 256	688	32	83	967	251	722	941	910
<b>36-37 MANUFACTURING N.E.C.</b> .....	<b>423</b>	<b>908</b>	<b>614</b>	<b>484</b>	<b>1 151</b>	<b>855</b>	<b>607</b>	<b>336</b>	<b>305</b>	<b>462</b>
36 Furniture and manufacturing n.e.c. ....	326	777	468	422	1 070	687	541	242	304	401
37 Recycling .....	97	131	146	62	81	168	66	94	1	61

## 8 (cont.). Persons employed by county and industry branch. 2007

	Roga- land	Horda- land	Sogn og Fjord- ane	Møre og Roms- dal	Sør- Trønde- lag	Nord- Trønde- lag	Nord- land	Troms Romsa	Finn- mark Finn- marku	Sval- bard
10,12-37 MANUFACTURING, MINING AND QUARRYING .....	31 997	29 594	8 528	22 941	13 759	7 521	10 355	4 279	2 451	416
10,12-14 MINING AND QUARRYING .....	715	158	182	326	179	186	413	85	161	407
10 Coal and peat .....	-	-	-	-	2	1	-	-	-	407
13 Metal ores .....	267	-	-	-	-	-	149	-	6	-
14 Other mining and quarrying .....	448	158	182	326	177	185	264	85	155	-
15-37 MANUFACTURING .....	31 282	29 436	8 346	22 615	13 580	7 335	9 942	4 194	2 290	9
15-16 FOOD PRODUCTS; BEVERAGES AND TOBACCO .....	4 994	4 379	1 895	3 480	4 030	1 431	2 938	1 849	989	2
15.1 Meat and meat products .....	2 024	267	518	444	1 048	430	386	302	64	-
15.2 Fish and fish products .....	497	966	671	1 758	814	289	1 803	700	713	-
15.5 Dairy products .....	797	633	186	349	686	197	112	301	48	-
15.3-4/6-8 Other food products .....	1 067	1 926	217	676	959	410	383	295	158	2
15.9/16 Beverages and tobacco .....	160	492	174	102	293	2	76	166	5	-
17-19 TEXTILES AND TEXTILE PRODUCTS, LEATHER AND LEATHER PRODUCTS .....	564	919	338	837	373	60	270	147	45	2
17 Textiles .....	424	638	209	688	311	18	255	120	36	-
18 Wearing apparel; dressing and dyeing of fur .....	122	204	104	149	60	42	15	27	9	2
19 Leather and leather products .....	18	77	25	-	2	-	-	-	-	-
20 WOOD AND WOOD PRODUCTS .....	1 557	884	713	613	1 085	770	790	216	51	-
21 PULP, PAPER AND PAPER PRODUCTS .....	124	33	39	50	294	665	1	2	-	-
22 PUBLISHING AND PRINTING ETC. ....	1 635	1 947	341	677	1 331	348	743	489	407	5
23-24 REFINED PETROLEUM PRODUCTS AND CHEMICAL PRODUCTS .....	198	1 010	229	584	504	41	770	35	-	-
24.1 Refined petroleum products and basic chemicals .....	175	890	228	382	499	2	765	32	-	-
24.2-7 Other chemical products .....	23	120	1	202	5	39	5	3	-	-
25 RUBBER AND PLASTIC PRODUCTS .....	148	324	87	701	166	324	169	104	39	-
26 OTHER NON-METALLIC MINERAL PRODUCTS .....	1 397	682	334	774	648	464	517	133	172	-
27 BASIC METALS .....	2 058	1 898	1 076	1 136	14	1	1 181	114	-	-
28 METAL PRODUCTS, EXCEPT MACHINERY AND EQUIPMENT .....	2 961	1 895	778	2 483	1 267	1 023	787	217	89	-
29 MACHINERY AND EQUIPMENT N.E.C. ....	2 844	4 064	469	2 745	810	550	615	283	36	-
30-33 ELECTRICAL AND OPTICAL EQUIPMENT ..	1 755	2 118	54	833	1 260	356	519	131	25	-
30 Office machinery and computers .....	6	2	-	3	4	7	-	-	-	-
31 Electrical machinery and apparatus n.e.c. ....	558	739	44	711	455	187	264	43	18	-
32 Radio, television, communication equipment .....	115	386	-	1	253	66	194	4	-	-
33 Medical, precision and optical instruments .....	1 076	991	10	118	548	96	61	84	7	-
35.114/5 OIL PLATFORMS .....	8 533	6 145	5	619	262	841	-	22	82	-
34-35(-35.114/5) TRANSPORT EQUIPMENT .....	1 953	2 395	1 691	3 898	788	342	424	341	293	-
34 Motor vehicles, trailers and semitrailers .....	86	158	587	282	62	167	21	23	-	-
35(-35.114/5) Other transport equipment .....	1 867	2 237	1 104	3 616	726	175	403	318	293	-
36-37 MANUFACTURING N.E.C. ....	561	743	297	3 185	748	119	218	111	62	-
36 Furniture and manufacturing n.e.c. ....	425	645	264	3 151	658	97	137	105	55	-
37 Recycling .....	136	98	33	34	90	22	81	6	7	-



**9. Value added for local KAUs in mining, quarrying and manufacturing by county. 1998-2007**

	Value added at market prices. NOK million									
	1998	1999	2000	2001	2002	2003	2004	2005	2006	2007
The whole country .....	136 932	142 806	148 884	153 907	153 800	161 835	174 453	185 531	209 115	216 197
Østfold .....	9 718	9 769	10 652	10 689	10 845	10 776	11 473	12 455	13 060	13 204
Akershus .....	8 039	8 997	9 814	10 730	11 941	13 106	13 052	12 320	14 447	16 656
Oslo .....	18 425	20 288	21 497	21 029	21 731	22 152	21 674	24 091	25 364	24 212
Hedmark .....	3 998	4 171	4 191	5 489	4 887	4 982	5 165	5 376	5 414	5 662
Oppland .....	3 726	4 016	4 366	4 282	4 492	4 824	4 942	5 123	5 398	5 627
Buskerud .....	9 661	9 447	9 143	10 055	9 836	10 131	10 642	10 906	12 666	12 631
Vestfold .....	6 880	7 935	7 569	7 804	7 046	9 184	10 795	11 320	11 192	11 955
Telemark .....	6 632	6 428	6 523	6 711	5 270	5 601	6 207	6 831	7 866	9 875
Aust-Agder .....	3 050	3 136	3 151	2 955	3 160	2 777	3 000	3 744	3 815	4 323
Vest-Agder .....	6 250	6 953	5 329	5 530	6 125	6 469	7 168	7 557	8 710	11 343
Rogaland .....	14 609	16 006	15 840	16 047	17 109	17 151	19 031	20 091	25 202	24 583
Hordaland .....	12 834	13 343	16 119	16 066	15 628	17 456	20 585	24 712	27 887	26 788
Sogn og Fjordane .....	5 134	4 268	5 545	5 137	4 299	4 662	4 842	4 875	4 866	4 588
Møre og Romsdal .....	10 829	11 117	12 120	12 673	12 500	13 086	13 905	14 538	18 149	18 083
Sør-Trøndelag .....	5 823	6 113	5 667	6 297	6 755	6 913	7 506	7 775	8 881	9 874
Nord-Trøndelag .....	3 505	3 326	3 672	3 955	3 479	3 309	3 451	3 322	4 109	3 216
Nordland .....	4 672	4 494	4 766	5 370	5 552	6 006	7 060	6 706	7 975	8 727
Troms Romsa .....	2 015	2 015	2 084	2 086	1 985	2 173	2 370	2 342	2 675	2 310
Finmark Finnmarku .....	1 092	950	959	955	945	787	961	1 064	1 060	1 084
Svalbard .....	:	:	:	:	:	:	:	:	:	:
	Value added at factor prices. NOK million									
	1998	1999	2000	2001	2002	2003	2004	2005	2006	2007
The whole country .....	131 192	135 404	140 946	144 440	144 055	151 536	164 122	174 953	199 198	206 904
Østfold .....	9 746	9 793	10 684	10 506	10 572	10 474	11 231	11 990	12 628	12 831
Akershus .....	6 934	7 839	8 660	9 450	10 632	11 196	10 968	10 634	12 430	14 441
Oslo .....	14 290	14 883	15 929	15 367	16 042	16 655	16 282	18 762	20 147	18 883
Hedmark .....	4 088	4 271	4 278	5 435	4 672	4 772	5 010	5 284	5 405	5 610
Oppland .....	3 747	4 044	4 392	4 301	4 466	4 754	4 948	5 129	5 432	5 629
Buskerud .....	9 536	9 228	8 861	9 802	9 610	9 893	10 346	10 640	12 388	12 632
Vestfold .....	6 535	7 568	7 171	7 525	6 714	8 803	10 317	10 740	10 763	11 672
Telemark .....	6 667	6 424	6 502	6 695	5 258	5 594	6 214	6 840	7 874	9 866
Aust-Agder .....	2 910	2 989	3 008	2 787	2 997	2 611	2 811	3 313	3 436	3 940
Vest-Agder .....	6 098	6 770	5 376	5 485	5 993	6 343	6 969	7 366	8 447	11 144
Rogaland .....	14 516	15 894	15 738	15 815	16 898	16 983	19 098	20 133	25 431	24 578
Hordaland .....	13 213	13 641	16 268	15 481	15 046	16 810	20 071	24 248	27 339	25 946
Sogn og Fjordane .....	5 175	4 303	5 548	5 142	4 284	4 618	4 845	4 848	4 861	4 528
Møre og Romsdal .....	11 172	11 485	12 335	12 816	12 794	13 355	13 957	14 519	18 150	18 085
Sør-Trøndelag .....	5 281	5 566	5 096	5 674	6 157	6 282	6 850	7 056	8 316	10 311
Nord-Trøndelag .....	3 535	3 344	3 699	3 955	3 479	3 306	3 444	3 314	4 154	3 222
Nordland .....	4 699	4 503	4 663	5 259	5 442	5 960	6 952	6 525	8 034	8 729
Troms Romsa .....	1 814	1 819	1 883	1 923	1 825	2 010	2 185	2 150	2 503	2 320
Finmark Finnmarku .....	1 140	1 005	979	973	959	832	1 004	1 082	1 083	1 085
Svalbard .....	:	:	:	:	:	:	:	:	:	:



**10. Income and expenditure in local KAUs in mining, quarrying and manufacturing, by employment group. NOK Million. 2007**

	Employment group							
	Total	0-4	5-9	10-19	20-49	50-99	100-199	200 and over
Income .....	822 420	37 871	30 596	48 378	109 598	115 356	125 194	355 427
Production on own account .....	692 079	22 223	23 660	38 719	89 098	94 802	104 316	319 261
Goods for resale .....	43 845	1 505	2 055	3 911	7 371	9 181	7 316	12 506
Other sale .....	12 020	687	893	889	1 811	1 926	2 920	2 894
Repair work .....	24 905	1 196	860	1 442	3 623	4 223	2 616	10 945
Contract work .....	33 288	6 692	2 383	2 460	6 243	3 698	6 209	5 603
Rental income from real property .....	1 024	451	90	101	115	74	88	105
Rental income from other fixed durable assets .....	653	128	38	96	76	59	76	180
Other operating income .....	14 602	4 988	617	759	1 261	1 393	1 652	3 932
Expenditure .....	747 012	32 296	28 464	44 614	101 669	106 696	112 317	320 956
Raw materials .....	418 098	16 279	12 684	20 427	51 590	55 284	59 030	202 804
Goods for resale .....	31 033	1 069	1 455	2 918	5 244	7 113	5 127	8 107
Compensation of employees .....	134 844	4 584	7 108	11 140	22 046	21 537	22 738	45 691
Contract work .....	35 398	1 969	1 356	1 728	4 781	5 018	5 429	15 117
Energy .....	16 927	483	510	791	1 821	1 836	2 669	8 817
Outgoing freight and forwarding .....	17 228	600	714	1 018	2 616	2 843	3 009	6 428
Repairs .....	11 842	479	495	826	1 693	1 708	2 011	4 630
Expenses of rented property .....	8 914	701	651	930	1 732	1 443	1 210	2 247
Rented fixed durable assets other than property .....	5 429	412	431	635	994	627	468	1 862
Other expenses .....	67 296	5 721	3 058	4 200	9 151	9 287	10 625	25 254

**11. Income and expenditure in local KAUs in mining, quarrying and manufacturing. NOK Million. 1999-2007**

	1999	2000	2001	2002	2003	2004	2005	2006	2007
Income .....	498 077	519 335	535 504	524 211	522 034	567 441	626 649	730 899	822 414
Production on own account .....	417 096	448 031	456 782	444 349	432 622	470 490	514 194	607 948	692 078
Goods for resale .....	24 565	29 047	29 904	30 413	29 740	30 117	36 297	43 326	43 847
Other sale .....	10 759	8 402	11 485	11 887	14 264	18 752	27 467	17 754	12 020
Repair work .....	12 262	11 617	12 227	14 067	15 754	16 274	17 413	20 609	24 905
Contract work .....	27 906	14 681	15 441	14 313	20 224	21 639	20 113	28 401	33 282
Rental income from real property .....	557	521	673	602	575	666	1 075	1 113	1 024
Rental income from other fixed durable assets .....	117	129	378	204	158	362	452	728	654
Other operating income .....	4 816	6 906	8 614	8 376	8 697	9 141	9 640	11 021	14 603
Expenditure .....	445 782	470 497	482 874	472 525	461 805	498 979	553 890	647 719	746 961
Raw materials .....	226 969	246 115	246 100	234 395	219 867	246 528	284 785	347 440	418 098
Goods for resale .....	16 617	20 832	22 066	20 942	20 654	21 177	24 940	29 547	31 032
Compensation of employees .....	94 967	97 571	99 898	102 815	101 513	104 595	110 865	123 789	134 846
Contract work .....	20 376	18 009	22 603	24 590	28 539	26 960	29 365	30 197	35 398
Energy .....	10 276	11 210	11 892	11 203	12 570	13 868	14 781	16 767	16 928
Outgoing freight and forwarding .....	11 607	12 692	12 843	12 886	13 081	14 325	15 554	16 725	17 230
Repairs .....	8 788	9 011	9 082	8 968	8 929	9 103	9 398	10 033	11 841
Expenses of rented property .....	5 230	5 352	5 825	6 307	6 796	6 415	6 960	8 352	8 914
Rented fixed durable assets other than property .....	3 191	3 084	2 938	3 073	3 410	3 427	4 013	4 799	5 429
Other expenses .....	47 760	46 620	49 627	47 346	46 446	52 581	53 230	60 070	67 246

**12. Income and expenditure for local KAUs in mining, quarrying and manufacturing by industry subclass. NOK Million. 2007**

	Income	Production on own account	Goods for resale	Other sale	Repair work	Contract work	Rental income from real property	Rental income from other fixed durable assets	Other operating income
<b>10,12-37 MANUFACTURING, MINING AND QUARRYING</b> .....	822 414	692 078	43 847	12 020	24 905	33 282	1 024	654	14 603
10,12-14 MINING AND QUARRYING ..	11 942	10 355	277	579	15	189	48	21	458
10 Coal and peat .....	2 042	1 727	0	0	0	0	12	0	303
13 Metal ores .....	797	784	0	0	0	0	4	0	8
14 Other mining and quarrying .....	9 104	7 844	277	579	15	189	32	20	147
<b>15-37 MANUFACTURING</b> .....	810 471	681 724	43 570	11 441	24 891	33 092	976	633	14 145
<b>15-16 FOOD PRODUCTS; BEVERAGES AND TOBACCO</b> .....	164 403	131 692	16 746	3 719	0	9 098	189	191	2 767
15.1 Meat and meat products .....	40 857	31 948	2 825	2 134	0	3 132	29	63	725
15.2 Fish and fish products .....	36 049	28 355	3 005	619	0	3 603	45	94	328
15.5 Dairy products .....	19 910	14 112	3 290	662	0	660	13	1	1 172
15.3-4/6-8 Other food products .....	30 262	25 533	3 147	203	0	964	30	30	356
15.9/16 Beverages and tobacco .....	15 401	13 311	1 266	64	0	578	25	2	154
<b>17-19 TEXTILES AND TEXTILE PRODUCTS, LEATHER AND LEATHER PRODUCTS</b> .....	8 198	6 609	1 192	56	146	33	18	63	82
17 Textiles .....	5 405	4 375	750	53	143	22	14	6	42
18 Wearing apparel; dressing and dyeing of fur .....	2 416	1 870	442	3	3	11	3	56	28
19 Leather and leather products .....	376	364	0	0	0	0	1	0	11
<b>20 WOOD AND WOOD PRODUCTS</b> ..	30 709	26 526	3 092	381	11	441	60	9	189
<b>21 PULP, PAPER AND PAPER PRODUCTS</b> .....	20 407	16 254	489	21	2	3 565	6	1	69
<b>22 PUBLISHING AND PRINTING ETC.</b> ..	43 585	40 495	591	821	1	841	253	47	537
<b>23-24 REFINED PETROLEUM PRODUCTS AND CHEMICAL PRODUCTS</b> .....	121 617	105 088	4 474	1 920	60	4 069	50	1	5 955
24.1 Refined petroleum products and basic chemicals .....	103 096	90 968	2 777	1 913	59	2 617	31	1	4 730
24.2-7 Other chemical products .....	18 521	14 121	1 697	7	1	1 452	19	1	1 225
<b>25 RUBBER AND PLASTIC PRODUCTS</b> .....	11 803	9 746	1 710	29	27	220	12	2	57
<b>26 OTHER NON-METALLIC MINERAL PRODUCTS</b> .....	26 635	21 831	2 443	950	5	965	61	14	366
<b>27 BASIC METALS</b> .....	81 185	80 282	185	98	6	335	7	4	267
<b>28 METAL PRODUCTS, EXCEPT MACHINERY AND EQUIPMENT</b> .....	38 903	30 469	2 277	247	2 221	3 109	65	43	471
<b>29 MACHINERY AND EQUIPMENT N.E.C</b> .....	74 198	58 882	3 489	2 012	6 566	2 764	67	43	374
<b>30-33 ELECTRICAL AND OPTICAL EQUIPMENT</b> .....	51 599	45 456	2 716	859	1 101	1 052	13	90	312
30 Office machinery and computers .....	643	637	0	2	0	3	1	0	0
31 Electrical machinery and apparatus n.e.c .....	21 444	17 868	2 151	160	685	528	6	7	40
32 Radio, television, communication equipment .....	11 188	10 624	55	292	12	57	1	0	147
33 Medical, precision and optical instruments .....	18 324	16 328	510	404	404	464	6	82	125
<b>35.114/5 OIL PLATFORMS</b> .....	59 805	48 181	115	101	6 169	4 126	16	49	1 049
<b>34-35(-35.114/5) TRANSPORT EQUIPMENT</b> .....	56 041	42 603	1 620	94	8 567	1 492	104	63	1 496
34 Motor vehicles, trailers and semitrailers .....	9 455	8 532	587	58	44	47	8	4	175
35(-35.114/5) Other transport equipment .....	46 585	34 071	1 034	36	8 523	1 445	97	59	1 321
<b>36-37 MANUFACTURING N.E.C.</b> .....	21 384	17 609	2 430	133	10	983	54	13	151
36 Furniture and manufacturing n.e.c. ..	15 881	12 820	2 022	7	10	872	44	9	96
37 Recycling .....	5 503	4 789	408	126	0	111	10	4	55

**12 (cont.). Income and expenditure for local KAUs in mining, quarrying and manufacturing by industry subclass. NOK Million. 2007**

	Expen- diture	Raw mate- rials	Goods for resale	Com- pen- sation of employ- ees	Contra- ct work	Energy	Out- going freight and for- warding	Repairs	Expen- ses of rented property	Rented fixed durable assets other than property	Other expen- ses
<b>10,12-37 MANUFACTURING, MINING AND QUARRYING .....</b>	<b>746 961</b>	<b>418 098</b>	<b>31 032</b>	<b>134 846</b>	<b>35 398</b>	<b>16 928</b>	<b>17 230</b>	<b>11 841</b>	<b>8 914</b>	<b>5 429</b>	<b>67 246</b>
10,12-14 MINING AND QUARRYING ..	10 048	1 774	193	2 299	842	636	1 500	717	89	440	1 559
10 Coal and peat .....	1 804	20	0	420	1	60	633	111	11	34	515
13 Metal ores .....	583	92	0	229	35	84	4	25	1	4	108
14 Other mining and quarrying .....	7 661	1 661	193	1 650	806	492	864	581	77	402	936
<b>15-37 MANUFACTURING .....</b>	<b>736 913</b>	<b>416 324</b>	<b>30 840</b>	<b>132 547</b>	<b>34 556</b>	<b>16 291</b>	<b>15 730</b>	<b>11 124</b>	<b>8 825</b>	<b>4 989</b>	<b>65 687</b>
<b>15-16 FOOD PRODUCTS; BEVERAGES AND TOBACCO .....</b>	<b>145 102</b>	<b>88 112</b>	<b>11 826</b>	<b>20 421</b>	<b>4 506</b>	<b>2 054</b>	<b>3 601</b>	<b>2 299</b>	<b>1 625</b>	<b>801</b>	<b>9 856</b>
15.1 Meat and meat products .....	41 074	29 284	2 331	5 062	461	327	438	459	262	131	2 320
15.2 Fish and fish products .....	34 420	23 733	2 716	3 466	676	469	1 037	518	311	247	1 247
15.5 Dairy products .....	18 999	9 829	2 831	2 559	1 200	280	567	379	231	39	1 083
15.3-4/6-8 Other food products .....	26 821	11 520	2 041	5 797	1 503	536	690	521	541	232	3 440
15.9/16 Beverages and tobacco .....	8 740	2 583	829	2 309	557	175	636	207	168	122	1 156
<b>17-19 TEXTILES AND TEXTILE PRODUCTS, LEATHER AND LEATHER PRODUCTS .....</b>	<b>7 476</b>	<b>3 296</b>	<b>808</b>	<b>1 826</b>	<b>120</b>	<b>100</b>	<b>178</b>	<b>83</b>	<b>219</b>	<b>39</b>	<b>807</b>
17 Textiles .....	4 982	2 186	529	1 300	70	80	123	64	152	33	444
18 Wearing apparel; dressing and dyeing of fur .....	2 135	908	278	445	45	13	46	14	61	5	319
19 Leather and leather products .....	360	203	0	81	5	7	9	5	6	1	44
<b>20 WOOD AND WOOD PRODUCTS ..</b>	<b>28 661</b>	<b>13 679</b>	<b>2 399</b>	<b>6 018</b>	<b>1 942</b>	<b>499</b>	<b>887</b>	<b>571</b>	<b>345</b>	<b>189</b>	<b>2 131</b>
<b>21 PULP, PAPER AND PAPER PRODUCTS .....</b>	<b>19 322</b>	<b>8 213</b>	<b>376</b>	<b>2 948</b>	<b>2 425</b>	<b>1 624</b>	<b>1 375</b>	<b>582</b>	<b>82</b>	<b>76</b>	<b>1 621</b>
<b>22 PUBLISHING AND PRINTING ETC.....</b>	<b>39 335</b>	<b>10 874</b>	<b>427</b>	<b>13 113</b>	<b>3 559</b>	<b>254</b>	<b>2 538</b>	<b>549</b>	<b>1 165</b>	<b>407</b>	<b>6 448</b>
<b>23-24 REFINED PETROLEUM PRODUCTS AND CHEMICAL PRODUCTS .....</b>	<b>107 705</b>	<b>79 084</b>	<b>3 063</b>	<b>9 379</b>	<b>628</b>	<b>2 654</b>	<b>1 527</b>	<b>1 427</b>	<b>298</b>	<b>175</b>	<b>9 471</b>
24.1 Refined petroleum products and basic chemicals .....	93 489	73 125	2 134	6 071	384	2 440	1 277	1 189	156	109	6 603
24.2-7 Other chemical products .....	14 217	5 959	929	3 308	244	213	250	238	142	66	2 868
<b>25 RUBBER AND PLASTIC PRODUCTS .....</b>	<b>10 788</b>	<b>4 886</b>	<b>1 374</b>	<b>2 394</b>	<b>160</b>	<b>220</b>	<b>404</b>	<b>185</b>	<b>202</b>	<b>79</b>	<b>884</b>
<b>26 OTHER NON-METALLIC MINERAL PRODUCTS .....</b>	<b>23 709</b>	<b>9 084</b>	<b>1 646</b>	<b>5 242</b>	<b>1 277</b>	<b>966</b>	<b>1 540</b>	<b>749</b>	<b>280</b>	<b>301</b>	<b>2 625</b>
<b>27 BASIC METALS .....</b>	<b>72 939</b>	<b>53 091</b>	<b>127</b>	<b>6 324</b>	<b>1 092</b>	<b>6 046</b>	<b>1 277</b>	<b>1 728</b>	<b>88</b>	<b>206</b>	<b>2 958</b>
<b>28 METAL PRODUCTS, EXCEPT MACHINERY AND EQUIPMENT .....</b>	<b>35 245</b>	<b>15 098</b>	<b>1 463</b>	<b>10 250</b>	<b>2 561</b>	<b>405</b>	<b>390</b>	<b>494</b>	<b>781</b>	<b>492</b>	<b>3 311</b>
<b>29 MACHINERY AND EQUIPMENT N.E.C .....</b>	<b>68 017</b>	<b>40 410</b>	<b>2 458</b>	<b>14 181</b>	<b>1 873</b>	<b>385</b>	<b>543</b>	<b>598</b>	<b>773</b>	<b>392</b>	<b>6 404</b>
<b>30-33 ELECTRICAL AND OPTICAL EQUIPMENT .....</b>	<b>46 943</b>	<b>25 321</b>	<b>1 846</b>	<b>11 578</b>	<b>1 552</b>	<b>184</b>	<b>425</b>	<b>369</b>	<b>839</b>	<b>274</b>	<b>4 555</b>
30 Office machinery and computers .....	618	463	0	91	3	1	2	4	9	4	42
31 Electrical machinery and apparatus n.e.c .....	19 806	10 461	1 483	4 340	978	102	268	163	255	108	1 648
32 Radio, television, communication equipment .....	9 297	5 718	41	2 237	108	33	60	71	174	26	828
33 Medical, precision and optical instruments .....	17 222	8 679	322	4 910	464	47	95	131	402	136	2 036
<b>35.114/5 OIL PLATFORMS .....</b>	<b>57 306</b>	<b>22 732</b>	<b>69</b>	<b>13 973</b>	<b>9 176</b>	<b>168</b>	<b>139</b>	<b>466</b>	<b>955</b>	<b>1 112</b>	<b>8 516</b>
<b>34-35(-35.114/5) TRANSPORT EQUIPMENT .....</b>	<b>55 193</b>	<b>34 322</b>	<b>1 156</b>	<b>10 349</b>	<b>3 095</b>	<b>430</b>	<b>287</b>	<b>646</b>	<b>753</b>	<b>244</b>	<b>3 911</b>
34 Motor vehicles, trailers and semitrailers .....	9 169	4 941	422	2 142	68	149	130	139	157	38	982
35(-35.114/5) Other transport equipment .....	46 024	29 381	733	8 207	3 028	281	157	507	596	205	2 928
<b>36-37 MANUFACTURING N.E.C. ....</b>	<b>19 172</b>	<b>8 123</b>	<b>1 802</b>	<b>4 550</b>	<b>590</b>	<b>303</b>	<b>617</b>	<b>378</b>	<b>421</b>	<b>199</b>	<b>2 190</b>
36 Furniture and manufacturing n.e.c. ..	14 308	5 403	1 507	3 838	482	174	481	186	324	111	1 802
37 Recycling .....	4 864	2 720	295	711	108	129	136	192	97	89	388

**13. Number of persons employed and local KAUs by employment group. 1998-2007**

Employment group	Persons employed									
	1998	1999	2000	2001	2002	2003	2004	2005	2006	2007
0-4 .....	23 964	20 715	20 492	20 018	21 974	18 743	19 350	18 692	18 338	17 450
5-9 .....	18 076	18 209	18 467	17 202	16 815	17 395	18 076	17 439	18 145	17 674
10-19 .....	28 106	27 176	27 048	26 443	26 376	27 481	26 856	27 048	26 718	26 329
20-49 .....	48 461	49 625	50 212	49 988	49 154	46 987	45 367	45 929	46 849	47 749
50-99 .....	45 319	43 763	42 834	43 728	42 013	39 035	41 229	40 106	42 005	44 365
100-199 .....	50 200	50 806	48 503	46 522	46 503	46 039	38 730	40 608	41 240	43 035
200 and more .....	97 636	95 469	88 656	83 934	81 211	77 497	74 247	69 831	75 758	79 342

Employment group	Local KAUs									
	1998	1999	2000	2001	2002	2003	2004	2005	2006	2007
0-4 .....	15 091	14 162	15 320	15 269	16 262	15 322	15 246	14 874	14 457	13 328
5-9 .....	2 723	2 738	2 806	2 611	2 436	2 606	2 709	2 625	2 727	2 664
10-19 .....	2 058	2 009	2 002	1 958	1 908	2 010	1 961	1 988	1 947	1 927
20-49 .....	1 592	1 616	1 646	1 635	1 588	1 527	1 495	1 508	1 540	1 579
50-99 .....	660	633	619	637	610	563	595	573	605	645
100-199 .....	365	369	355	340	339	338	285	298	299	311
200 and more .....	236	231	217	199	198	191	189	177	189	195



# Industristatistikk

## Strukturstatistikk



Skjematype I2



Du kan òg svare på Internett: <https://idun.ssb.no>

**Brukar-ID:**

**Passord:**



Hjelp til utfylling:



Opplysningane nedanfor er den informasjonen SSB har om kontaktpersonen i verksemda. **Er opplysningane feil eller mangelfulle, ver vennleg og oppdater i felta til høgre:**

Namn:

E-post:

Tlf.nr.:




Skjemaet skal fyllast ut for verksemda nedanfor. **Er opplysningane feil eller mangelfulle, ver vennleg og oppdater i felta til høgre:**

Namn:

Gateadresse:

Postnummer/  
stad:

Postadresse:

Postnummer/  
stad:

Næring:

Er næringa feil eller endra, beskriv verksemda her:



**Er verksemda ... Set eitt kryss:**

i vanleg drift? → **Gå til 1**

under oppbygging? → **Gå til 1**

registrert berre for å verne  
firmanamn, varemerke eller liknande? → **Gå til 6**

ute av drift? → **Frå kva dato?**

dd	mm	åå
<input type="text"/>	<input type="text"/>	<input type="text"/>

→ **Gå til 6**

seld/overdregte? → **Frå kva dato?**

<input type="text"/>	<input type="text"/>	<input type="text"/>
----------------------	----------------------	----------------------

→ **Gå til D**



**Fyll inn det nye føretaket  
sitt ...**

... organisasjonsnummer

... namn

<input type="text"/>	<input type="text"/>
----------------------	----------------------

→ **Avslutt**



**1 Produksjonsinntekter (medrekna interne leveransar) fordelte på:**

i 1 000 kroner

210	Sal av eigenproduserte varer .....	
220	Sal av handelsvarer .....	
230	Reparasjonsarbeid.....	
240	Leigearbeid.....	
250	Andre salsinntekter.....	
260	Øvrige driftsinntekter (leige- og provisjonsinntekter, uopptent inntekt og anna driftsrelatert inntekt) .....	
<b>290</b>	<b>Produksjonsinntekter i alt</b> (unnateke subsidiar, vinst ved avgang anleggsmiddel og verdiendringar) .....	
295	Av dette: Inntekter fra interne leveransar til andre bedrifter i foretaket .....	

**2 Produksjonskostnader (medrekna interne leveransar) fordelte på:**

i 1 000 kroner

310	Råvarer, halvfabrikata, hjelpestoffer og emballasje .....	
314	Kostnader knytte til selde handelsvarer.....	
316	Leigearbeid (framandytingar og underentreprise).....	
320	Energiforbruk .....	
330	Frakt og spedisjon vedrørande salet .....	
340	Lønn, feriepengar, honorar mv. ....	
350	Arbeidsgivaravgift.....	
360	Reparasjon og vedlikehald .....	
370	Leigekostnader (fast eigedom og driftsmiddel) .....	
380	Forbruk av andre varer og tenester (sjå rettleiing, unnateke lagerendringar, av- og nedskrivningar, tap på fordringar og tap avgang anleggsm.).....	
<b>390</b>	<b>Produksjonskostnader i alt</b> .....	
395	Av dette: Kostnader for interne leveransar frå andre bedrifter i føretaket .....	

**3 Lager**

31.12.  
i 1 000 kroner

01.01.  
i 1 000 kroner

420	Lager av varer under tilverknad og prosjekter i arbeid .....		
430	Lager av eigentilverka ferdigvarer .....		

**4 Investeringar og reparasjonar**

	Innkjøp i 1 000 kroner	Sal (til salspris) i 1 000 kroner	Vedlikehold/Reparasjonar i 1 000 kroner
520 Bygningar og anlegg .....			
530 Tomter og andre grunnareal....			
540 Bustader medrekna bustad- tomter.....			
550 Skip, riggar, fly mv. ....			
560 Varebilar mv.....			
570 Kontormaskinar .....			
580 Personbilar, maskiner, inven- tar og andre driftsmiddel.....			
<b>590 Investeringar og reparasjo- nar i alt .....</b>			

**5 Utgifter til datautstyr og programvare.** Gi opp totale utgifter (kostnadsførte og balanseførte) og kor mykje som er aktivert, dvs. balanseført som investering. Utgifter til utstyr som blei kjøpt inn og seld vidare utan vidarefor- edling, er handelsvarer og skal ikkje takast med.

	Totale utgifter i 1 000 kroner	Av dette aktivert i 1 000 kroner
601 Innkjøp av datamaskiner og tilhøyrande utstyr .....		
602 Innkjøpt programvare som ikkje er med i post 601 Innkjøp av datamaskiner og tilhøyrande utstyr..		
603 Eigenutvikla programvare til eige bruk.....		

**6 Kommenterar/merknader:**

Empty text box for comments.

**Hugs!** Send med kopi av Næringsoppgåve 1 eller 2 og skjemaet Avstemming av eigenkapital dersom desse ikkje blir leverte elektronisk.

**Takk for innsatsen!**